

Financial Results - Year End 2007



*C. Ashley Heppenstall, President & CEO
Geoffrey Turbott, Vice President Finance & CFO*

Disclaimer

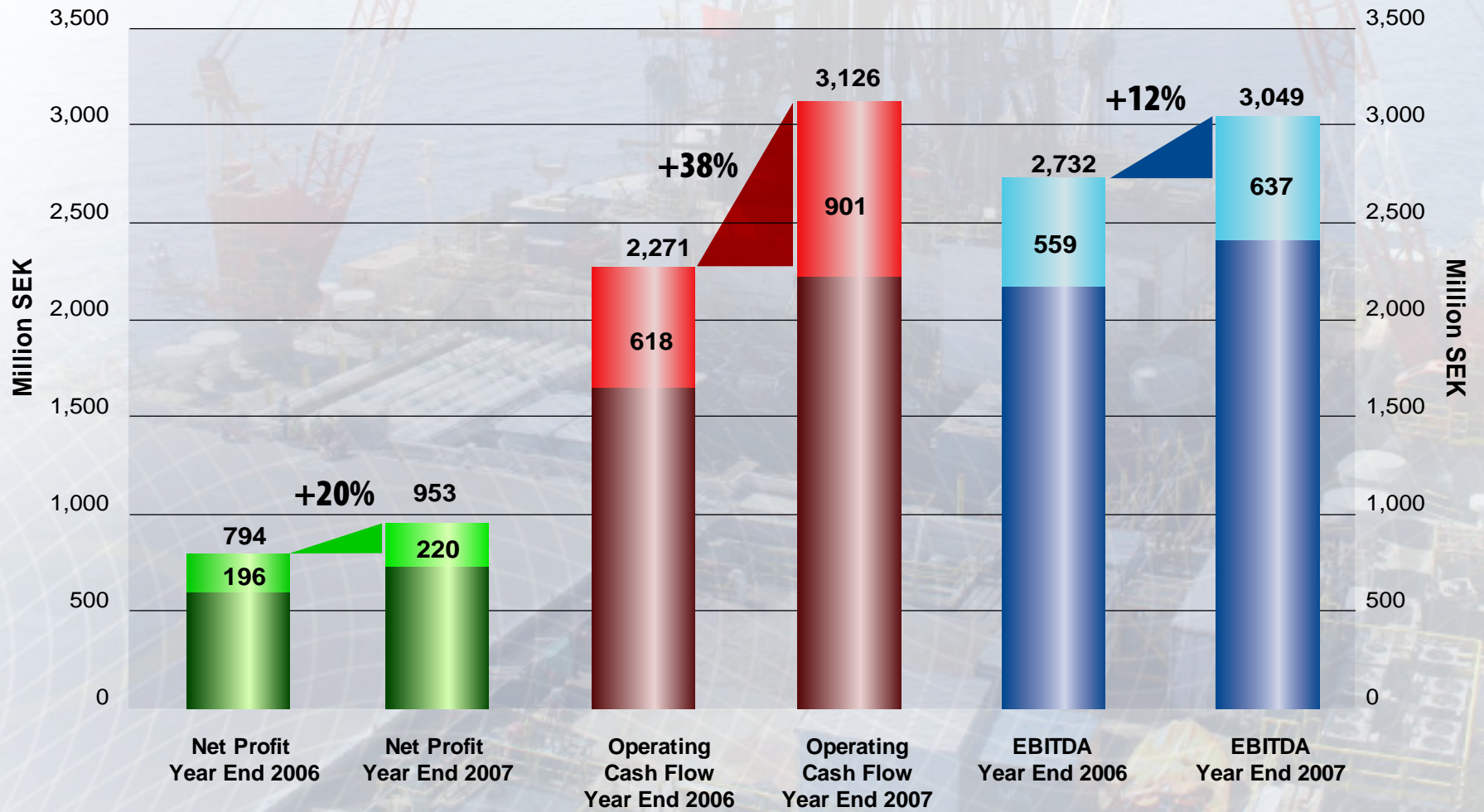


DISCLAIMER

Certain statements made in this presentation involve a number of risks and uncertainties that could cause actual results to differ materially from those projected. Certain statements relating to Lundin Petroleum's business and operations are based on management's expectations, estimates and projections. These statements are not guarantees of future performance and involve risks, uncertainties and assumptions that are difficult to predict. Certain statements are based upon assumptions as to future events that may not prove to be accurate. Therefore, actual outcomes and results may differ materially from what is expressed or forecasted in such statements. Lundin Petroleum makes no commitment, and disclaims any duty, to update or revise any of these statements.

This presentation is for informational purposes only and is not intended as a solicitation or offering of securities in any jurisdiction. The information contained in this presentation is not intended to qualify, supplement or amend information disclosed under corporate and securities legislation of any jurisdiction applicable to Lundin Petroleum and should not be relied upon for the purpose of making investment decisions concerning any securities of Lundin Petroleum.

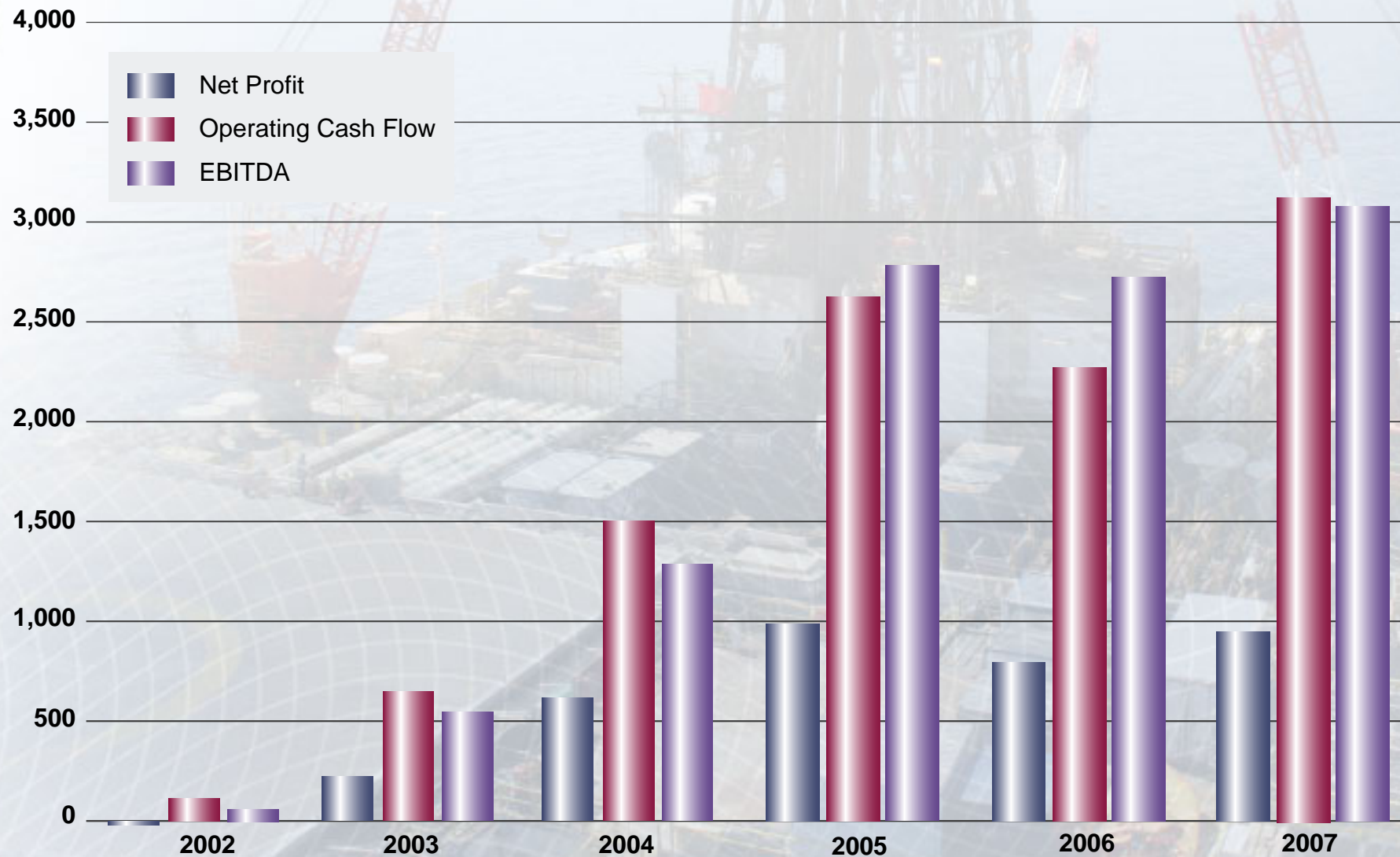
Financial Results - Year End 2007



Financial Performance



Million SEK



Financial Performance - Year End 2007



- **Production 2007** **34,000 BOEPD**
- **Cost of operations 2007** **USD 18.28/bbl**
- **G&A Cost 2007** **172 MSEK**

➤ 2007 effective rate of tax	47%
➤ Current tax charge	1.07 USD/boe
➤ Deferred tax charge	8.97 USD/boe

Includes UK Corporation tax refund for prior periods 7.0 MUSD

2007 Exploration Write-Offs



	2007 Actual MUSD	2007 Actual MSEK
UK including wells 9/10c, 14/28a, 41/10a, Banchory	25.5	172.4
Indonesia including Banyumas, Blora	12.0	80.7
Norway well PL335	8.8	59.3
Albania	4.6	31.2
Other	3.9	26.0
2007 exploration write-offs	54.8	369.6

Note: UK 12/17b-1 Ridgewood well to be written off in Q1 2008 (approx. 50 MSEK)

2007 Margin Netback [USD/boe]



	CMD Jan 07 excl. Alvheim	CMD Jan 08 forecast 2007	Actual 2007
<i>oil price</i>	55.00	72.65	72.39
Production (mmboe)	13.30	12.66	12.66
Revenue	48.35	64.25	64.15
Cost of operations	-16.30	-18.40	-18.28
Tariffs	-1.65	-2.30	-2.29
Production taxes	-3.65	-4.35	-4.50
Stock movements	-0.30	-1.50	-1.44
	26.45	37.70	37.64
Depletion	-10.95	-11.85	-11.67
Write-offs	0.00	-4.40	-4.33
Margin Netback	15.50	21.45	21.64

2007 Cost of Operations



	MMBOE		USD/boe		MUSD
➔ Capital Market Day 2007 excl. Alvheim	13.3	X	16.30	=	217.3
➔ Capital Market Day 2008	12.7	X	18.40	=	232.9
➔ Actual 2007	12.7	X	18.28	=	231.5
➔ % Change to CMD 2007 excl. Alvheim	-5.1%		12.2%		6.6%*

**Foreign exchange = 4.6% => Actual cost increase = 2.0%*

Balance Sheet



	31 Dec 2007 MSEK	31 Dec 2006 MSEK
➤ Fixed Assets	19,026	16,188
➤ Net Current Assets (excluding cash)	-180	3
➤ Net Bank Debt	2,302	1,134
➤ Shareholder Equity	9,706	8,953
➤ Net Debt/Equity Ratio	24%	13%

- **New Finance Facility of \$1bn**
 - ➔ \$850 million secured revolving reducing credit facility
 - ➔ \$150 million unsecured credit facility

- **Facility was underwritten by**
 - ➔ BNP Paribas
 - ➔ Royal Bank of Scotland
 - ➔ Bank of Scotland

- **Facility Fully Syndicated**

Operational Highlights 2007



- ➔ **Production 34,000 boepd - in line with forecast**
- ➔ **2P Reserves up from 176 mmboe to 184 mmboe – reserves replacement ratio of 148%**
- ➔ **Contingent Resources up from 133 mmboe to 188 mmboe**
 - ➔ Luno Discovery in Norway
 - ➔ Scolty Discovery in United Kingdom
- ➔ **Prospective Resources (prospects only) up from 2.7 bn boe to 3.1 bn boe**
 - ➔ Norway - APA2006 Round very successful
 - ➔ Russia – Petrovskaya lead matured to prospect
 - ➔ Sudan – 2D seismic programme increased prospective resources
- ➔ **Added 28 licences through licence awards and farm-ins**

An Excellent Start to 2008



- ➔ **Alvheim**
 - ➔ Sail away from Haugesund on 15 February
 - ➔ First oil by end first quarter 2008

- ➔ **Nemo - successful appraisal well in PL148 offshore Norway**

- ➔ **Exploration drilling commenced in Block 5B Sudan in February**

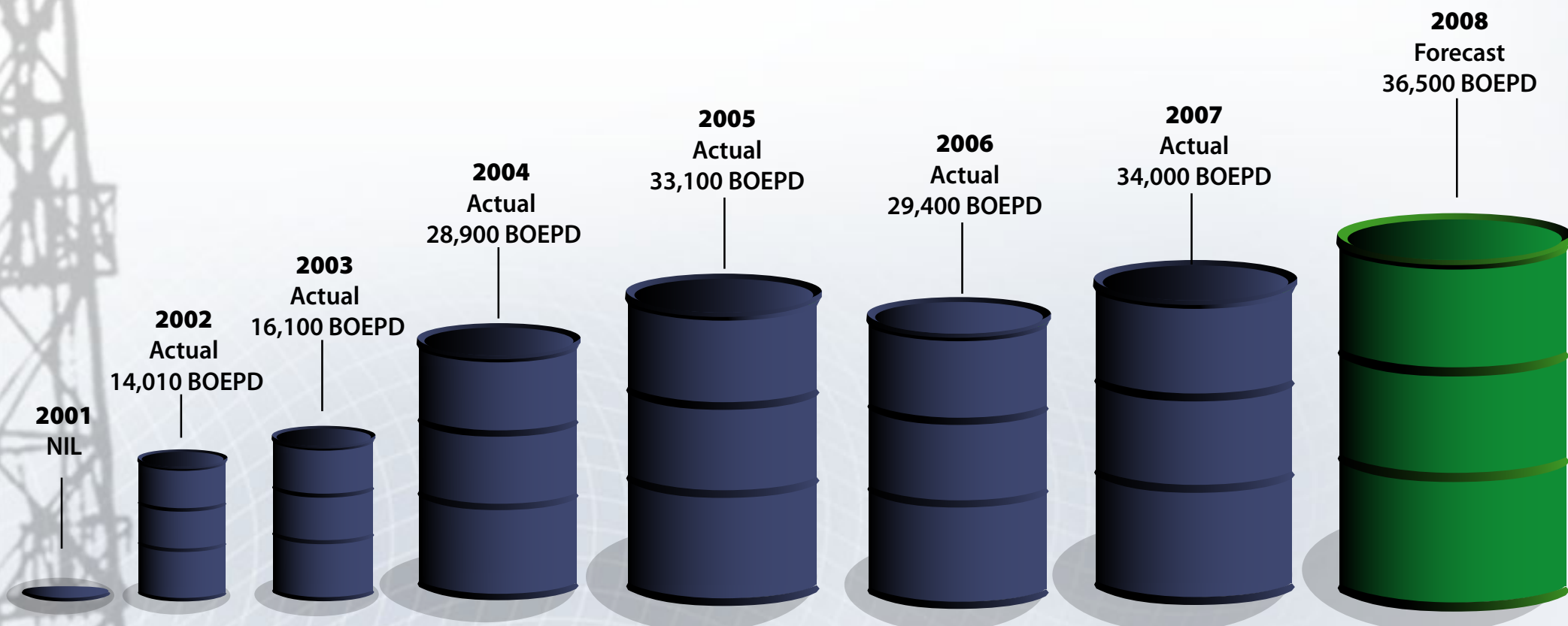
- ➔ **Receipt of drilling permit for Lagansky block in Russian Caspian**

- ➔ **Seven new licences awarded in Norwegian 2007 APA**

Production History



Compounded annual growth rate 2002-2007 is 19%



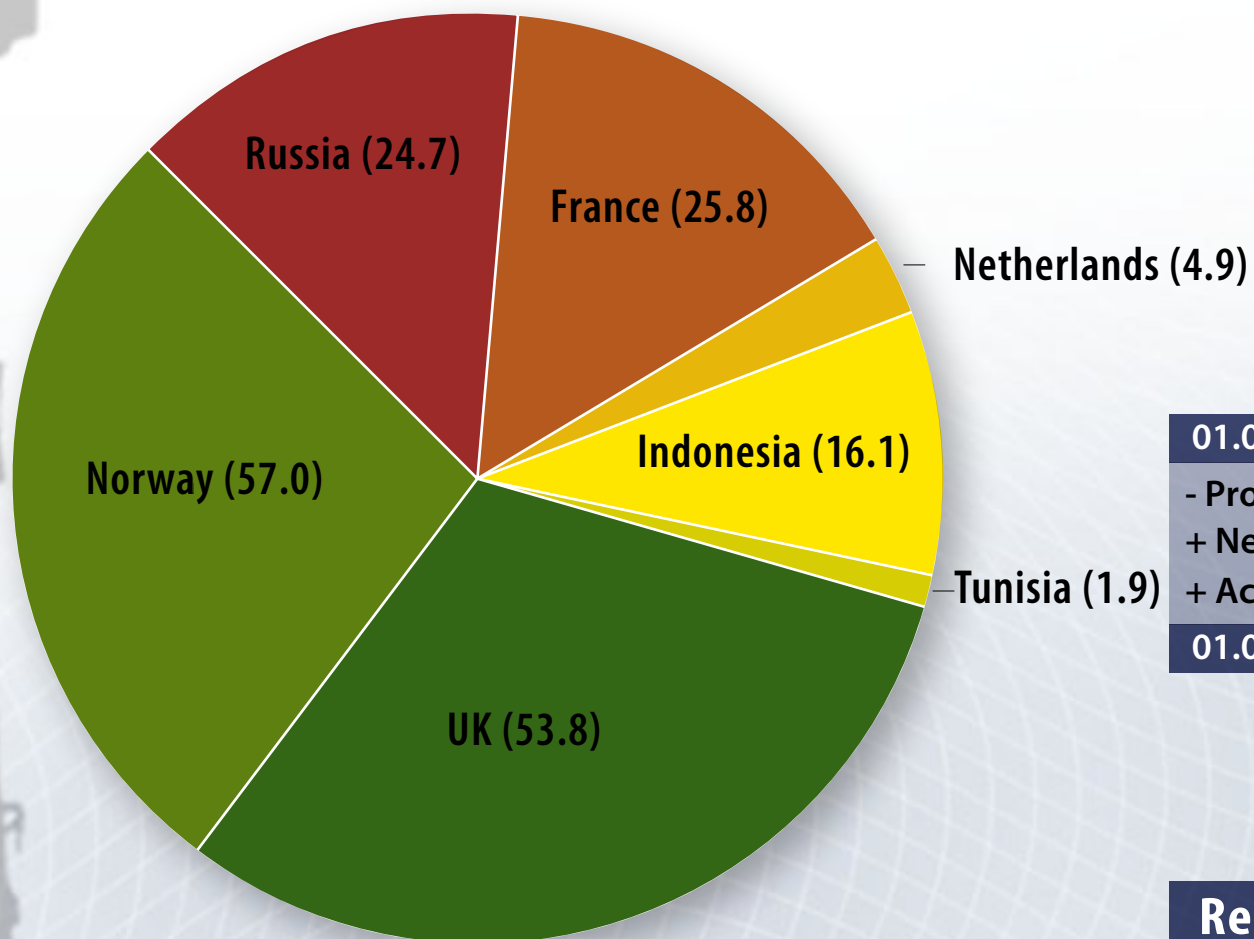
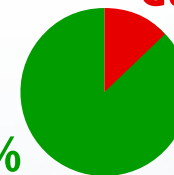
2008 Proven & Probable Reserves



Total 184.2 MMboe

Gas 14.7%

Oil 85.3%

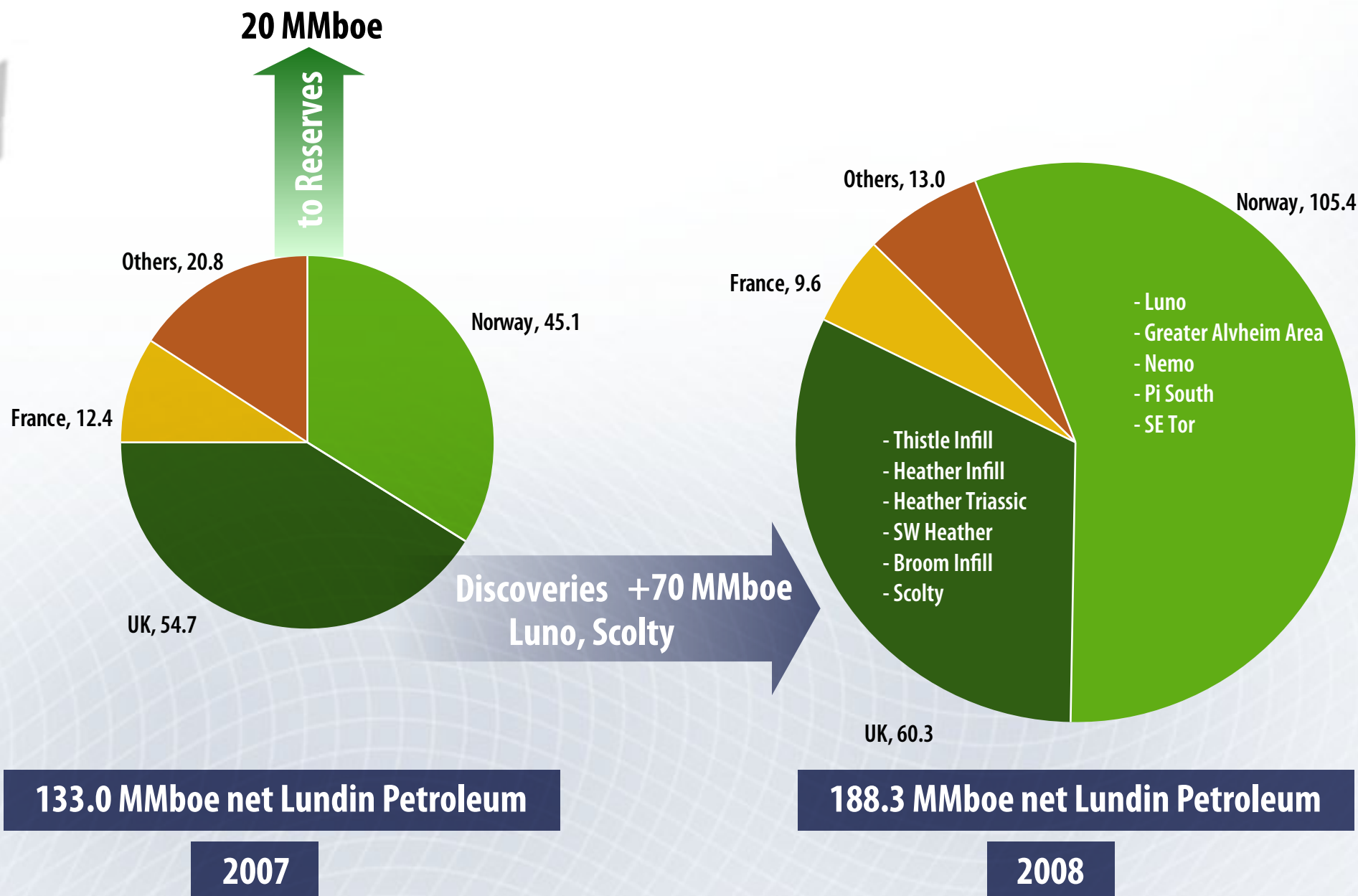


	mmboe
01.01.2007	176.4
- Produced (forecast)	-12.4
+ New reserves	18.4
+ Acquisitions	1.8
01.01.2008	184.2

Increase in Reserves 12%

Reserves Replacement Ratio 148%

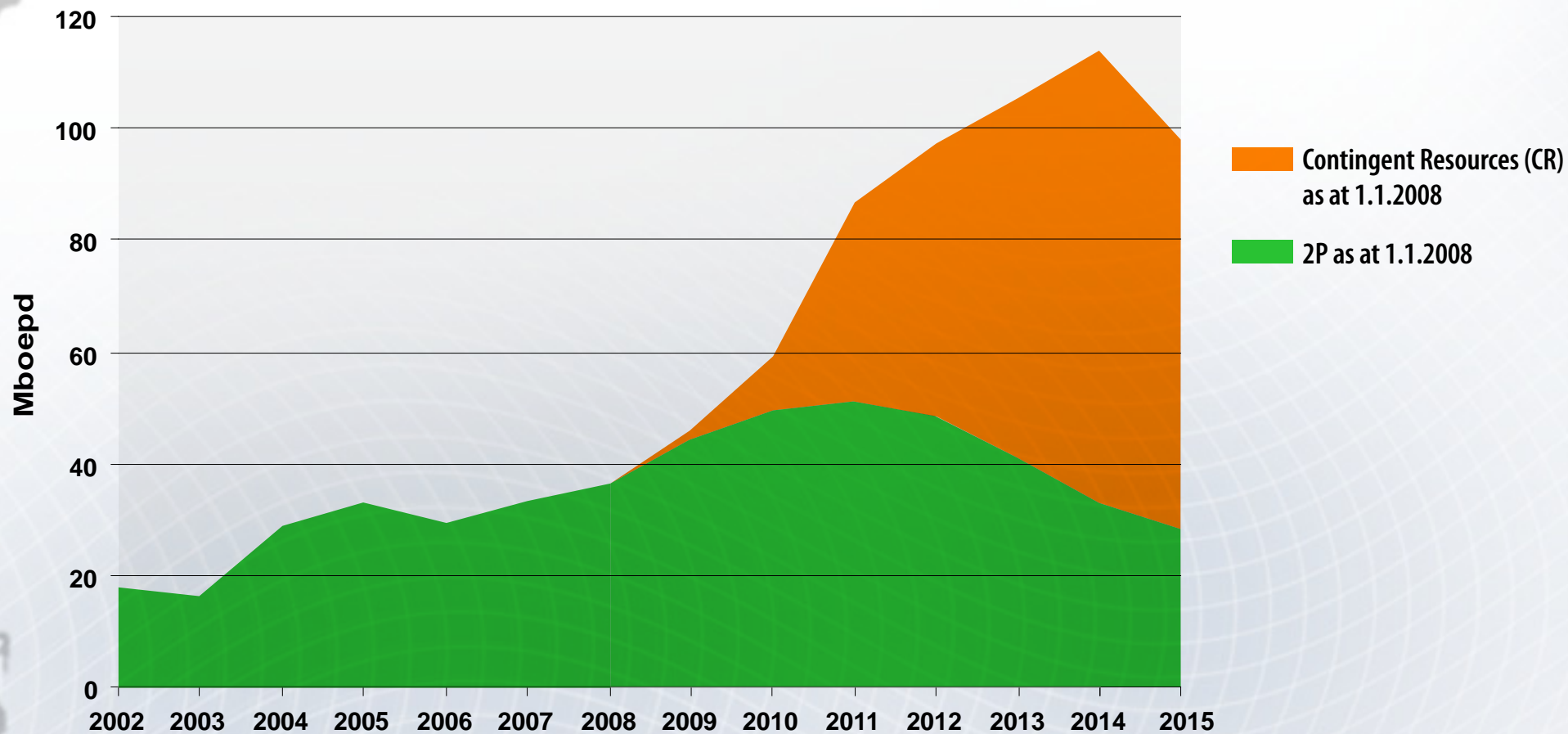
Contingent Resources - Existing Discoveries



Production Profile based upon 2008 Resource Position



➤ Existing resources have the potential to triple existing production



- excludes any exploration success or acquisitions
- Nemo and Luno included in contingent resources

2008 Development Expenditure Budget USD 375 million

Lundin

DEVELOPMENT

- **Norway**
 - ➔ **Alvheim Field** onstream 2008
 - ➔ **Volund Field** onstream 2009

- **UK**
 - ➔ **Broom Field** infill drilling
 - ➔ **Thistle Field** redevelopment including rig reactivation

- **Indonesia**
 - ➔ **Singa Field** onstream 2009

Alvheim - First Oil Approaching



- **Alvheim - working interest 15%**
- **First production end first quarter 2008**
- **Development drilling - 6 production wells completed**
- **Subsea installation completed**
- **Sail away from Haugesund 15 February. FPSO complete**
- **Plateau production >90,000 gross in 2008**
- **Reserves 215 MMboe gross (increase of 14% in 2007)**

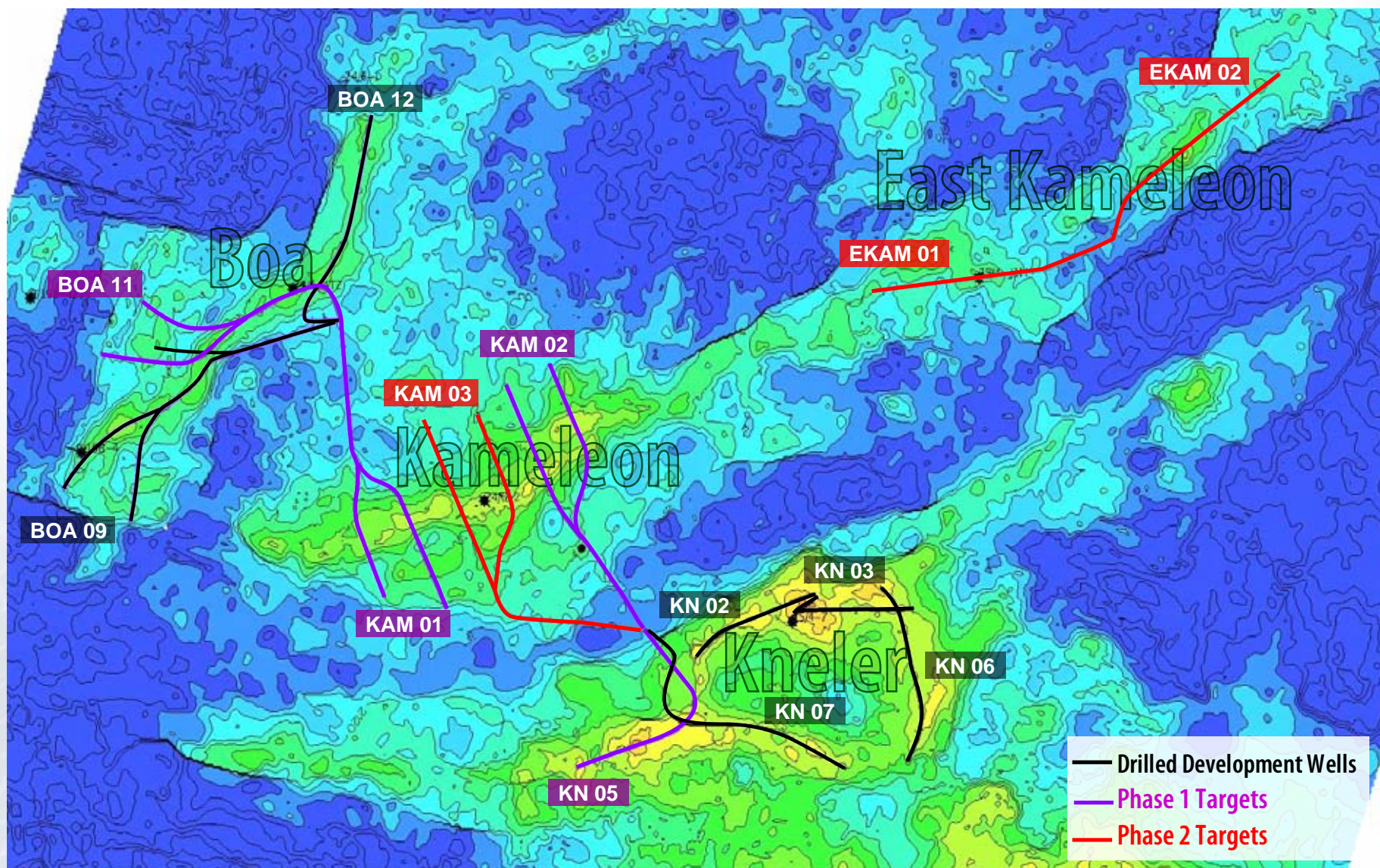


Alvheim FPSO sail away from Haugesund

2008 Projects - Norway Alvheim



- 80 km of well bore
 - 12.3 km of horizontal section
- } Completed



2008 Exploration Expenditure Budget USD 350 million



EXPLORATION

17 exploration wells and 3 appraisal wells targetting 1.2 billion* barrels of unrisksed exploration potential

	Firm Wells		
	Exploration	Appraisal	
➔ UK	1		➔ P1107 - Torphins
➔ Norway	2	3	➔ PL 292 ; PL 304 ; PL338 Luno Appraisal PL 006 SE Tor Appraisal, PL148 Nemo Appraisal
➔ France	1		➔ Paris Basin
➔ Russia	2		➔ Lagansky Block - Morskaya, Laganskaya
➔ Sudan	4		➔ Block 5B - Umm Dandalo ; Barada ; Kasafa ; Nyal
➔ Congo	1		➔ Marine XI
➔ Vietnam	1		➔ Block 06/94
➔ Indonesia	5		

➔ *PL148 Nemo already drilled - Proved field extension*

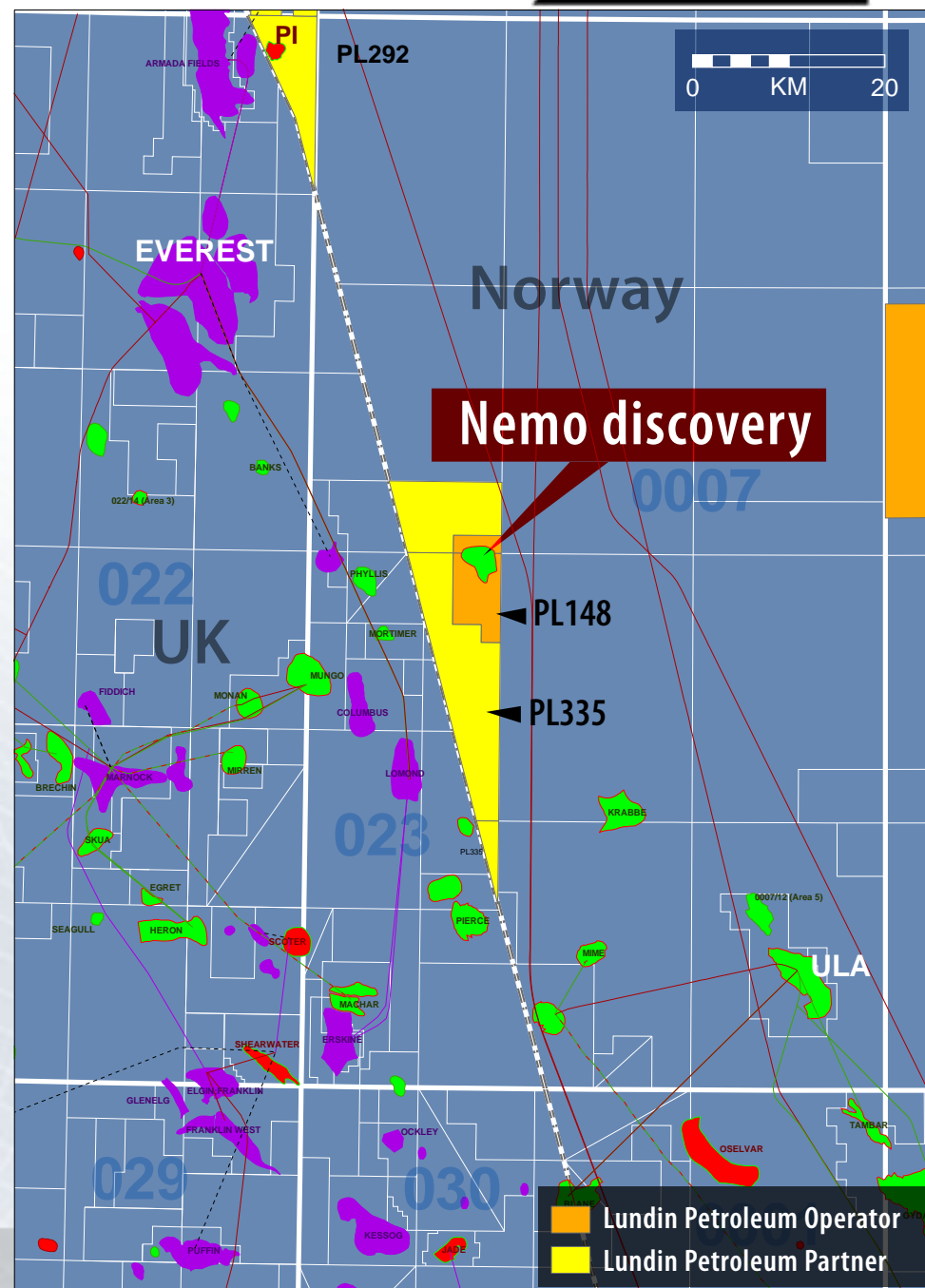
* *Excludes Congo and Vietnam*

Southern North Sea - PL148

- ➔ **Lundin Petroleum interest: 50% (operator)**
 - ➔ Noreco 20 %, Talisman 30%
- ➔ **Recent appraisal well confirmed field extension**
- ➔ **Existing infrastructure nearby in UK and Norway**
- ➔ **Likely FDP in 2008**
- ➔ **Likely to move to 2P reserves in 2008**
- ➔ **Gross Contingent Resources**

Field	MMBOE
Nemo (range)	20 - 30*

* Current contingent resources 20.6 MMboe



UK / Norwegian Undeveloped Discoveries*

* Excludes infill drilling within existing fields

- **PL338**
Luno

 - ➔ 50% interest (operator)
 - ➔ gross resources: 65-190 mmboe
 - ➔ appraisal drilling in 2008
- **PL006c:**
South East Tor

 - ➔ 75% interest (operator)
 - ➔ gross resources: 22.5 mmboe
 - ➔ appraisal drilling in 2008
- **PL148 7/7-2:**
Nemo

 - ➔ 50% interest (operator)
 - ➔ successfully appraised by well 7/4-2
 - ➔ gross resources: 20-30 mmboe
- **PL292:**
Pi South

 - ➔ 40% interest
 - ➔ gross resources: 10.9 mmboe
 - ➔ Pi North prospect drilling in Q1 2008
- **PL340**

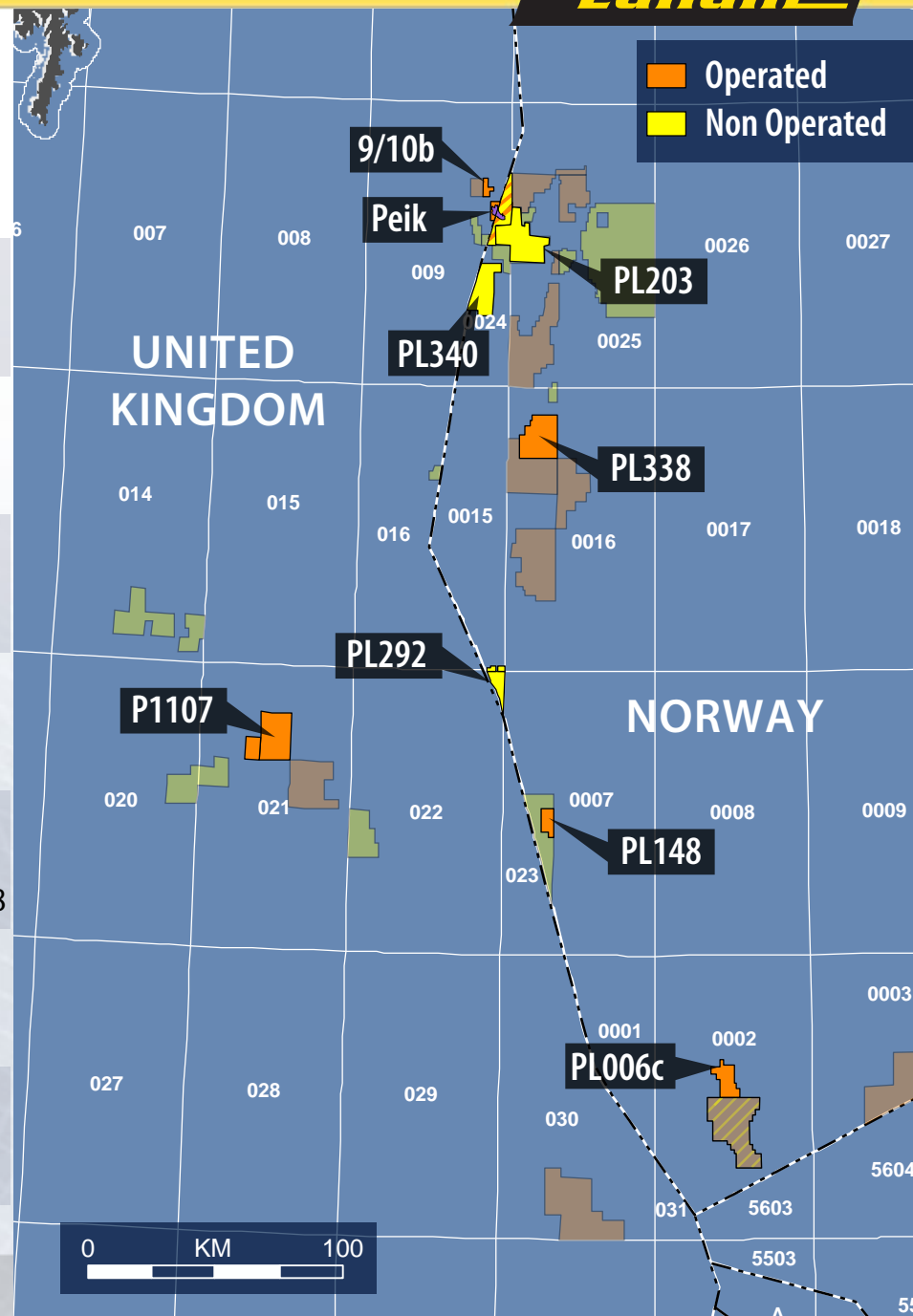
 - ➔ 15% interest
 - ➔ gross resources: 11.0 mmboe
 - ➔ drilling Marihone prospect in 2009
- **P1107:**
Scolty

 - ➔ 40% interest (operator)
 - ➔ gross resources: ~10 mmboe
 - ➔ drilling amplitude anomaly prospect (Torphins) in 2008
- **PL203**
Gekko/Kobra

 - ➔ 15% interest
 - ➔ gross resources: ~36.6 mmboe
- **P090 (9/10b)**
9/10b discovery

 - ➔ 85% interest
 - ➔ gross resources: ~11.9 mmboe

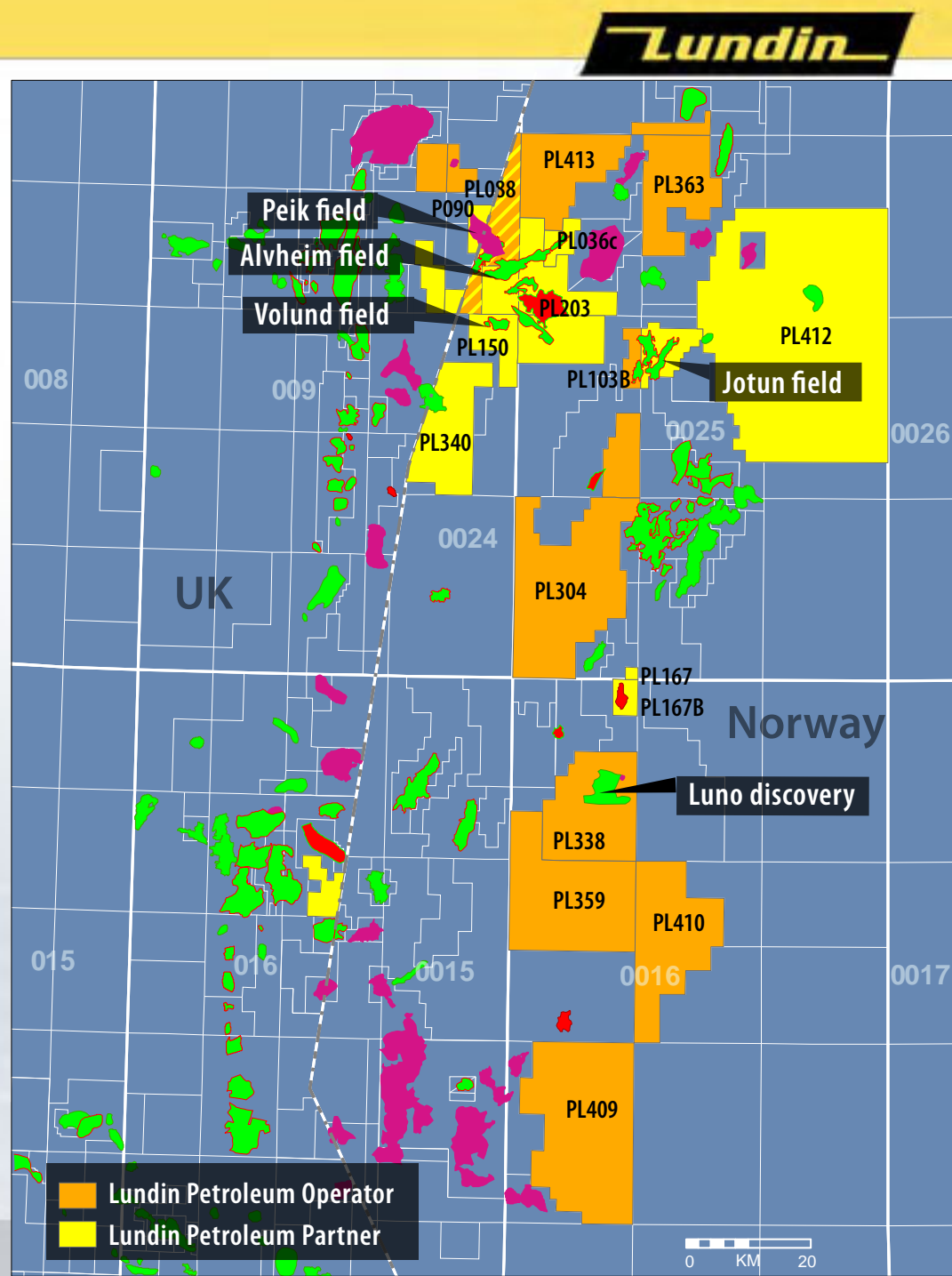
Net Contingent Resources: ~ 120 MMboe



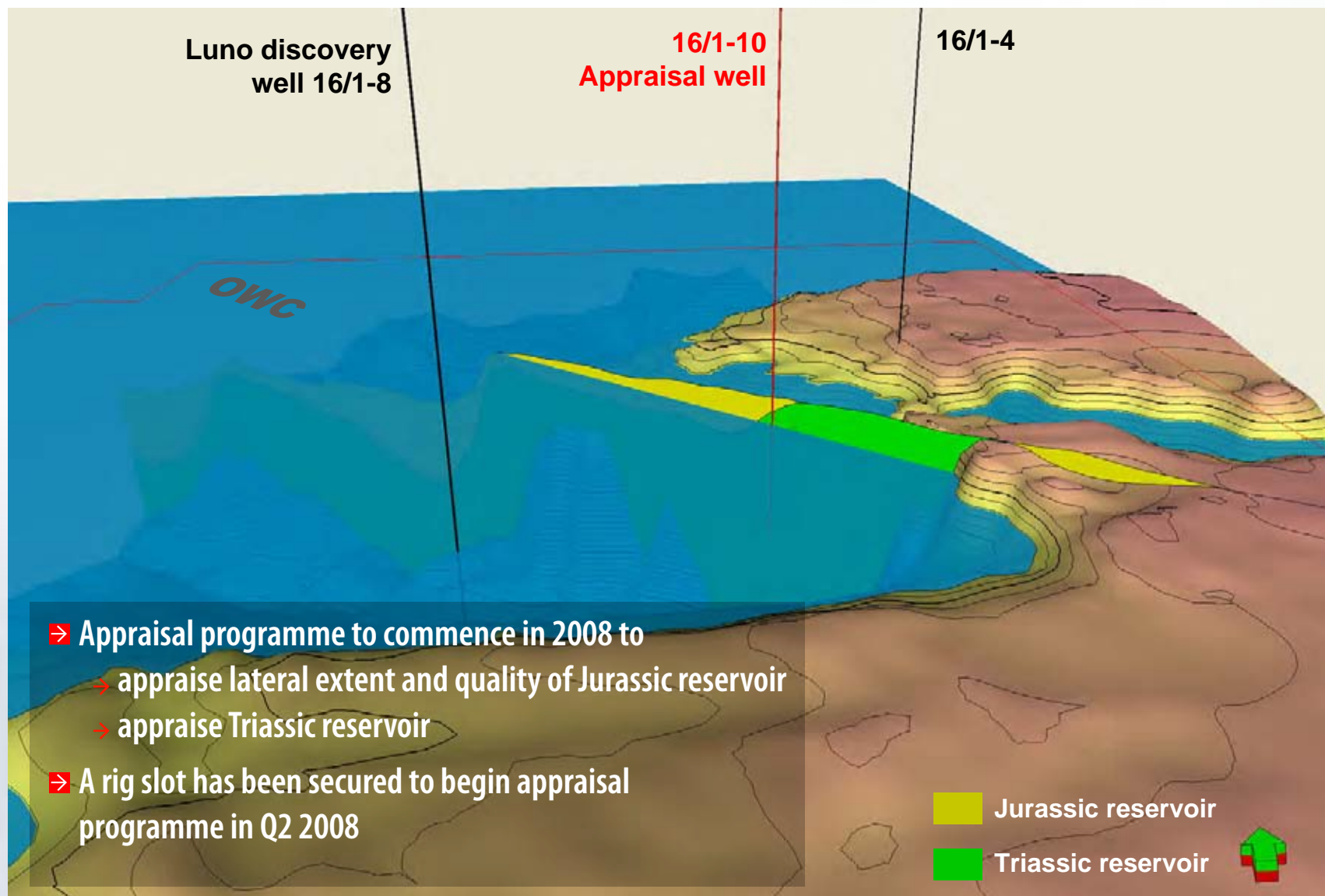
Luno Discovery - PL338

- **Discovered in 2007**
- **Lundin Petroleum interest: 50% (Operator)**
 - ➔ **Revus 30%, RWE 20%**
- **Discovery 16/1-8**
 - ➔ **Light oil in Jurassic reservoir**
 - ➔ **Upside in Triassic**
 - ➔ **Largest discovery in Norwegian North Sea in the last decade**
 - ➔ **New play concept proven**
 - ➔ **Significant working interest in adjoining acreage**
- **Contingent Gross Resources**

Discovery	MMBOE
Luno Jurassic (mean)	133
Luno Jurassic upside	57
Luno Triassic upside	?



Luno Discovery Appraisal Drilling 2008

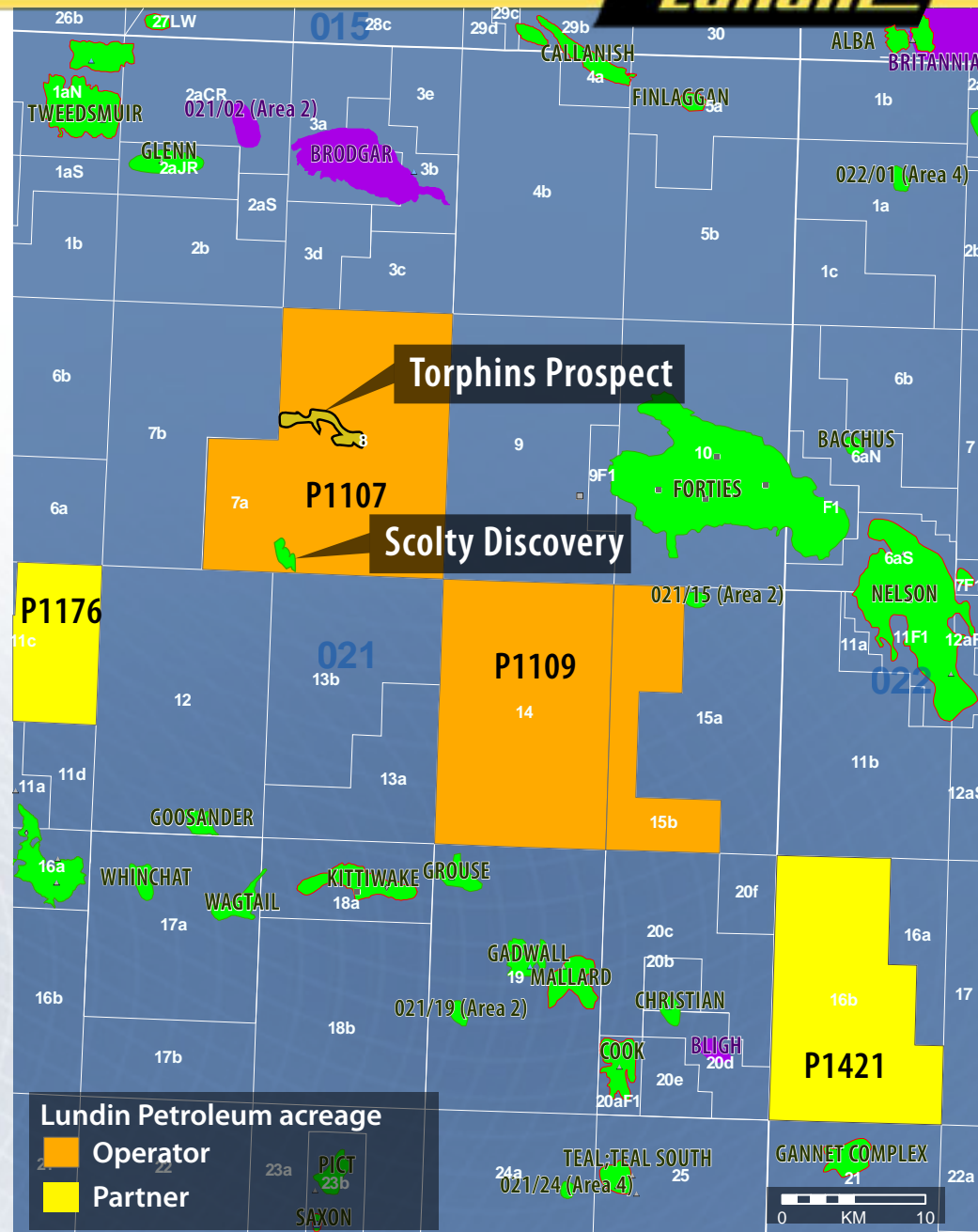
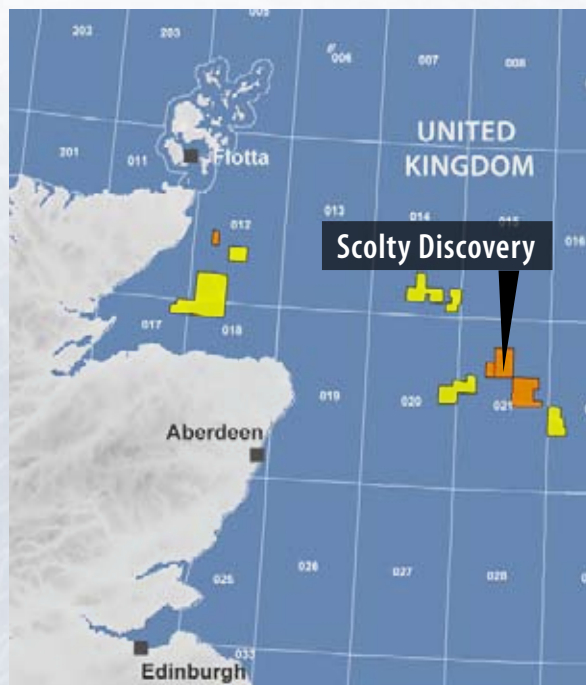


2007 UK Exploration Success - Scolty Discovery (P1107)

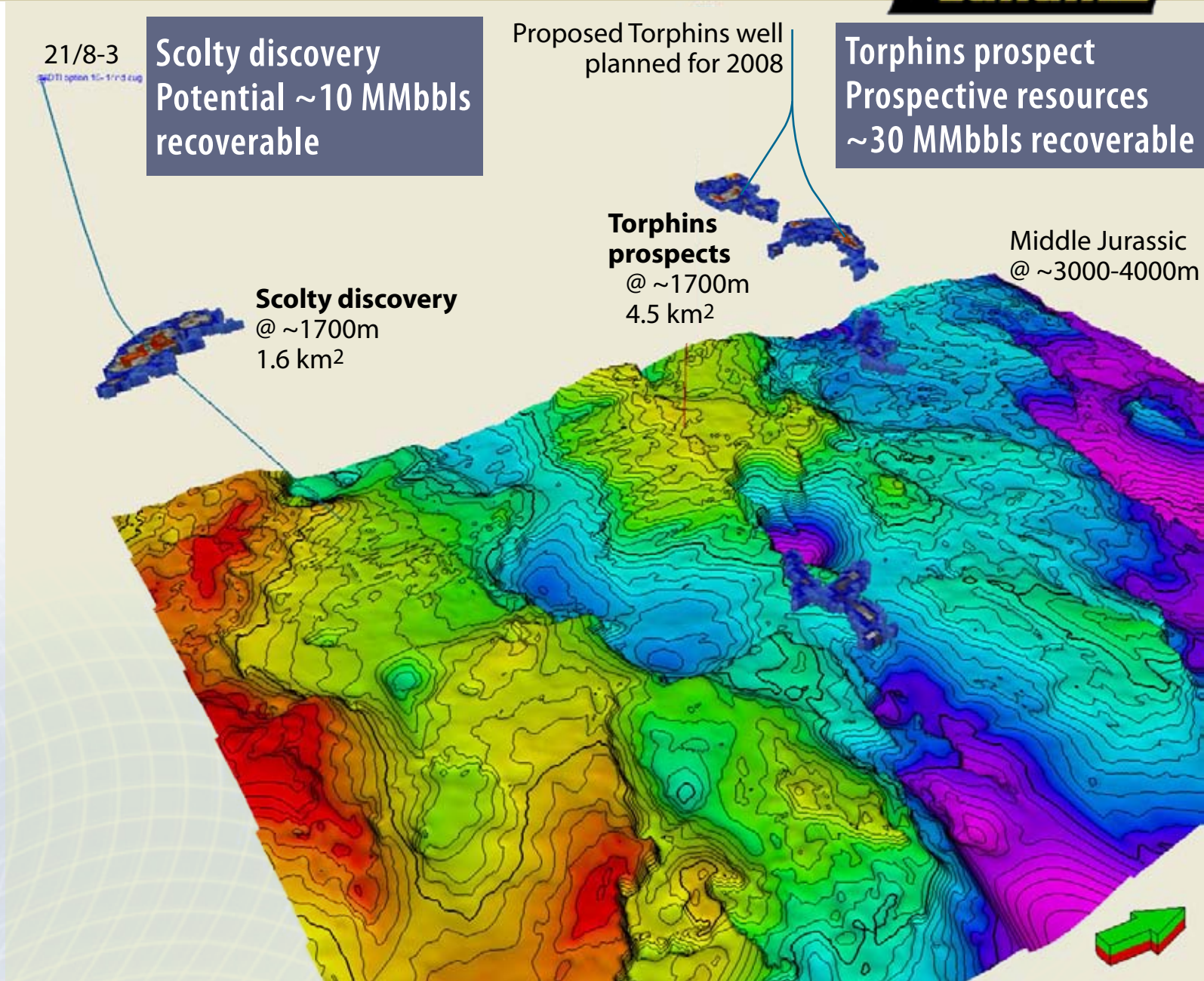


- ➔ **Lundin Petroleum interest: 40% (operator)**
 - ➔ Palace Exploration (Revus) 50 %
 - ➔ Challenger Minerals 10%

- ➔ **Drill Torphins in Q2 2008**



2007 UK Exploration Success - Scolty Discovery [P1107]



Lundin Petroleum Awarded Licences APA 2007



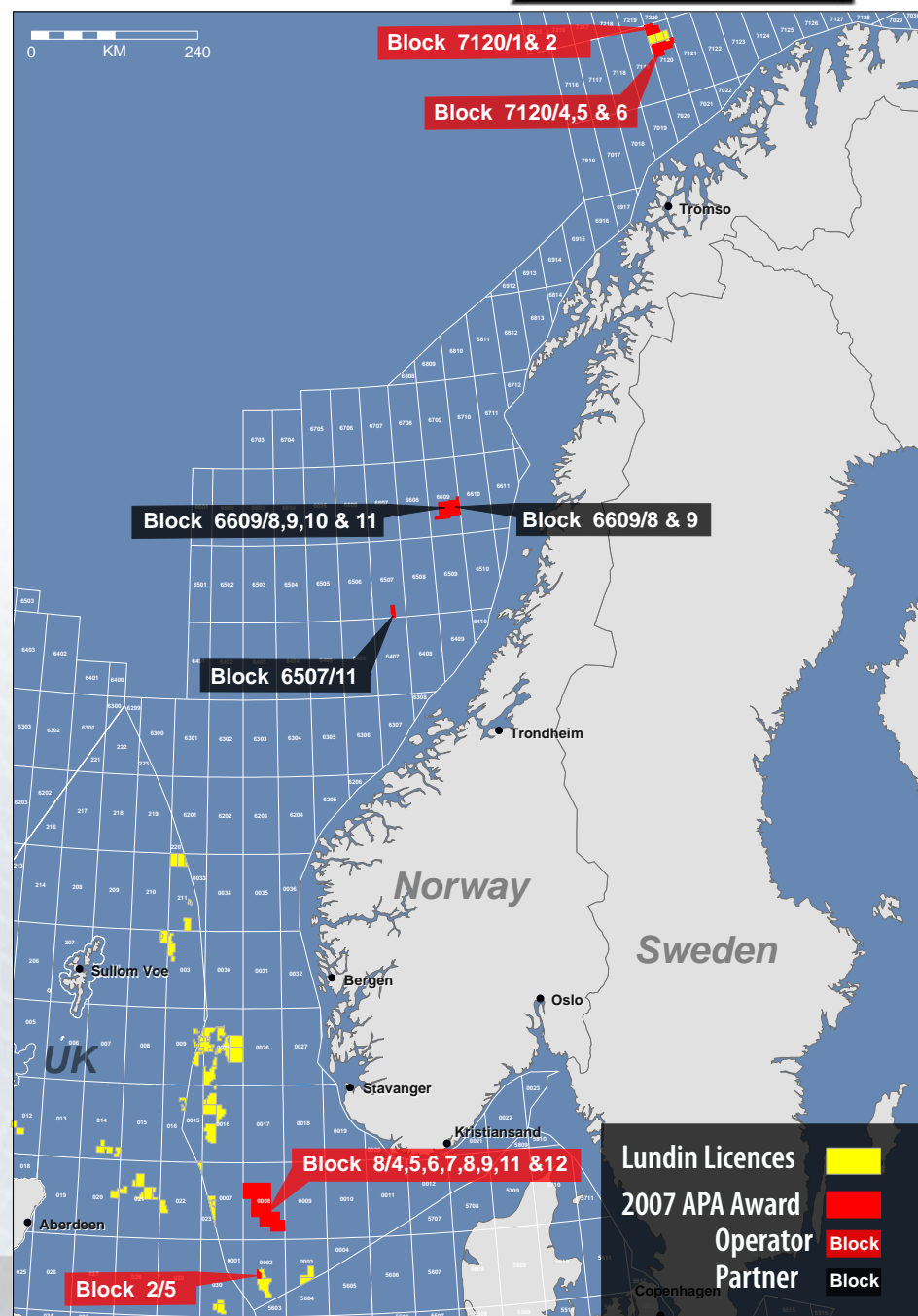
- ➔ Lundin Petroleum awarded 7 new licences in Norwegian licensing round

Licence

Lundin Petroleum licence interest

- ➔ Block 2/5 75%*
- ➔ Block 8/4, 5, 7, 8, 9, 11 & 12
(blocks 8/8 & 8/11:200m below base jurassic and younger) 30%*
- ➔ Block 6507/11 30%
- ➔ Block 6609/8 & 9
(all formations below base cretaceous) 20%
- ➔ Block 6609/8, 9, 10 & 11 30%
- ➔ Block 7120/1 & 2 40%*
- ➔ Block 7120/ 4, 5 & 6 40%*
- ➔ Total licences in Norway - 31 including 7 awarded in 2007 APA

*operator Lundin Petroleum



Russia - Lagansky Block

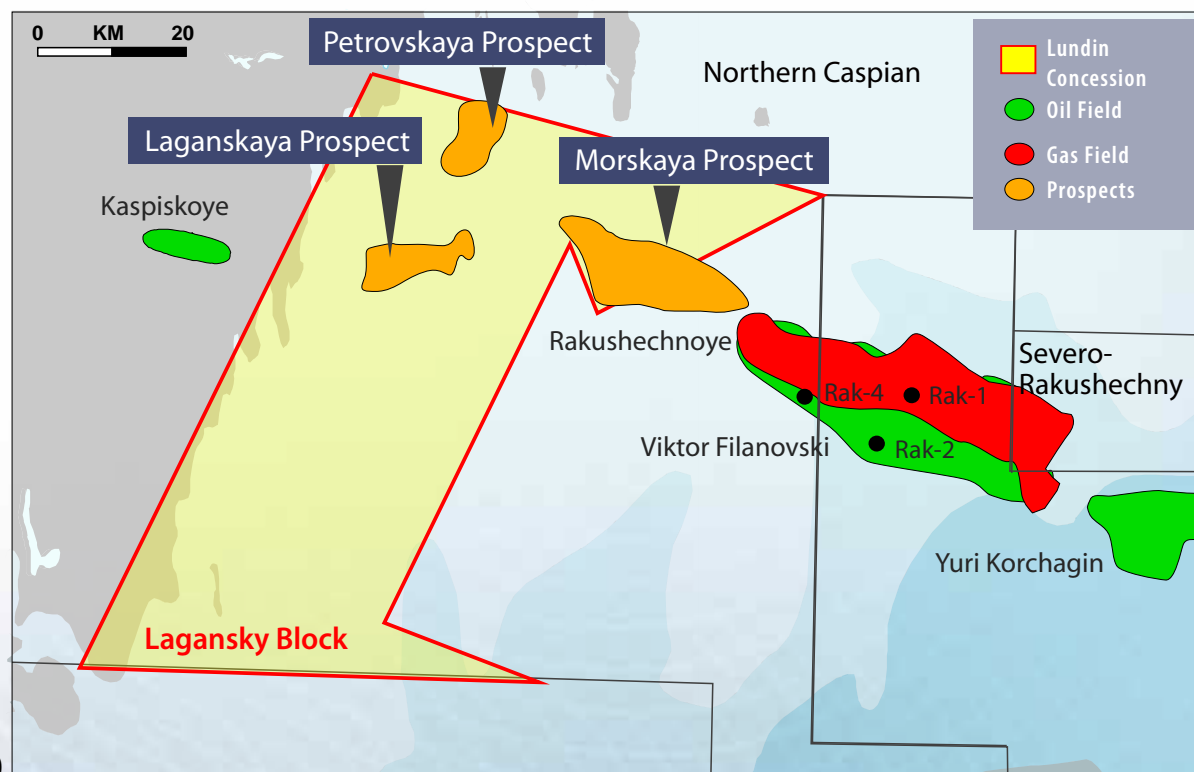


- **Lundin Petroleum: 70% (operator)**
 - ➔ **Mintley Kalmykia 30%**
- **Gazprom option to acquire 50% working interest**
- **Lundin Petroleum option to acquire 30% interest.**
- **Work Commitment**
 - ➔ **4 well commitment**
 - 2 wells to be drilled by end 2008
 - 2 wells to be drilled by August 2009

➤ Prospective Resources

Prospect	*MMBOE	COS %
Morskaya	641	35
Laganskaya	106	26
Petrovskaya	300	34

**Gross Unrisked Prospective Resources on block*



Russia Lagansky Exploration - Drilling Status



➤ Permitting

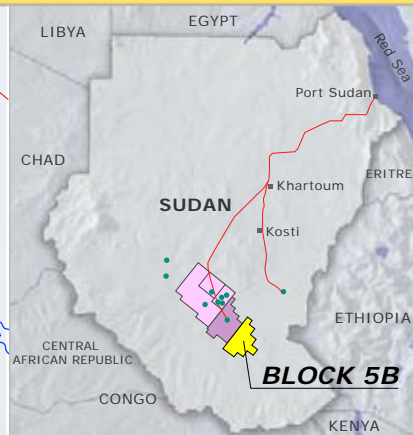
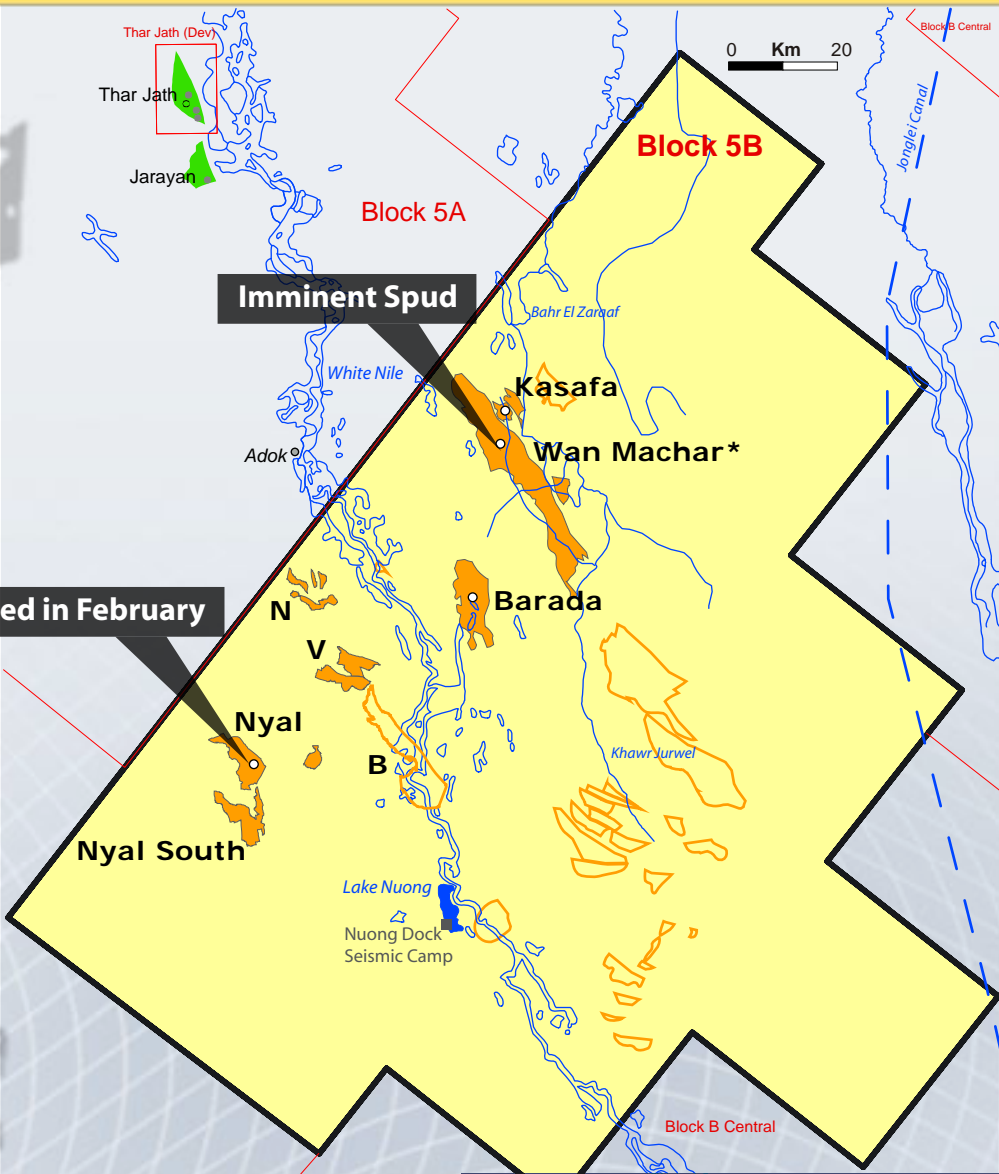
- ➔ Licence amendments approved by Rosnedra
- ➔ Drilling permit from Rosprirodnadzor secured

➤ Operationally ready to commence drilling

- ➔ Mobilisation to well location beginning second quarter

➤ First well to be drilled in second quarter 2008

Sudan - Block 5B



- ➔ Prolific Muglad Basin petroleum system
- ➔ Over 1,280 km of seismic acquired since 2006
- ➔ Four well exploration programme began in 1Q 2008

Current Partners 5B interest

Current Partners	5B interest	
Lundin Petroleum	24.5%	} Joint operators (WNPOC)
Petronas Carigali	39.1%	
Sudapet	13.7%	
ONGC Videsh Ltd	23.5%	

NilePet likely to take 10% interest in block

Net unrisks resource from targeted prospects > 500 million boe

Nyal - Drill Site



Nyal drilling site



Nyal structure over satellite image

Gross prospective resources - 176 MMboe

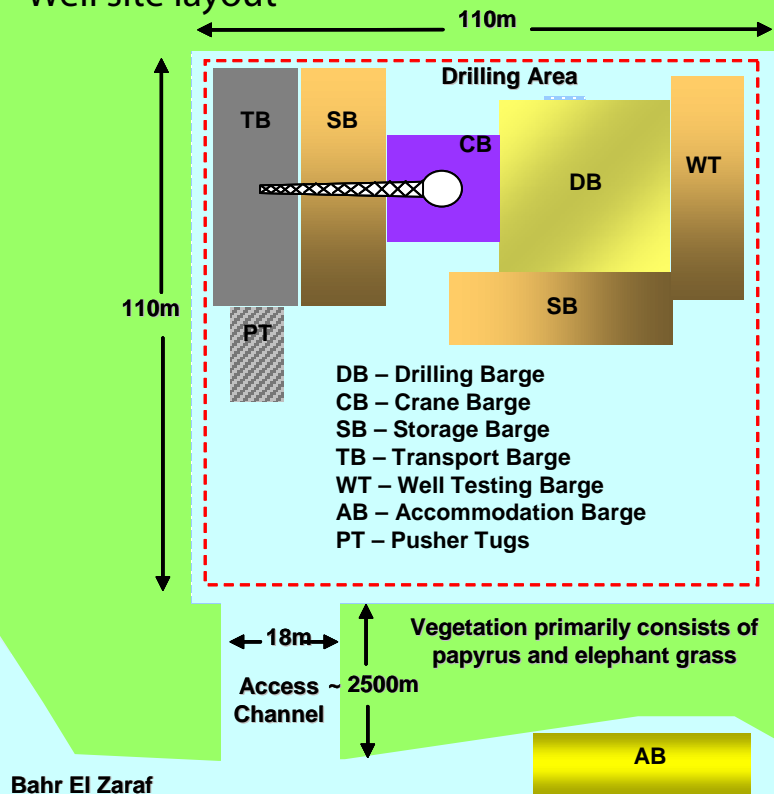


Wan Machar - Well Site Preparation



Well site prepared

Well site layout



Gross prospective resources - 1.5 Bn boe

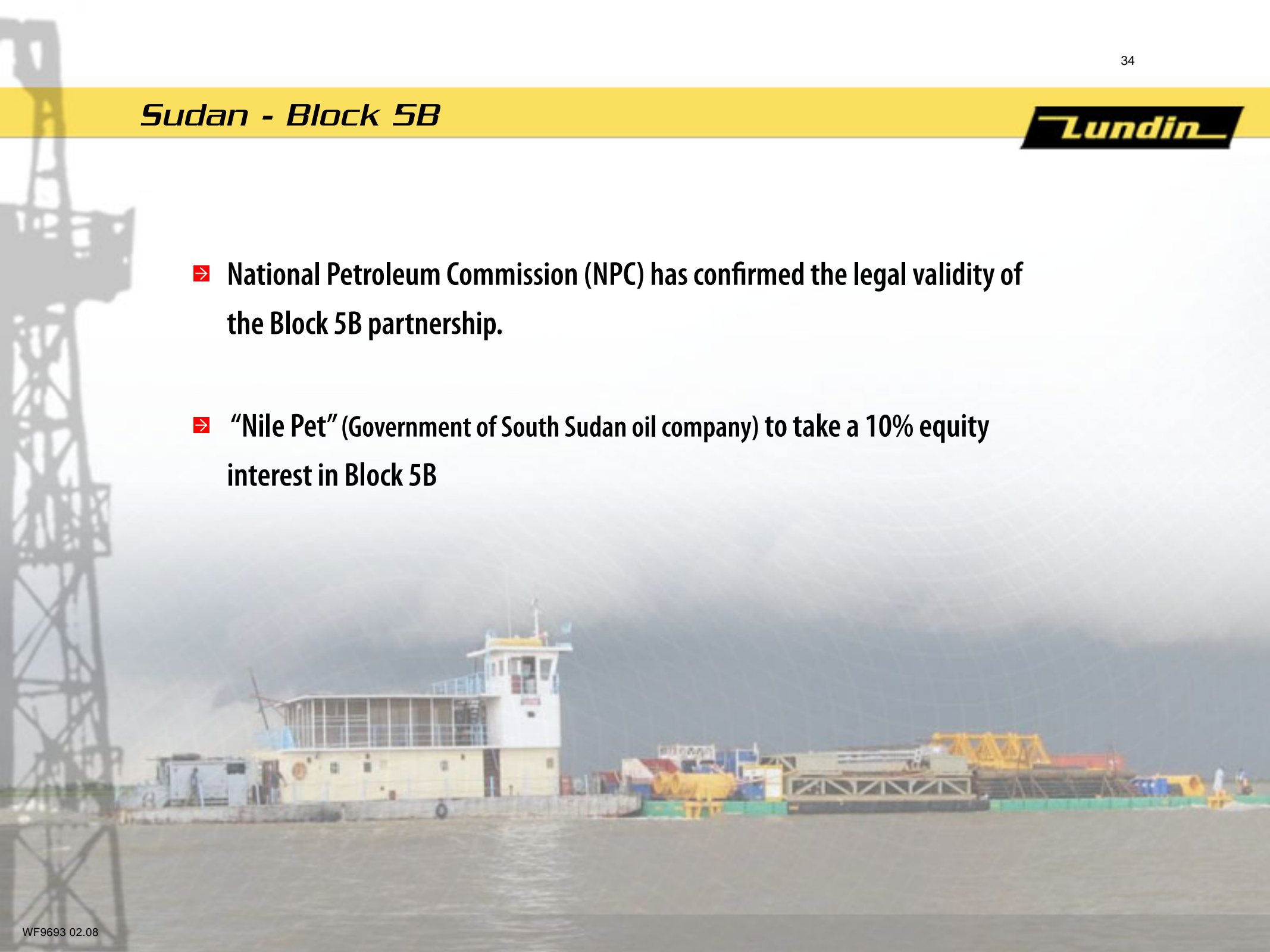


Accomodation barge at well site

Sudan - Block 5B



- **National Petroleum Commission (NPC) has confirmed the legal validity of the Block 5B partnership.**
- **“Nile Pet” (Government of South Sudan oil company) to take a 10% equity interest in Block 5B**

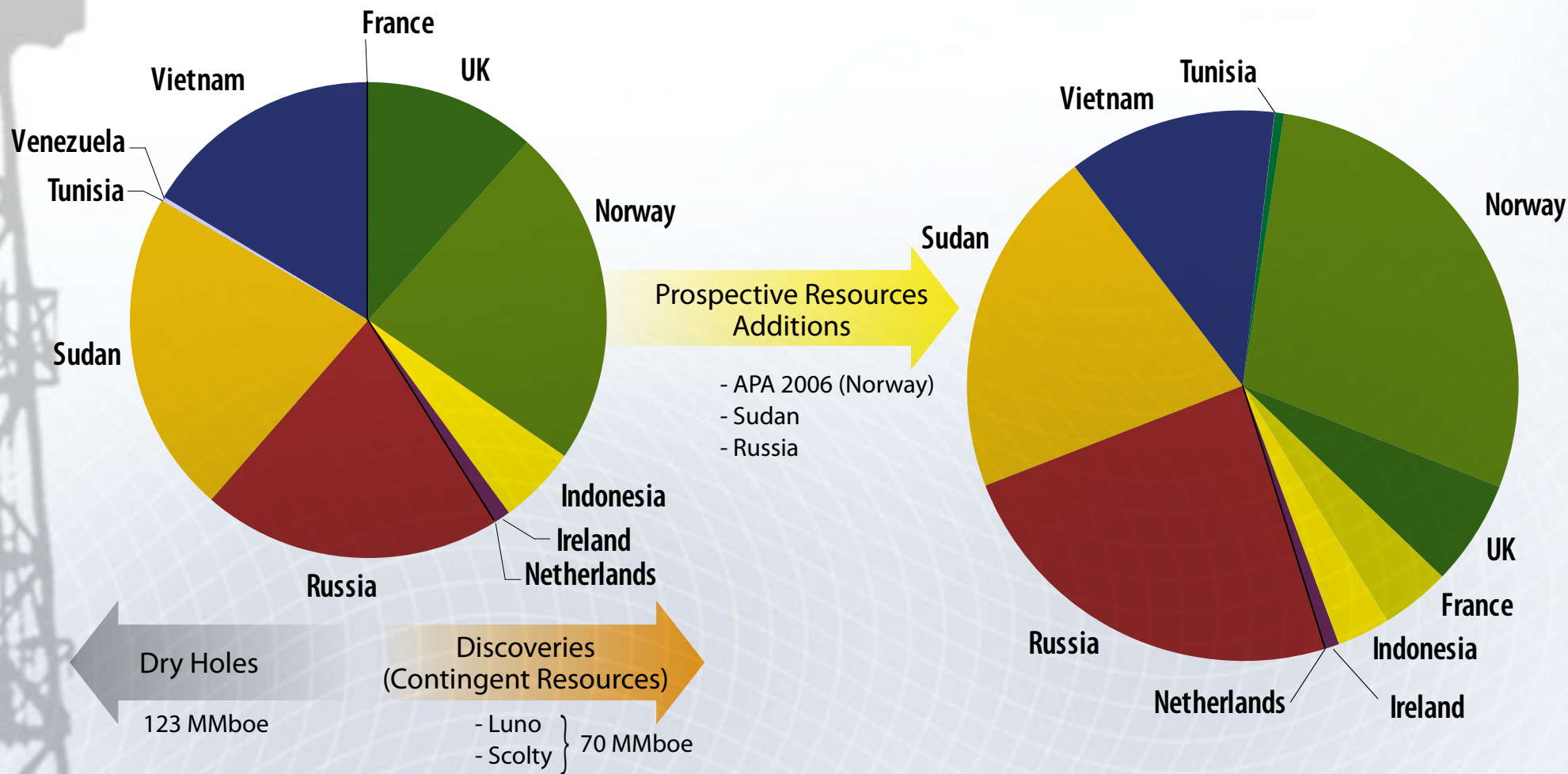


Prospective Resources - Net Unrisked Resources

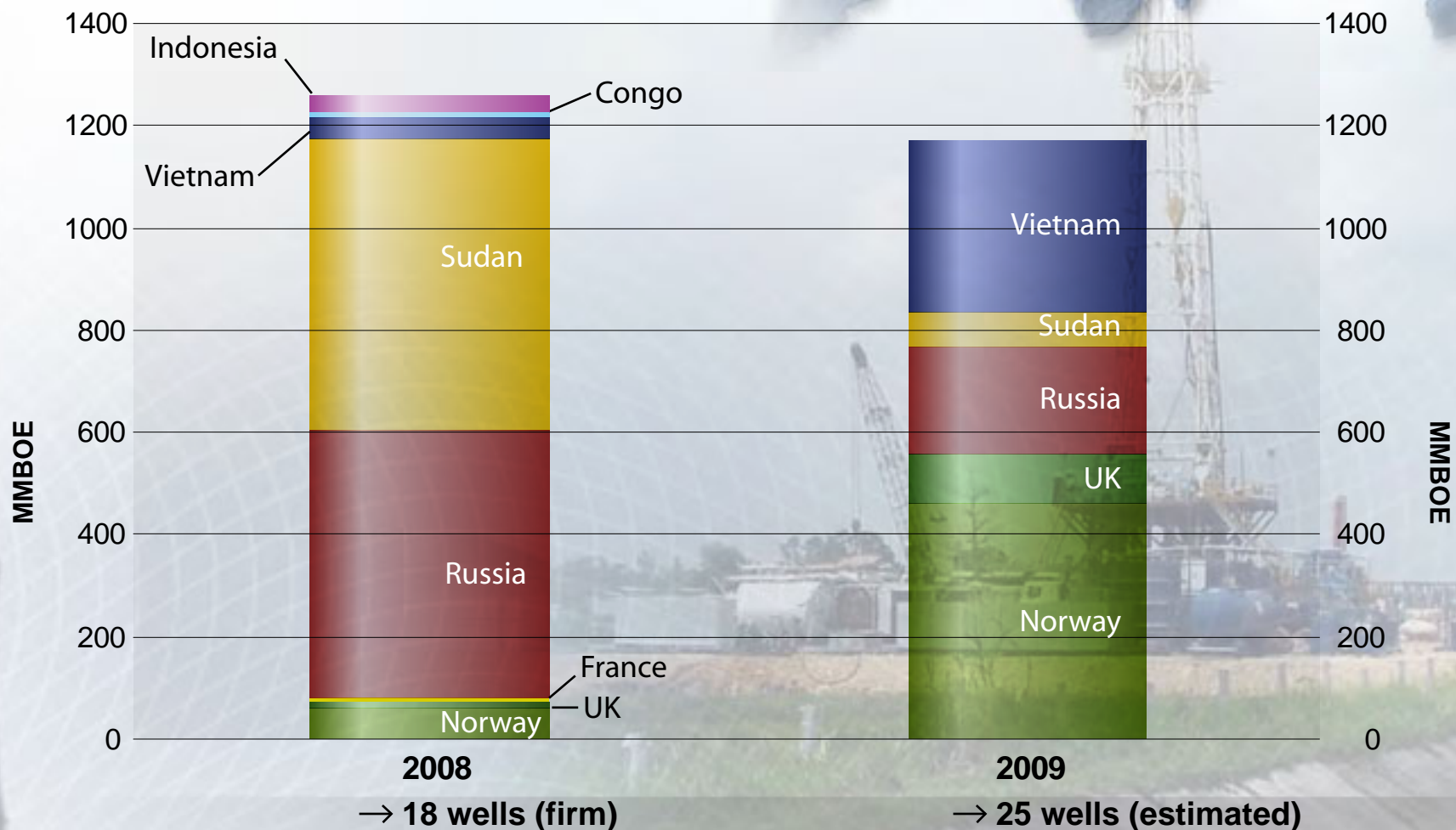


2007 Prospective Resources*: 2.7 bn boe net unrisked

2008 Prospective Resources*: 3.1 bn boe net unrisked



Targeted Prospective Resources - Net Unrisked



Exploration Activity 2008



- ➔ 17 wells in 2008
- ➔ Net unrisked 1.26 bn boe targeted in 2008
- ➔ Net risked 380 MMboe targeted in 2008



Country	Licence	Prospect	Gross Unrisked MMBOE	Net Interest	Operator	Likely Drilling Schedule 2008			
						Q1	Q2	Q3	Q4
Norway	PL292	Pi North	9	40%	BG	█			
	PL340	Marihone A/B	39	15%	Marathon				Moved to 2009 ▶
	PL304	Aegis	104	50%	Lundin				█
UK	P1107	Torphins	28	40%	Lundin			█	
Russia	Lagansky	Morskaya	641	70%	Lundin		█		
		Langaskaya	106	70%	Lundin			█	█
Sudan	Block 5B	Wan Machar	1542	22.05%	WNPOC	█			
		Barada	541	22.05%	WNPOC		█		
		V1	59	22.05%	WNPOC			█	
		Nyal	176	22.05%	WNPOC	█			
France	Paris Basin	Ferrieres	14	65%	Lundin			█	
Vietnam	Block 06/94	"A"	127	33.3%	Pearl				█
Congo	Marine XI	-	-	18.75%	Soco				█
Indonesia	Salawati Island/Basin		*34	--	PetroChina	█	█	█	

TOTAL 3,420 MMBOE

* Net Unrisked MMBOE

Reserves Upside Potential

