

Financial Presentation - First Nine Months 2011

Lundin



*C. Ashley Heppenstall, President & CEO
Geoff Turbott, VP Finance & CFO*

DISCLAIMER

Certain statements made in this presentation involve a number of risks and uncertainties that could cause actual results to differ materially from those projected. Certain statements relating to Lundin Petroleum's business and operations are based on management's expectations, estimates and projections. These statements are not guarantees of future performance and involve risks, uncertainties and assumptions that are difficult to predict. Certain statements are based upon assumptions as to future events that may not prove to be accurate. Therefore, actual outcomes and results may differ materially from what is expressed or forecasted in such statements. Lundin Petroleum makes no commitment, and disclaims any duty, to update or revise any of these statements.

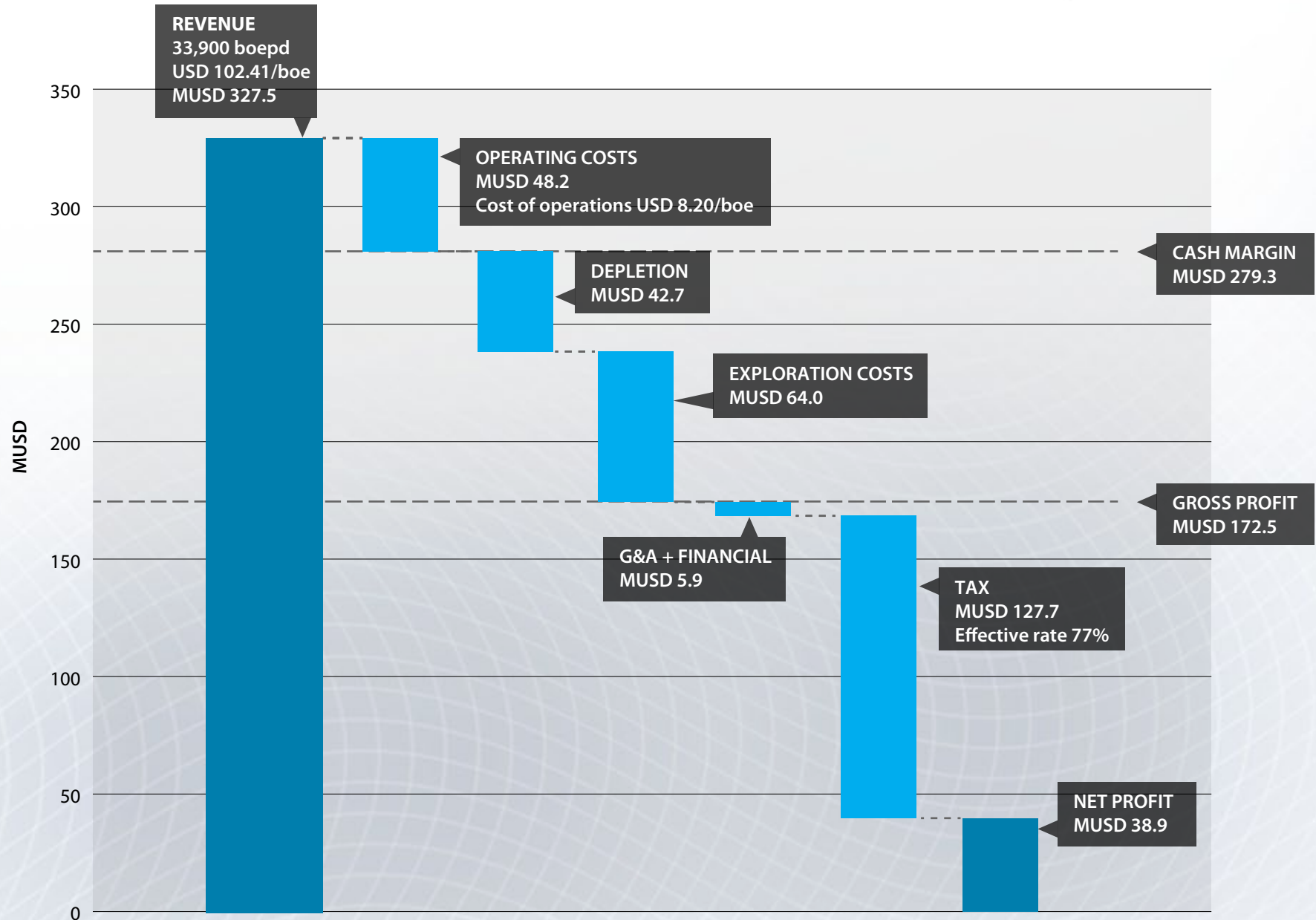
This presentation is for informational purposes only and is not intended as a solicitation or offering of securities in any jurisdiction. The information contained in this presentation is not intended to qualify, supplement or amend information disclosed under corporate and securities legislation of any jurisdiction applicable to Lundin Petroleum and should not be relied upon for the purpose of making investment decisions concerning any securities of Lundin Petroleum.

First Nine Months 2011 Highlights

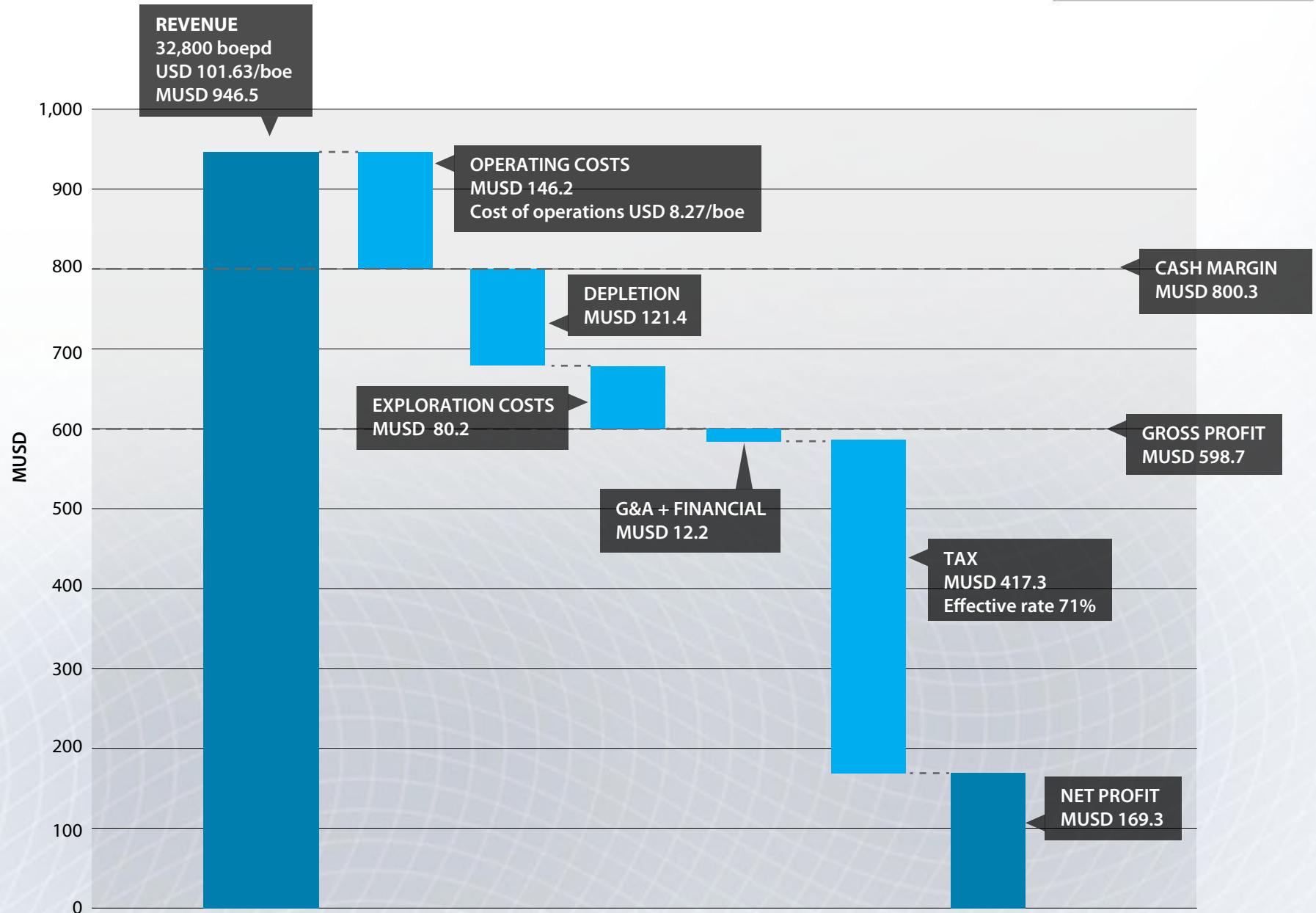


	Third Quarter 2011	First Nine Months 2011
Production (boepd)	33,900	32,800
Average Brent oil price (USD/boe)	113.41	111.89
Cost of operations (USD/boe)	8.20	8.27
Profit after tax (MUSD)	38.9	169.3
EBITDA (MUSD)	262.0	767.3
Operating cash flow (MUSD)	196.5	586.8

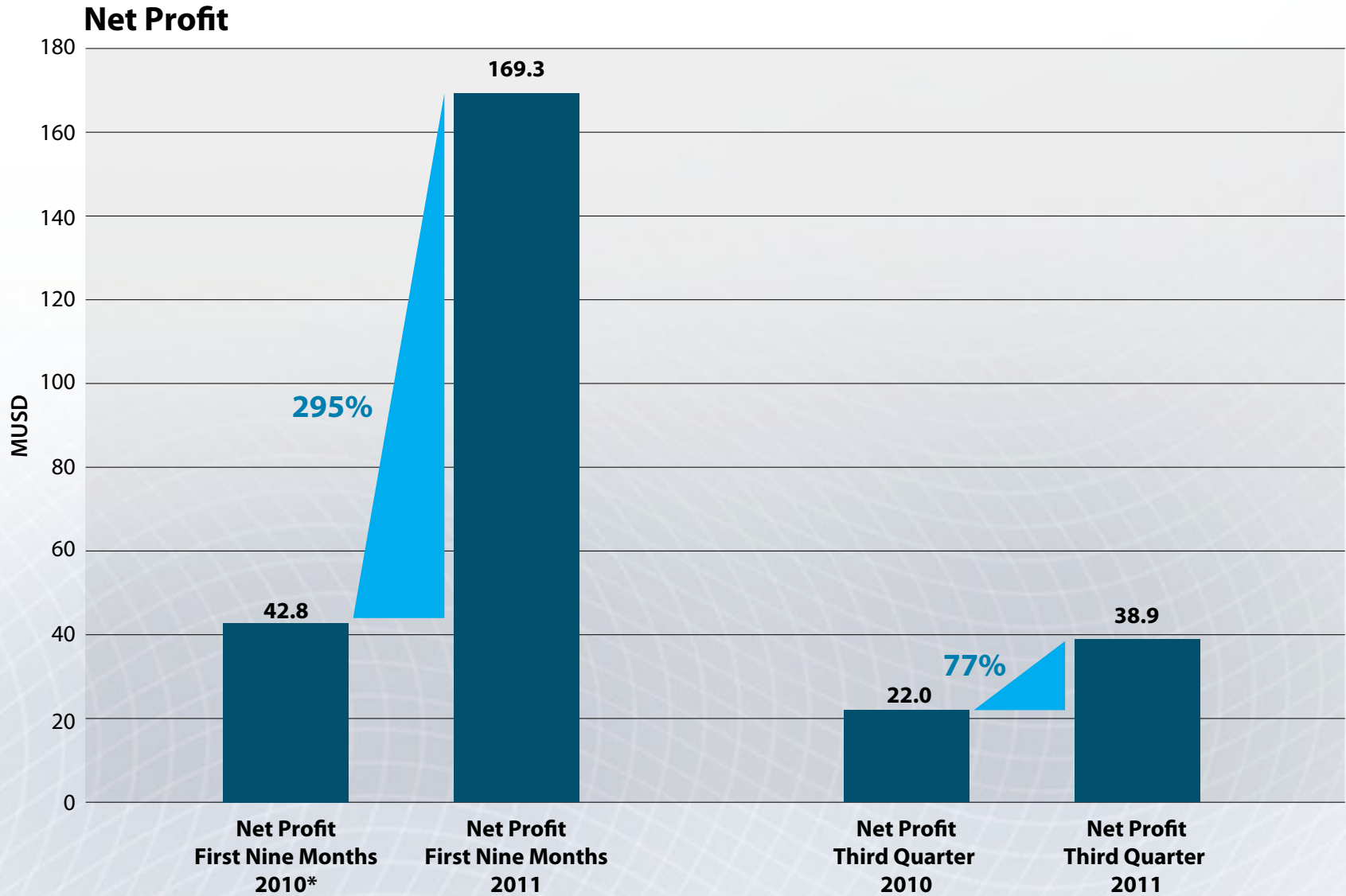
Financial Results - Third Quarter 2011



Financial Results - First Nine Months 2011

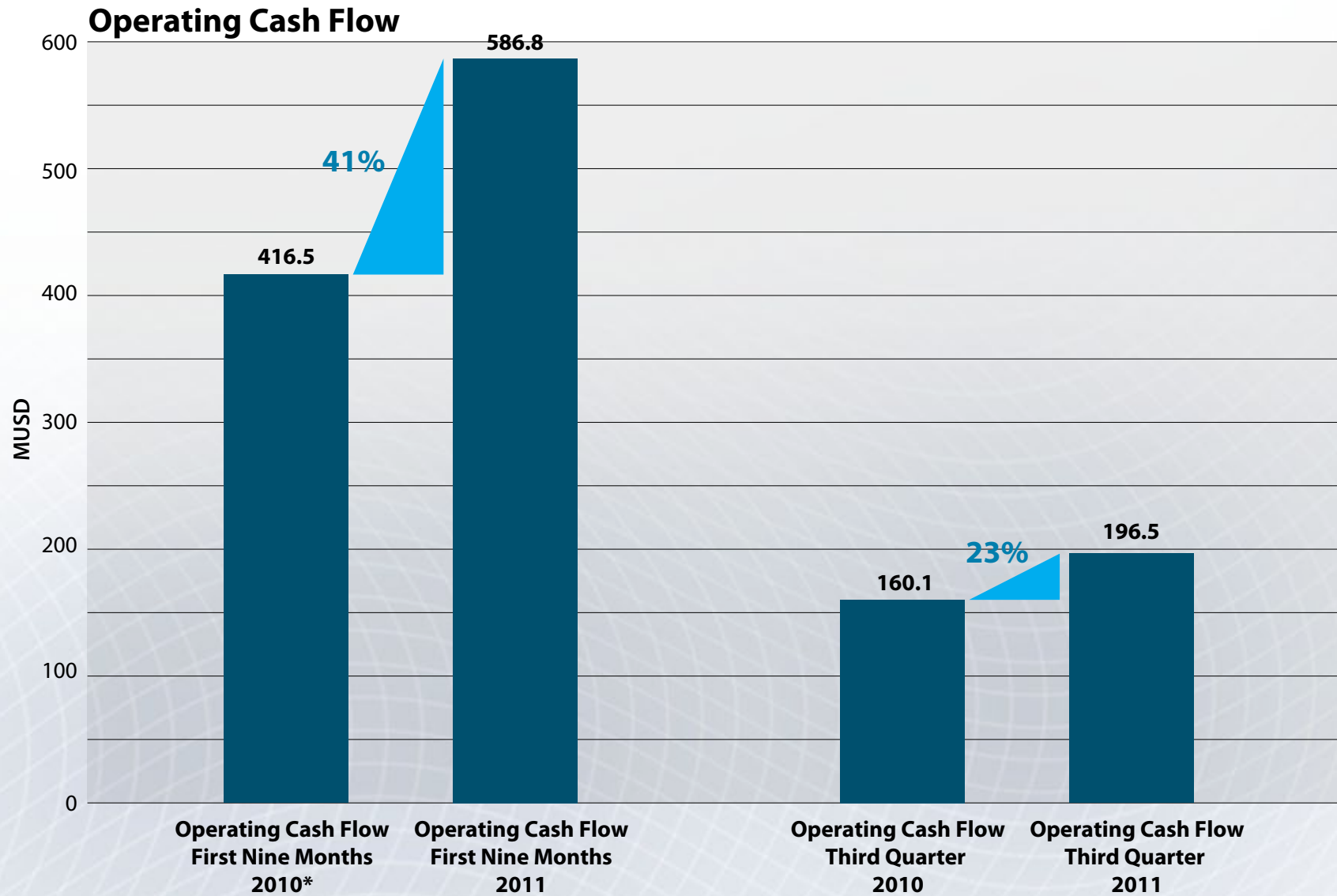


Financial Results - First Nine Months 2011



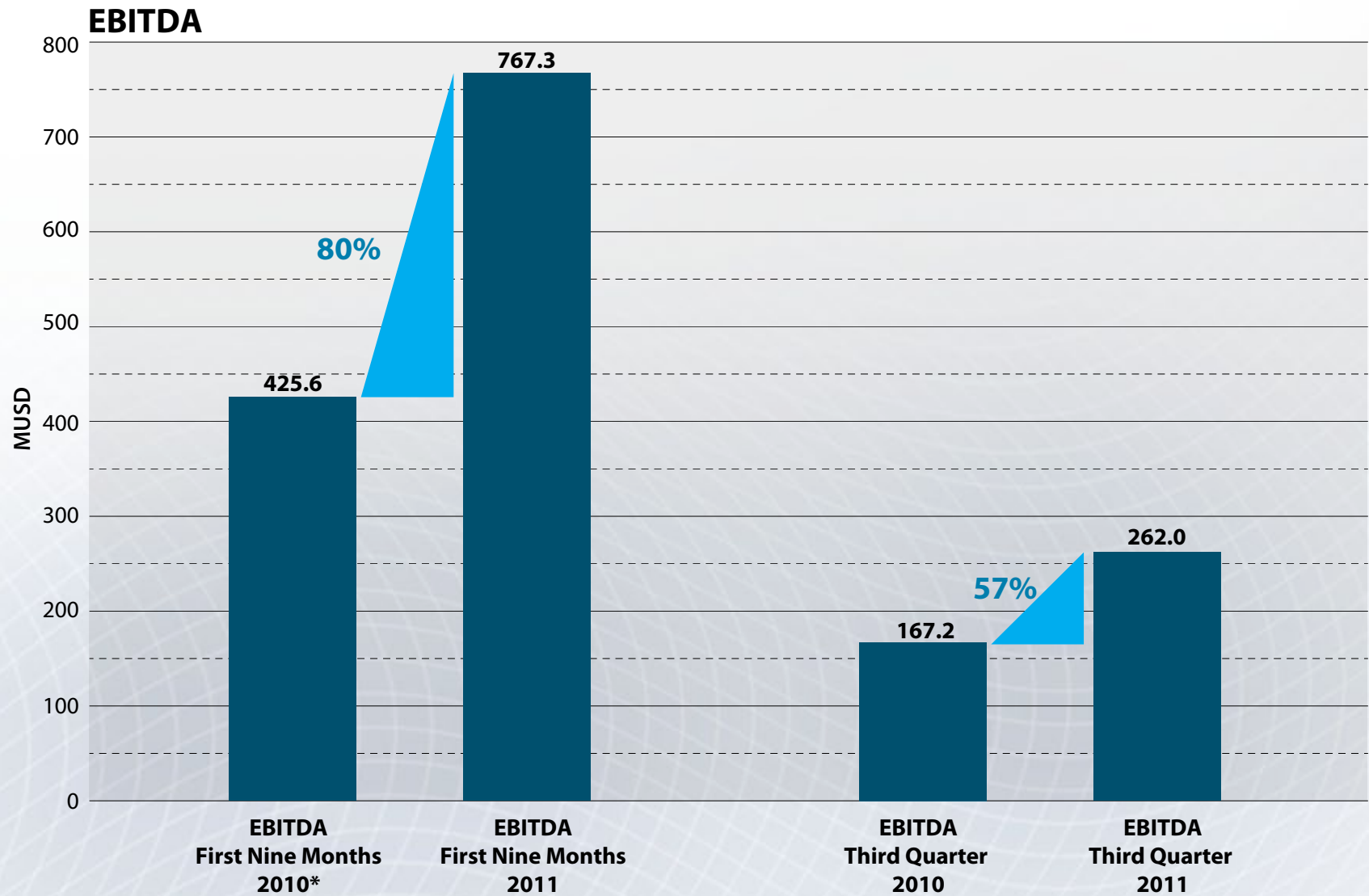
* Excludes discontinued operations

Financial Results - First Nine Months 2011



* Excludes discontinued operations

Financial Results - First Nine Months 2011



* Excludes discontinued operations

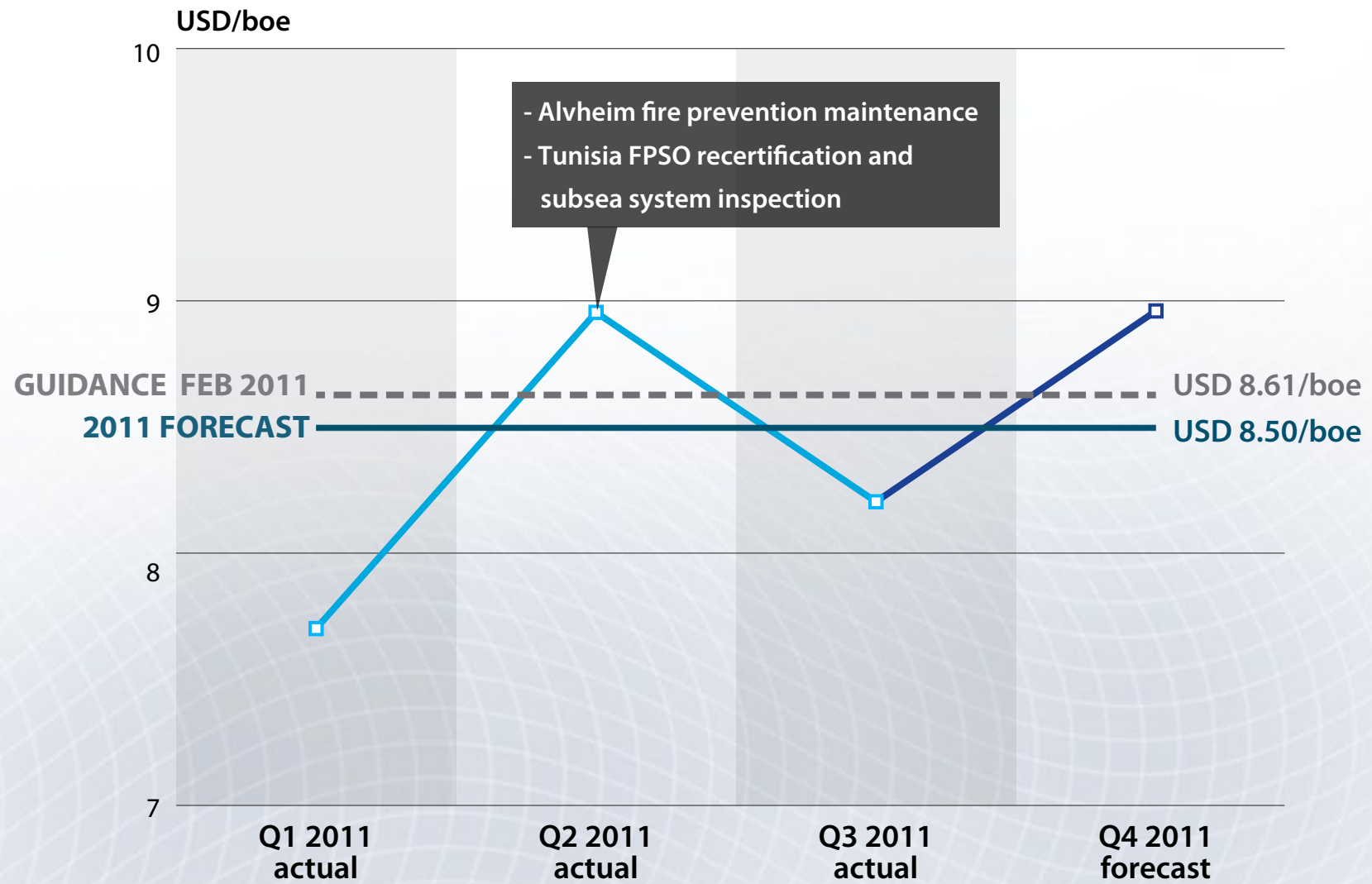
Netback - First Nine Months 2011



	Third Quarter 2011	First Nine Months 2011
<i>Average Brent oil price USD/boe</i>	113.41	111.89
Revenue	105.07	105.60
Cost of operations	-8.20	-8.27
Tariffs	-1.67	-1.97
Royalty and direct taxes	-4.53	-4.41
Changes in inventory/overlift	-0.89	-1.47
Other	-0.18	-0.19
Cash Margin	89.60	89.29
Cash taxes	-26.56	-23.82
Operating Cash Flow	63.04	65.47
General and administration costs ⁽¹⁾	-5.56	-3.68
EBITDA	84.04	85.61

⁽¹⁾ Adjusted for depreciation

Cost of Operations 2011



G & A / Financial Items - First Nine Months 2011



General & Administration	Third Quarter 2011 MUSD	First Nine Months 2011 MUSD
General & administration cash charge	(5.6)	(17.0)
Non-cash provision - Long Term Incentive Plan	(12.4)	(18.1)
Total general & administration expenses	(18.0)	(35.1)

Net Financial Items		
Gain on sale of AOC shares	—	30.0
Foreign exchange gain	16.0	2.7
Interest + other	(3.6)	(8.9)
	12.4	23.8

Tax - First Nine Months 2011



	USD/boe	Effective tax rate
Current tax charge	23.82	36%
Deferred tax charge	22.73	35%
	46.55	71%
Third Quarter		77%

Liquidity [MUSD]



→ at 30 September 2011

Debt Outstanding	222
-------------------------	------------

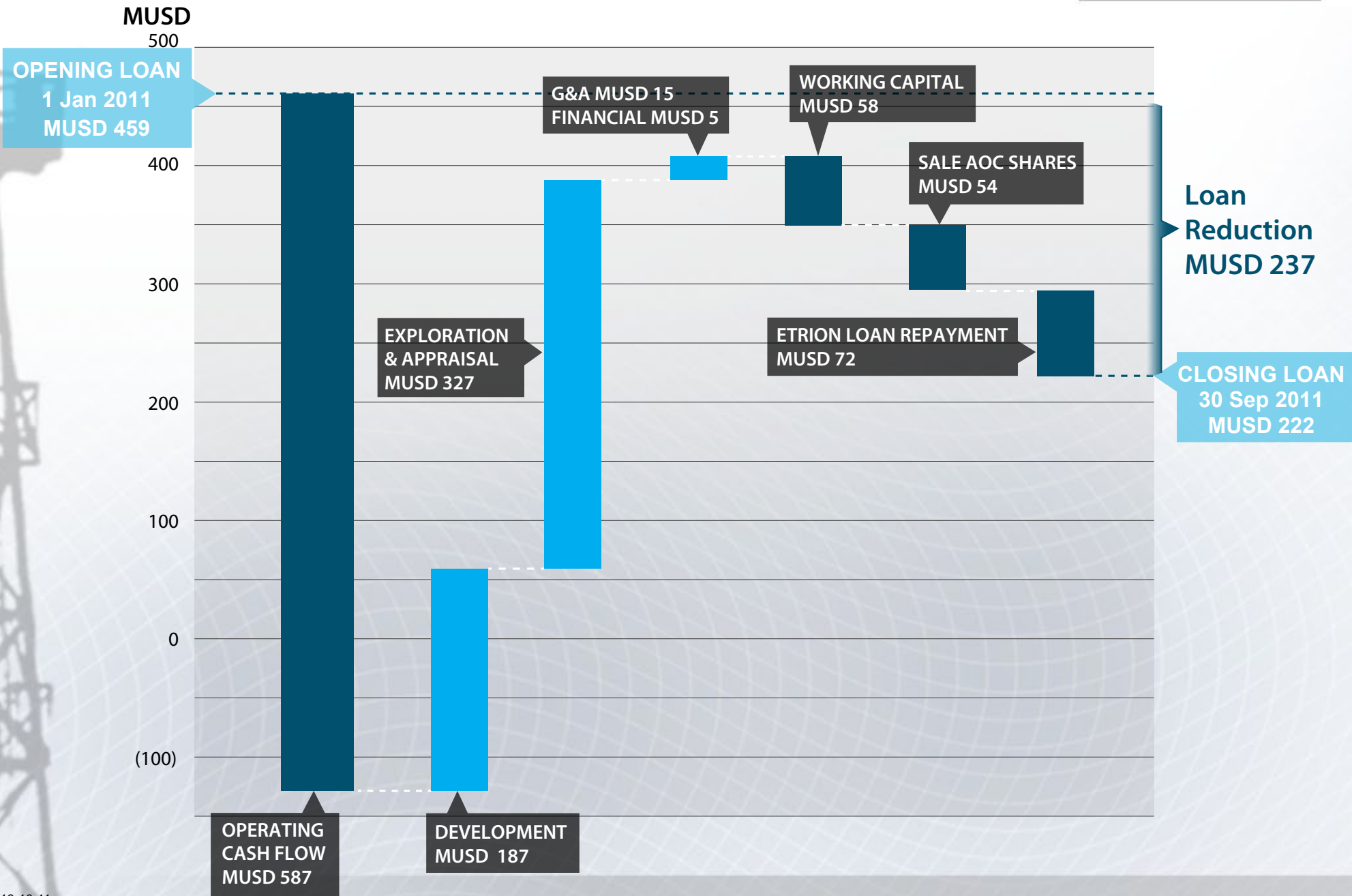
Cash Balances	98
----------------------	-----------

Net Debt Position	124
--------------------------	------------

Availability Under Credit Facility⁽¹⁾	740
---	------------

⁽¹⁾ Loan facility MUSD 850 with reducing availability to 2014

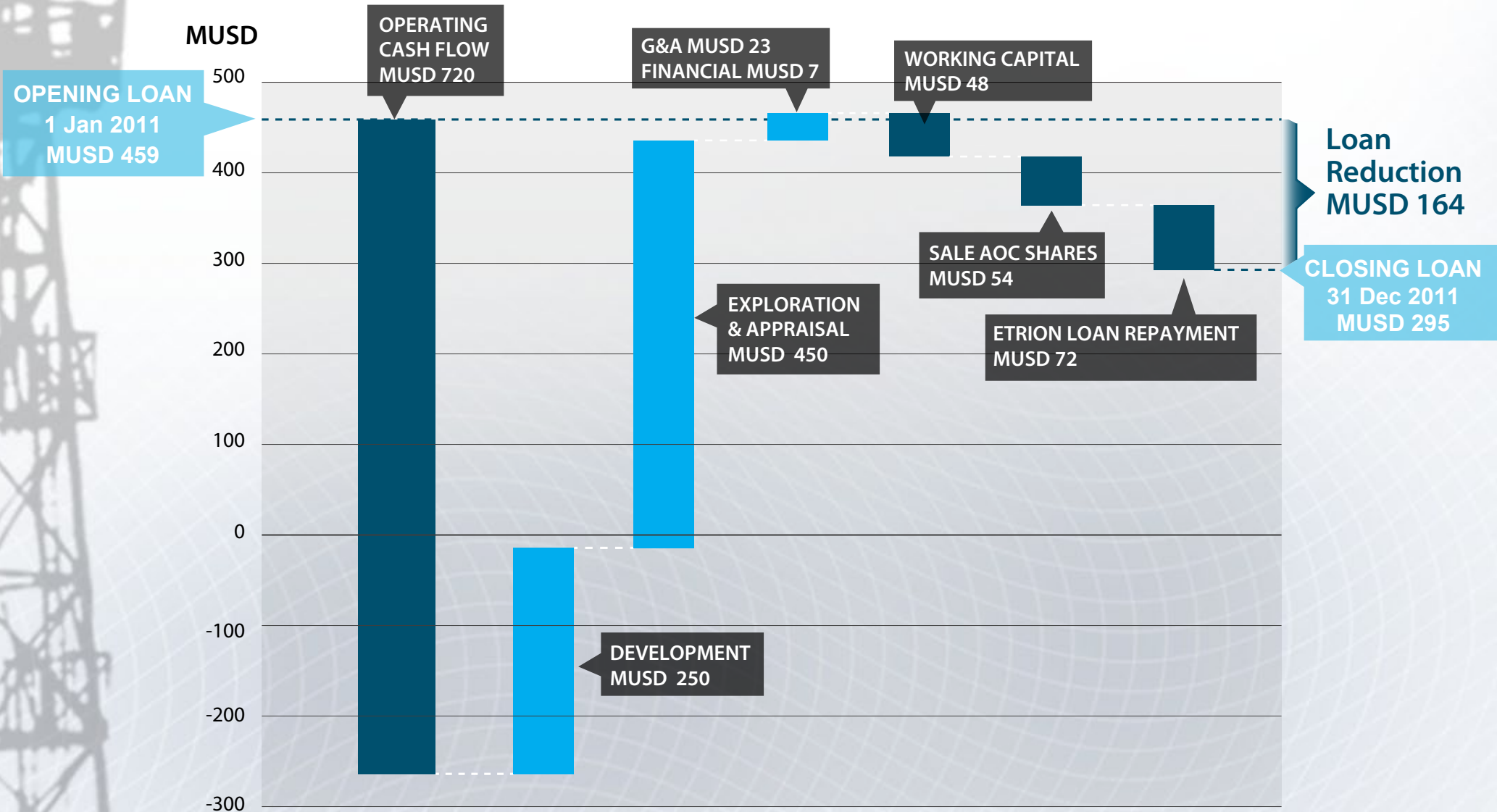
Debt Position - First Nine Months 2011



Debt Position - Forecast End 2011



Current oil prices



First Nine Months 2011 - Operational Highlights



➤ Avaldsnes/Aldous - A new giant oil field in Norway

- Avaldsnes ⇒ 800 million - 1.8 billion barrels
- Aldous Major South ⇒ 900 million - 1.5 billion barrels⁽¹⁾

**Total 1.7 - 3.3 billion barrels
gross recoverable**

First Nine Months 2011 - Operational Highlights



- **Avaldsnes/Aldous - A new giant oil field in Norway**
 - ➔ Avaldsnes ➔ 800 million - 1.8 billion barrels
 - ➔ Aldous Major South ➔ 900 million - 1.5 billion barrels⁽¹⁾

- **Strong production ➔ 33,900 boepd in Q3**
 - ➔ 2011 guidance maintained at 31-34,000 boepd.

**Total 1.7 - 3.3 billion barrels
gross recoverable**

First Nine Months 2011 - Operational Highlights



- **Avaldsnes/Aldous - A new giant oil field in Norway**
 - ➔ Avaldsnes ⇒ 800 million - 1.8 billion barrels
 - ➔ Aldous Major South ⇒ 900 million - 1.5 billion barrels⁽¹⁾

**Total 1.7 - 3.3 billion barrels
gross recoverable**

- **Strong production ⇒ 33,900 boepd in Q3**
 - ➔ 2011 guidance maintained at 31-34,000 boepd.

- **Development projects**
 - ➔ Gaupe - First oil late 2011
 - ➔ Brynhild - PDO submitted
 - ➔ Luno - FEED completed, PDO submission 2011
 - ➔ Bøyla - PDO to be submitted first half 2012

First Nine Months 2011 - Operational Highlights



- **Avaldsnes/Aldous - A new giant oil field in Norway**
 - ➔ Avaldsnes ⇒ 800 million - 1.8 billion barrels
 - ➔ Aldous Major South ⇒ 900 million - 1.5 billion barrels⁽¹⁾

- **Strong production ⇒ 33,900 boepd in Q3**
 - ➔ 2011 guidance maintained at 31-34,000 boepd.

- **Development projects**
 - ➔ Gaupe - First oil late 2011
 - ➔ Brynhild - PDO submitted
 - ➔ Luno - FEED completed, PDO submission 2011
 - ➔ Bøyla - PDO to be submitted first half 2012

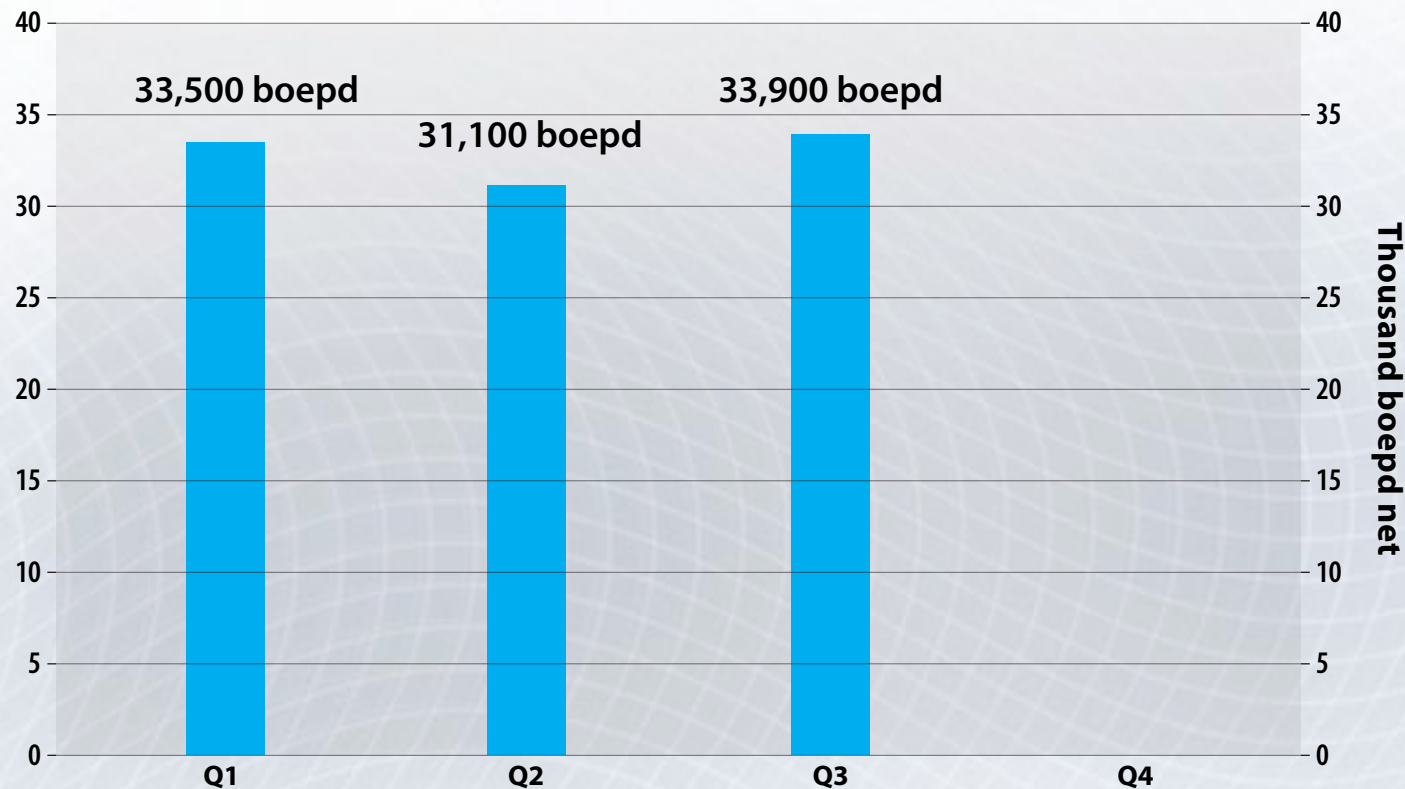
- **Exploration activity to remain strong**
 - ➔ Exploration programme 2012
 - Norway ⇒ 8 exploration wells, 4 appraisal wells
 - Malaysia ⇒ 5 exploration wells
 - Further wells in France, Netherlands and Congo

Total 1.7 - 3.3 billion barrels gross recoverable

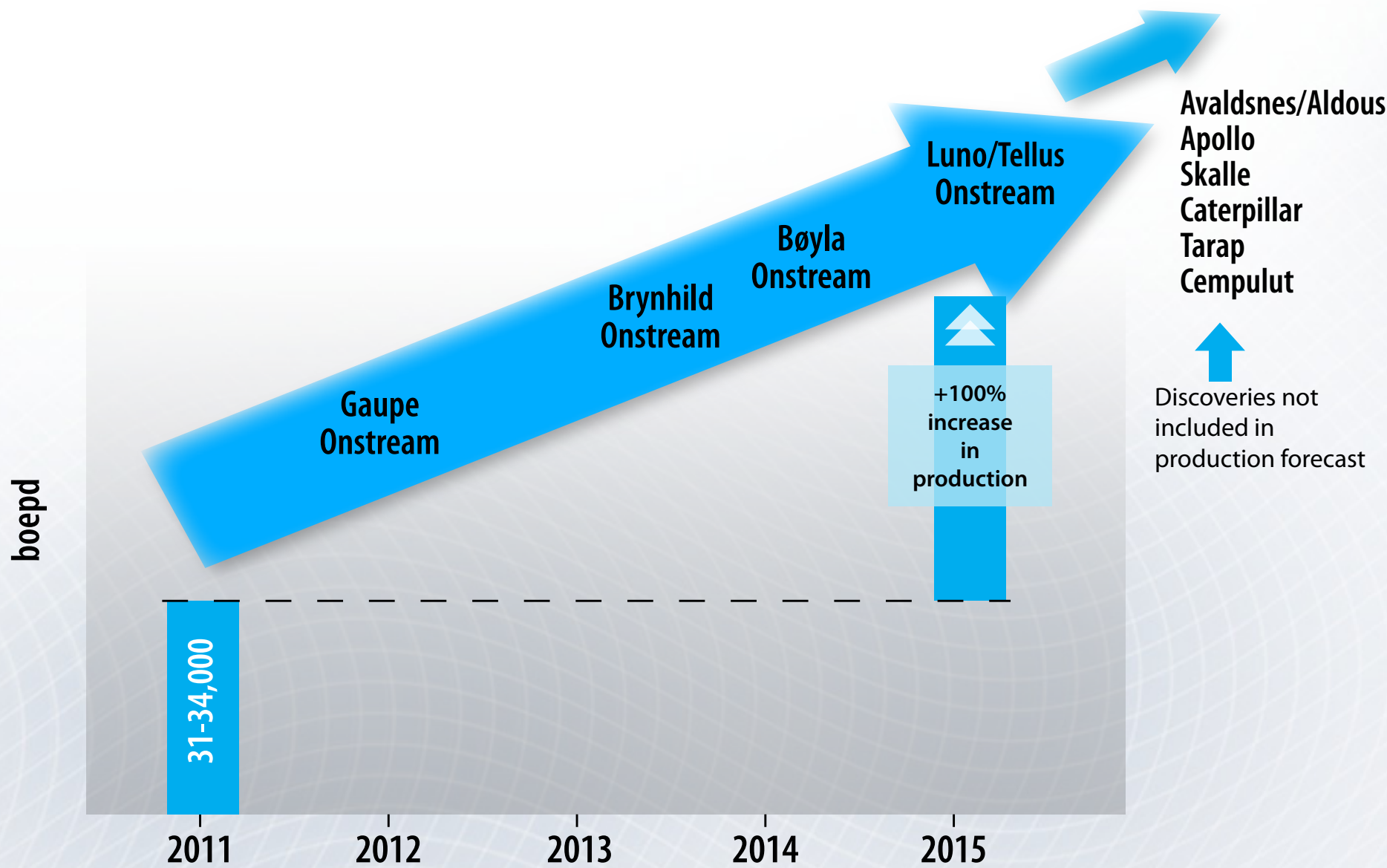
Strong Production in First Nine Months 2011



- Strong 9 month production 32,800 boepd
- Outperformance of Volund and Alvheim
 - Alvheim ~10,800 boepd
 - Volund ~11,900 boepd
- 2011 production guidance remains at to 31,000 - 34,000 boepd



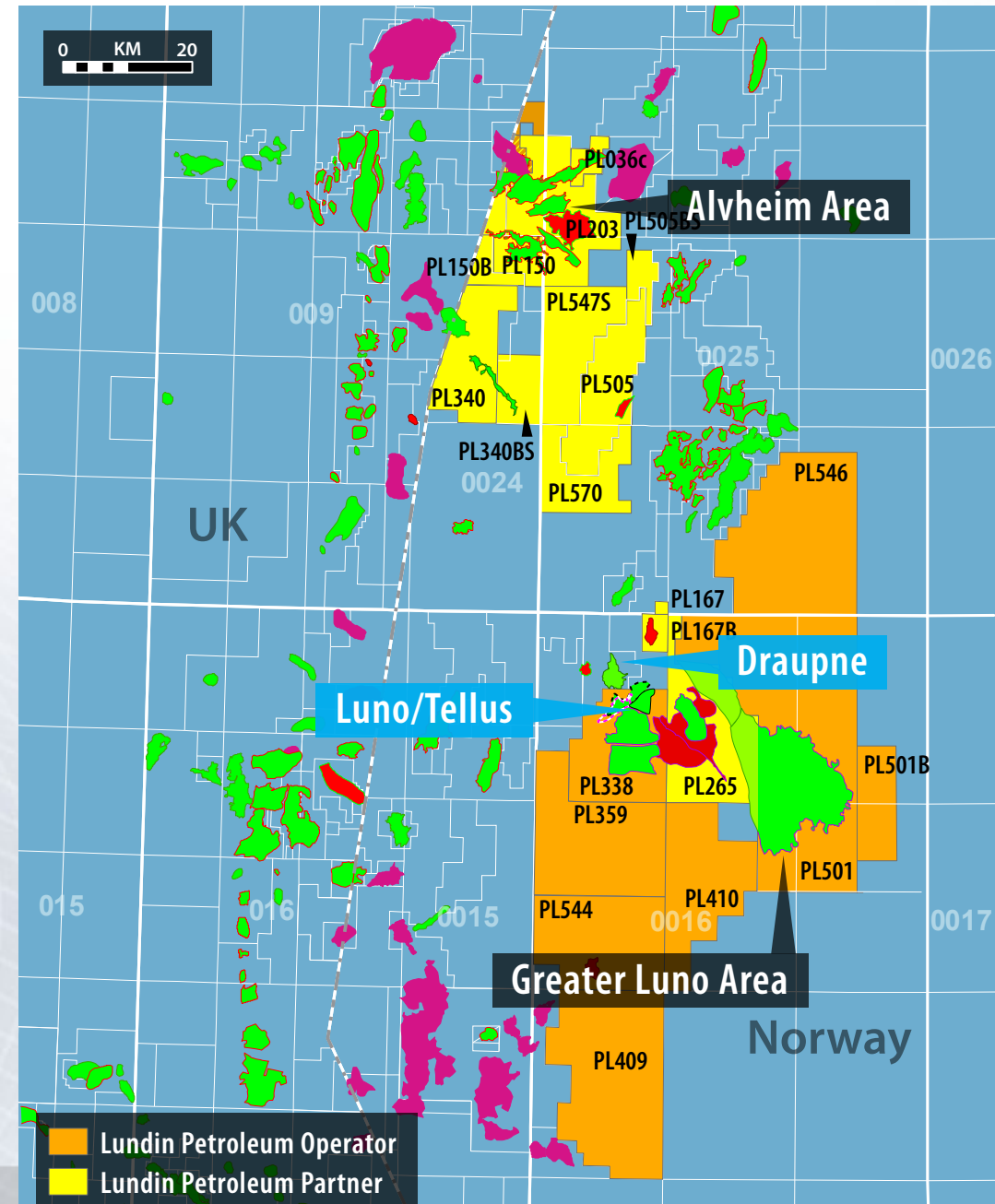
Increase of Production



Greater Luno Area - Luno/Tellus Development



- ➔ **Lundin Petroleum interest: 50% (operator)**
 - ➔ Wintershall 30%, RWE 20%
- ➔ **Development Plan substantially complete**
 - ➔ FEED completed
 - ➔ PDO submission in 2011
 - ➔ First oil 2015
 - ➔ Incorporates the Tellus discovery
- ➔ **Estimated Luno/Tellus reserves: 188 MMboe gross**
- ➔ **Plateau production rate >60,000 bopd gross**

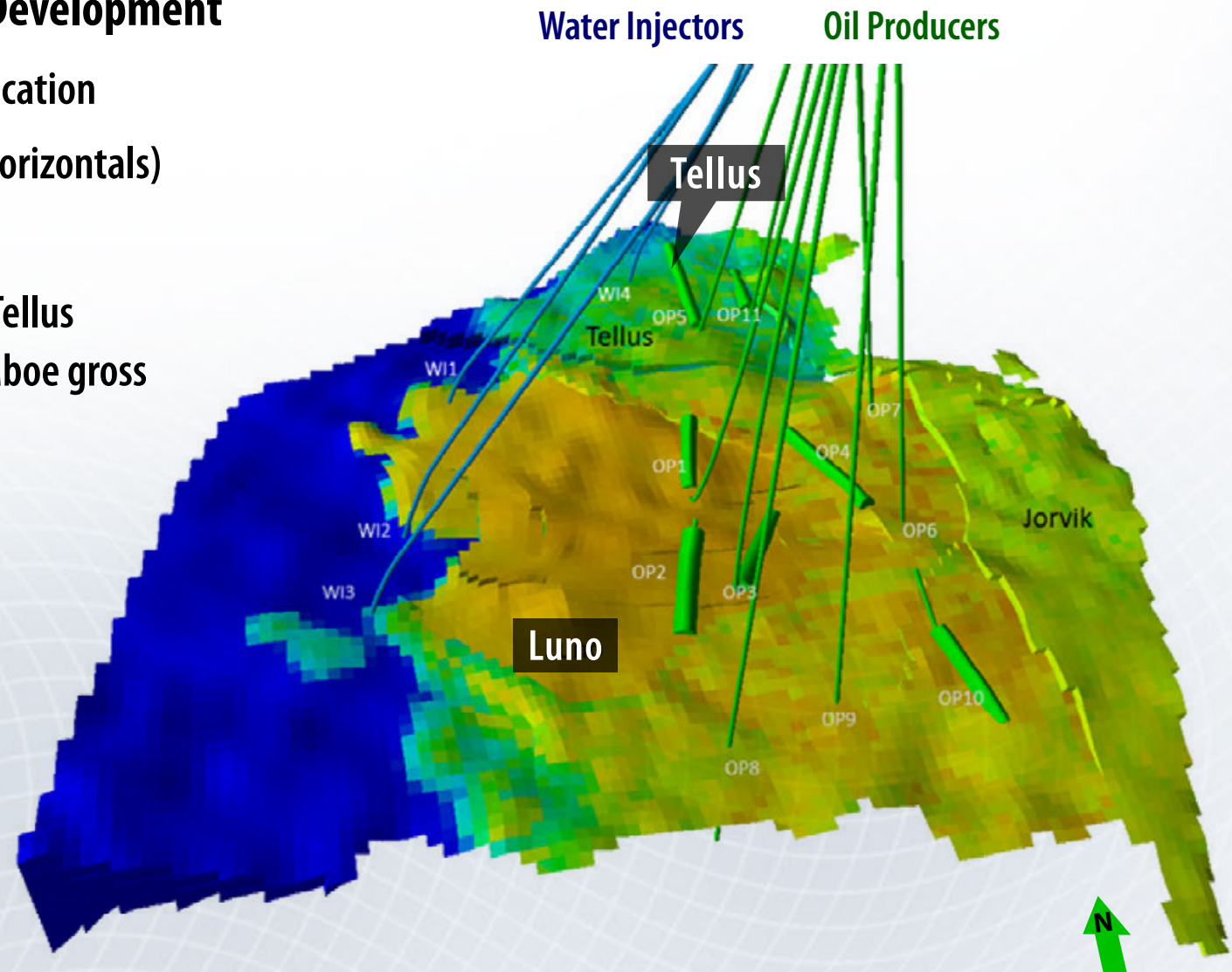


Greater Luno Area - Luno / Tellus Development



Luno Subsurface Development

- Central drilling location
- 11 producers (7 horizontals)
- 4 water injectors
- Estimated Luno/Tellus reserves: 188 MMboe gross

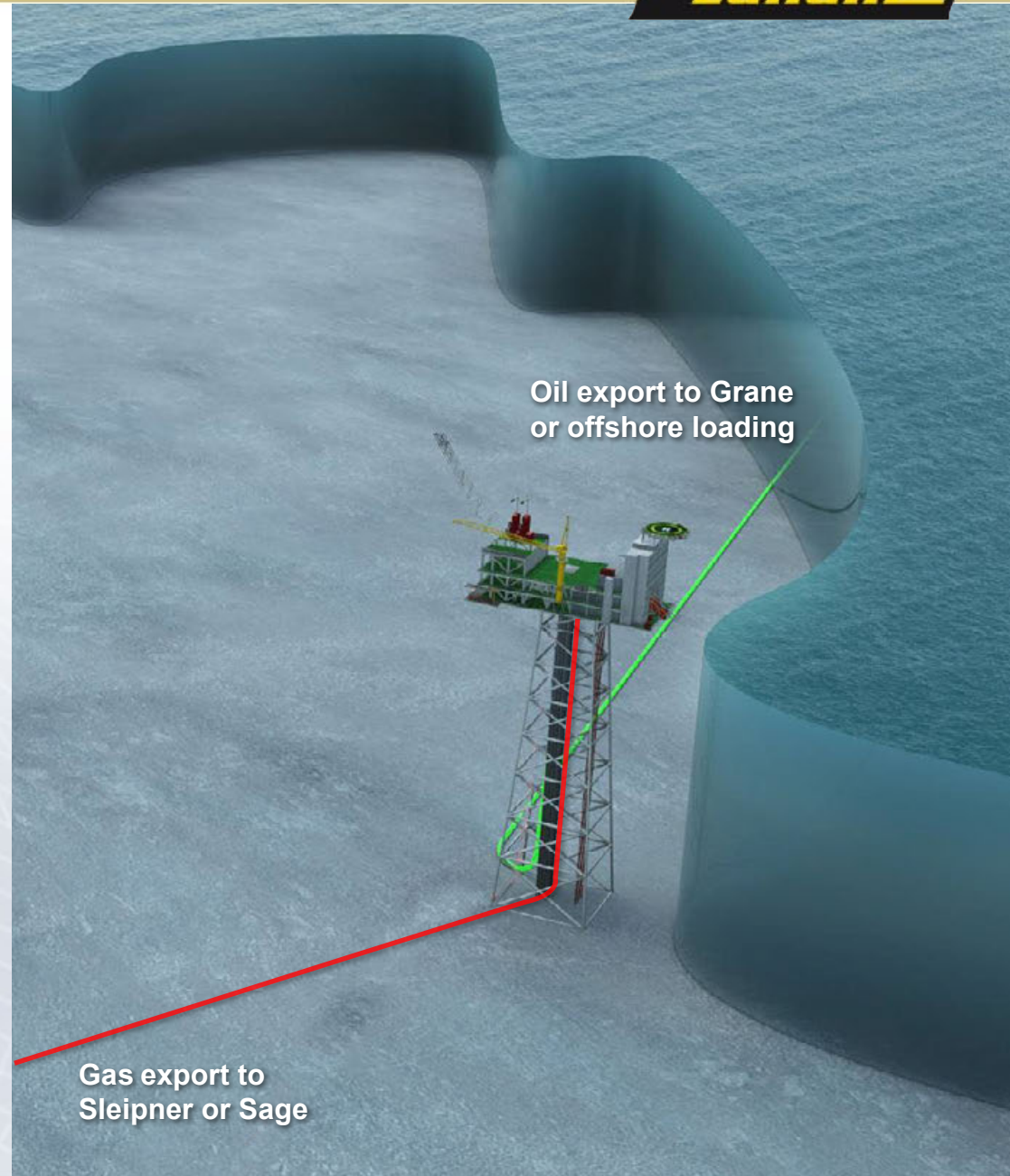


Greater Luno Area - Luno / Tellus Development



Luno development concept selected

- ➔ Dry wellheads
- ➔ Flexibility regarding oil/gas export
- ➔ FEED studies completed



Seven successful exploration wells finding net contingent resources of between 57 - 190 MMboe

- ➔ **Norway**
 - ➔ Caterpillar
 - ➔ Tellus
 - ➔ Skalle
 - ➔ Aldous Major South
 - ➔ Aldous Major North
- ➔ **Malaysia**
 - ➔ Tarap
 - ➔ Cempulut

Remaining 2011 drilling is targetting net prospective resources of 38 MMboe

- ➔ **2011 exploration and appraisal drilling - 7 wells**
 - ➔ 1 well in Norway
 - ➔ 2 wells in Malaysia
 - ➔ 2 wells in Netherlands
 - ➔ 1 well in Congo (Brazzaville)

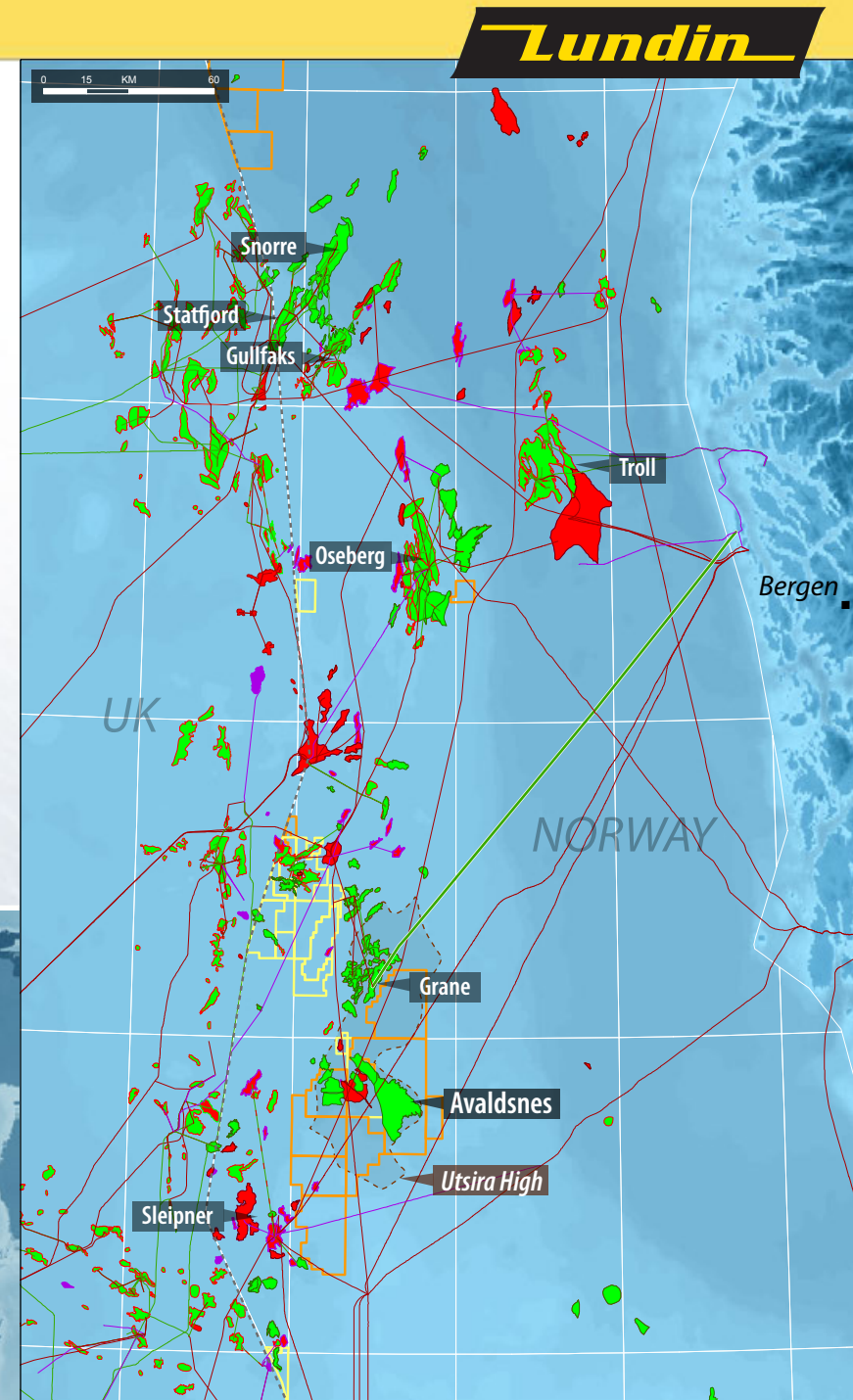
2012 drilling is targetting net unrisked prospective resources of 548 MMboe

➔ **2012 exploration and appraisal drilling - 24 wells**

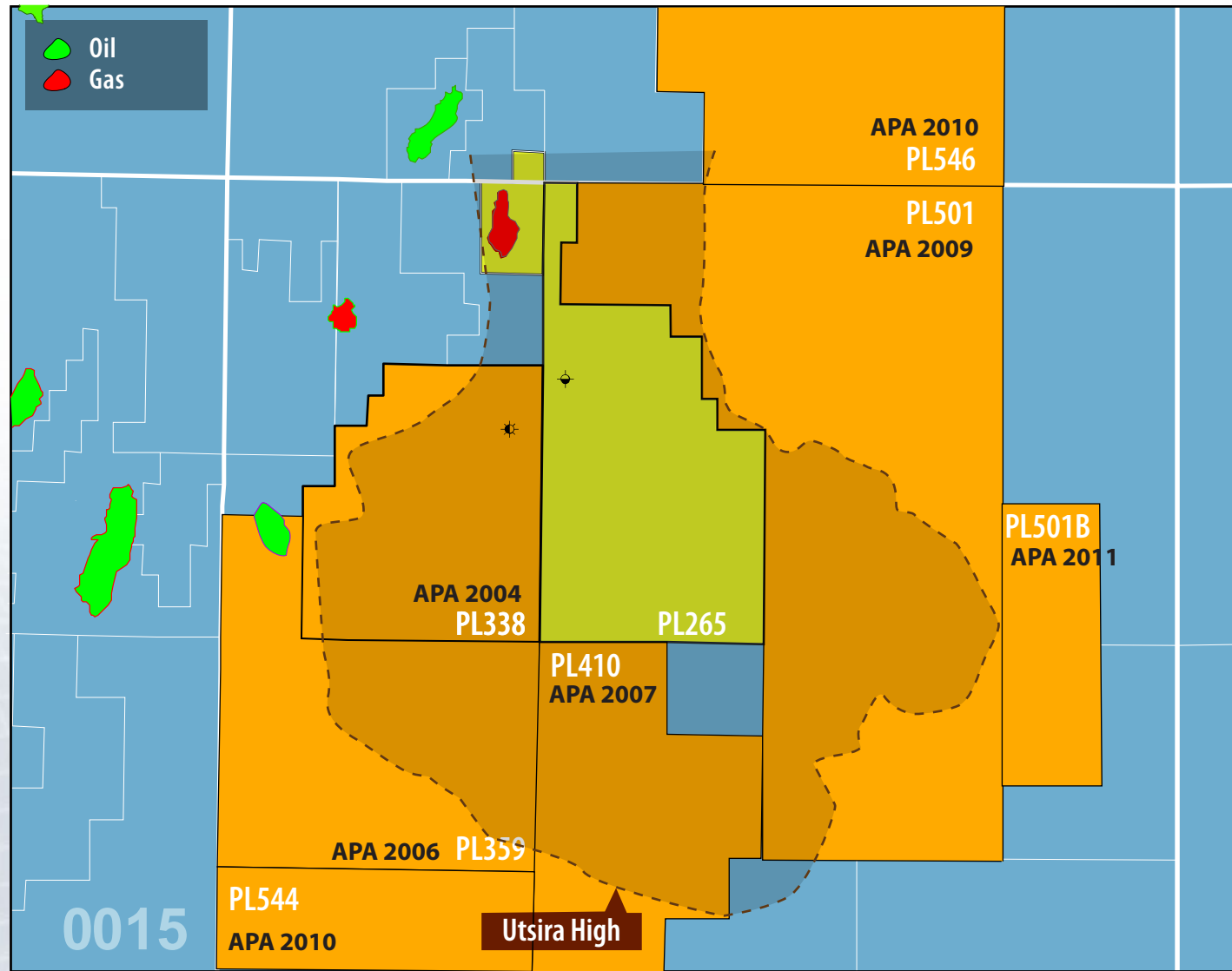
- ➔ Norway 8 exploration wells
 4 appraisal wells
- ➔ Malaysia 5 exploration wells
- ➔ Netherlands 3 exploration wells
- ➔ France 3 exploration wells
- ➔ Congo (Brazzaville) 1 exploration well

Avaldsnes - A New Giant in Norway

- In the heart of the North Sea
- Located in the southern Utsira High
- Close to existing infrastructure
- 35 km south of Grane - significant spare capacity in the Grane oil export pipeline
- Water depth: 115m
- Reservoir depth: ~1900m
- PL501 licence operated by Lundin Petroleum (40%)
 - ➔ Partners: Statoil 40%, Maersk 20%
- PL265 licence operated by Statoil (40%)
 - ➔ Partners: Petoro 30%, Det Norske 20%, Lundin Petroleum 10%



The Southern Utsira High - A Sleeping Giant



- A 4th generation exploration and a major oil province 45 years after the first award: PL001 in 1965
- Major acreage position built by Lundin Petroleum since 2004

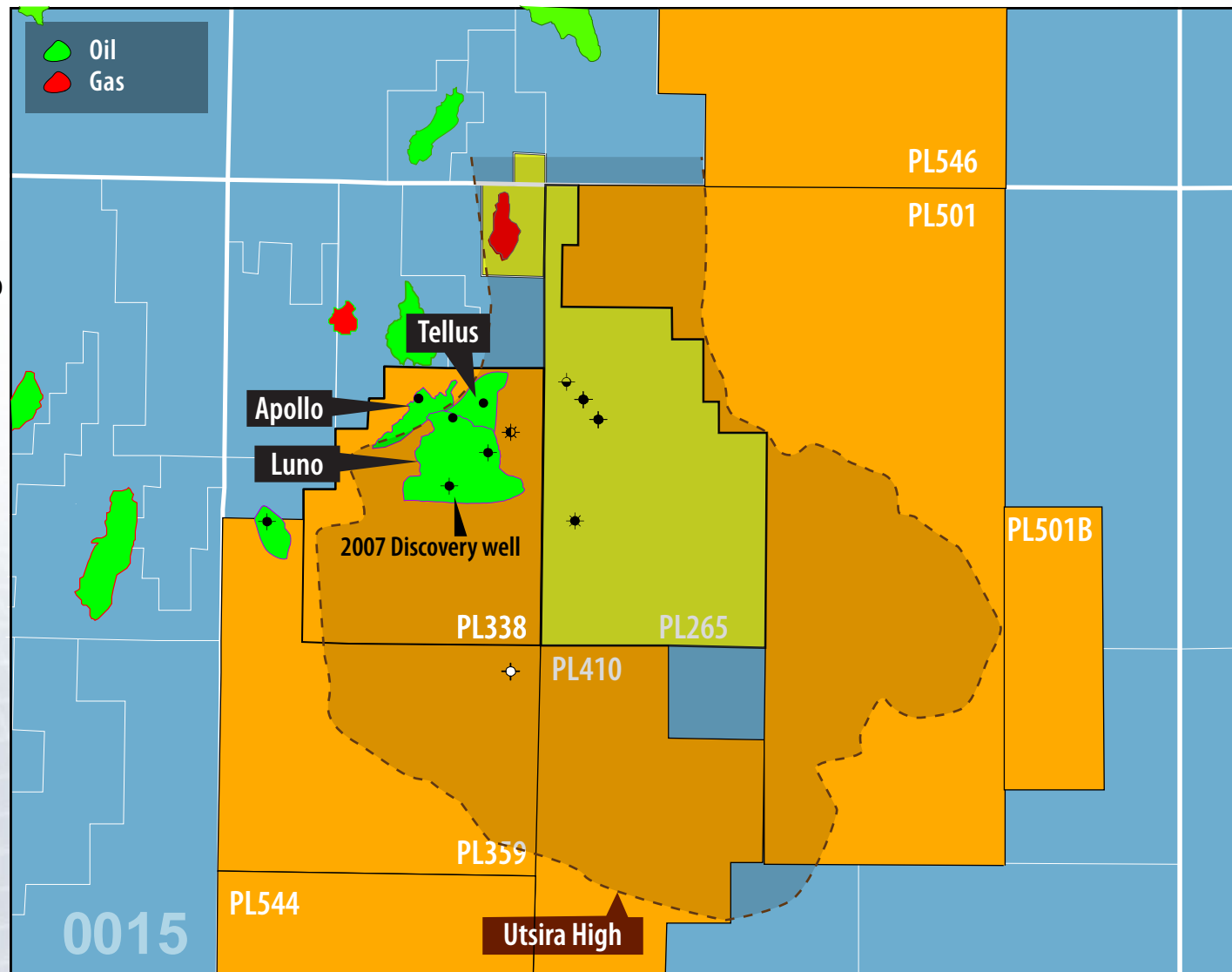
Southern Utsira High Area → over 900km²

- LundinPetroleum Operator
- LundinPetroleum Partner

The Luno/Apollo Discoveries - PL338



0 KM 20



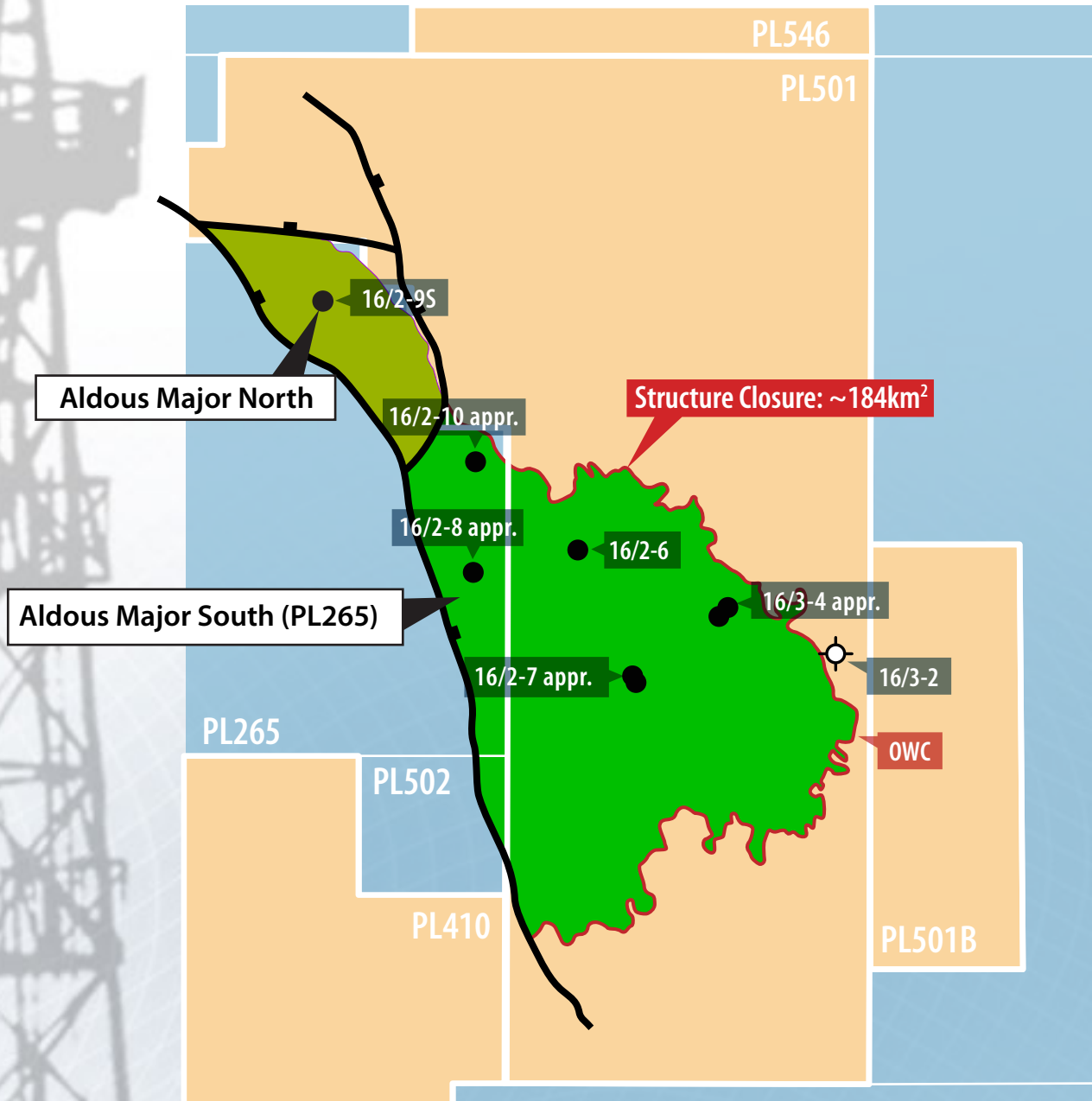
Lundin Petroleum 50% (operator)
Partners: RWE Dea 20%, Wintershall 30%

- **Luno/Tellus discoveries:**
Estimated gross reserves:
188 MMboe
- PDO submission Dec. 2011
- First Oil: 2015

- Apollo discovery:**
- 15-65 MMboe gross
- Appraisal planned in 2012

■ LundinPetroleum Operator
■ LundinPetroleum Partner

Avaldsnes / Aldous - A New Giant in Norway



PL501 (40% operator)

- **Avaldsnes Discovery 2010 (16/2-6)**
 - 1st appraisal (16/3-4) & sidetrack completed
 - 2nd appraisal (16/2-7) & sidetrack completed

➔ Updated gross contingent resources on block 800 - 1,800 MMbo

PL265 (10%)

- **Aldous Major South Discovery**
 - 16/2-8, 65 metre oil column, excellent quality reservoir
 - 1st appraisal (16/2-10) completed: 60 metre column
- **Aldous Major North**
 - Requires further appraisal

➔ Updated gross contingent resources on block 900 - 1,500 MMbo⁽¹⁾

Avaldsnes and Aldous Major South is One Giant Field

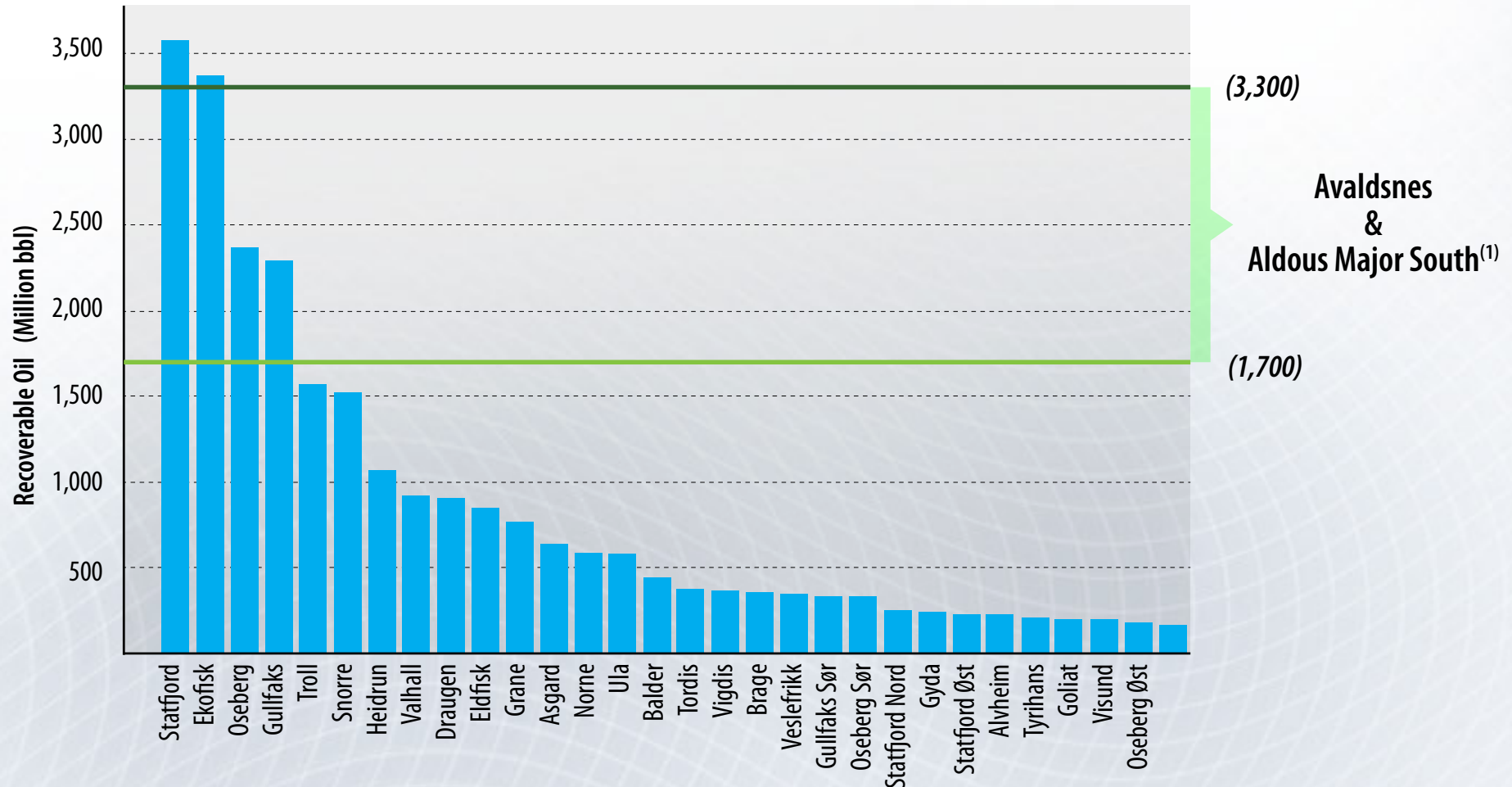


Lundin Petroleum Interest: 10% PL265 & 40% PL501

Contingent resources are gross

⁽¹⁾ Statoil estimate for Aldous Major South

Largest Discovery since 1980's on Norwegian Continental Shelf



Source oil field size: NPD

⁽¹⁾ Statoil estimate for Aldous Major South

Aldous / Avaldsnes - A World Class Reservoir



- **Excellent reservoir quality**
 - ➔ High porosity & permeability sands
 - ➔ Normal pressure & temperature

- **Easily producible oil**
 - ➔ Oil dripping out of the cores
 - ➔ 2 full scale production tests completed
 - ➔ Highly mobile & low viscosity oil
 - ➔ 28° API oil
 - ➔ Low gas/oil ratio

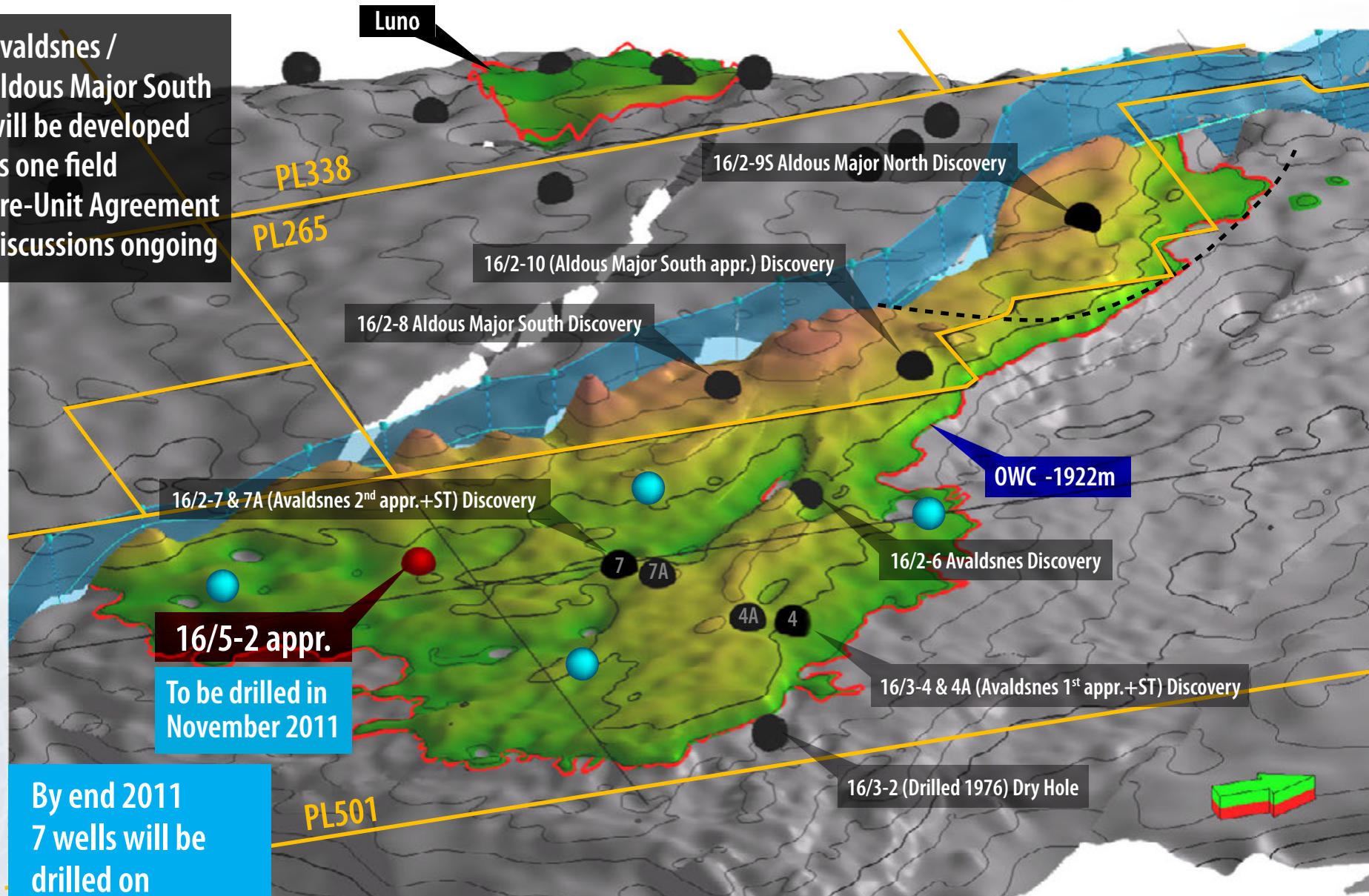
- **Resources easily accessible**
 - ➔ Water depth: 115m
 - ➔ Reservoir depth: ~1900m
 - ➔ 35km to Grane pipeline



Avaldsnes Further Appraisal Programme



- Avaldsnes / Aldous Major South will be developed as one field
- Pre-Unit Agreement discussions ongoing



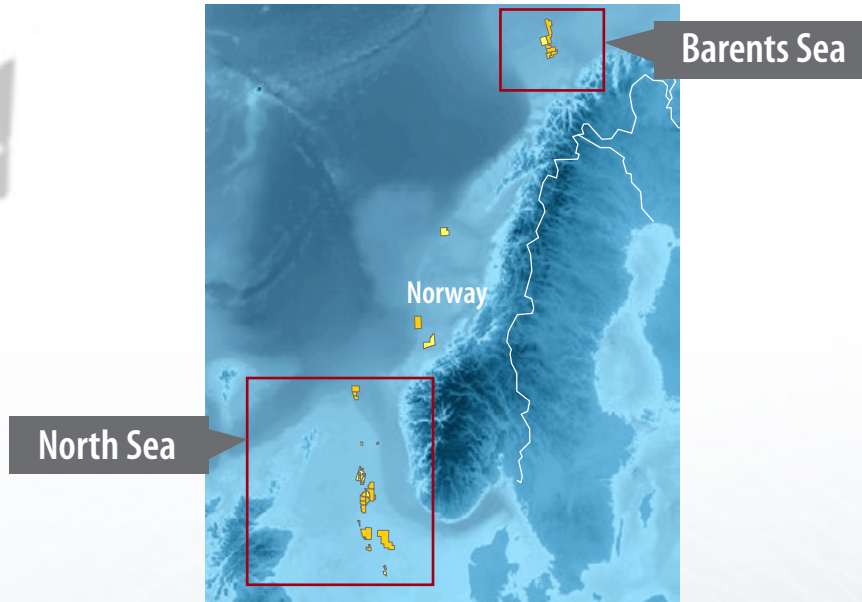
By end 2011
7 wells will be drilled on
Avaldsnes/Aldous

➤ Further appraisal in both Aldous Major South & Avaldsnes in 2012

● 2H11 appraisal wells

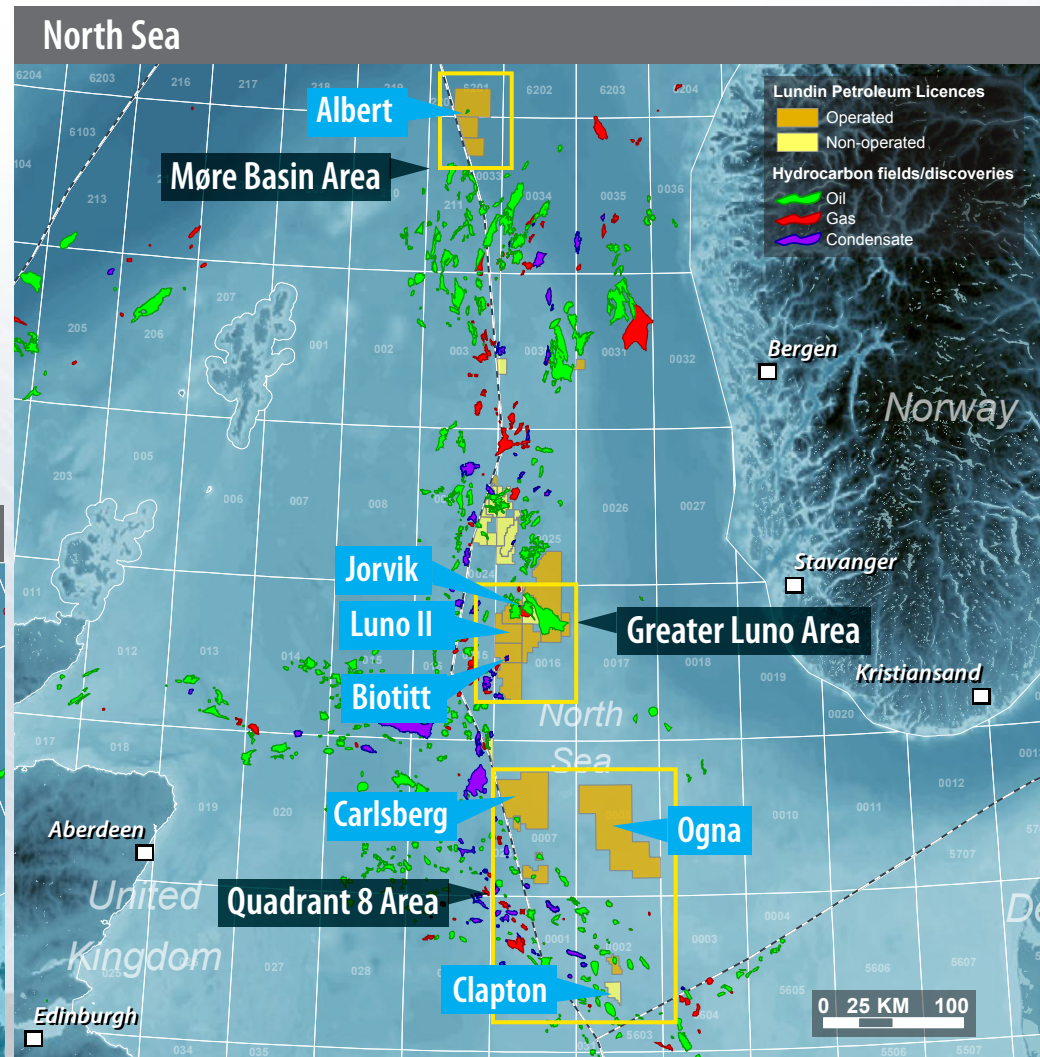
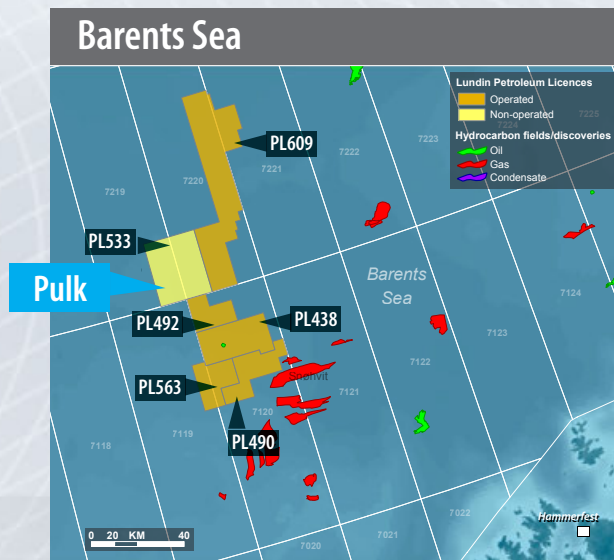
● 2012 preliminary appraisal wells

Norway 2012 Exploration Drilling



➔ 8 exploration wells in 2012 in 4 core areas

2012 prospect (Drilling)



Greater Luno Area & the Southern Utsira High



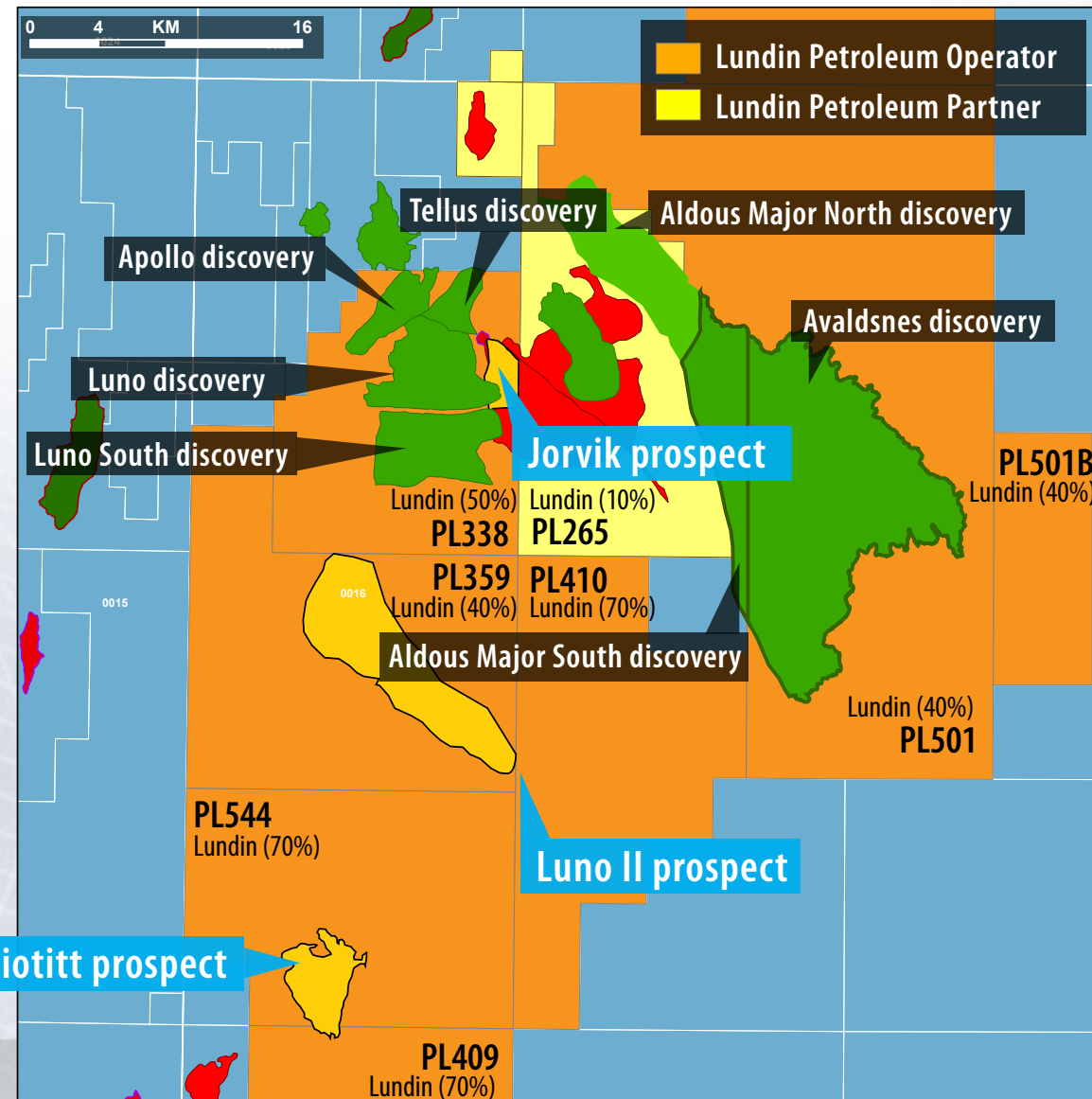
2012 Exploration Drilling

- ➔ **PL544 (Lundin 70% operated)**
Biotitt prospect
 ➔ Gross unrisks prospective resources: 124 MMboe

- ➔ **PL359 (Lundin 40% operated)**
Luno II prospect
 ➔ Gross unrisks prospective resources: 139 MMboe

- ➔ **PL338 (Lundin 50% operated)**
Jorvik prospect
 ➔ Gross unrisks prospective resources: 46 MMboe

- ⇒ **Targetting a total of 166 MMboe net unrisks prospective resources**



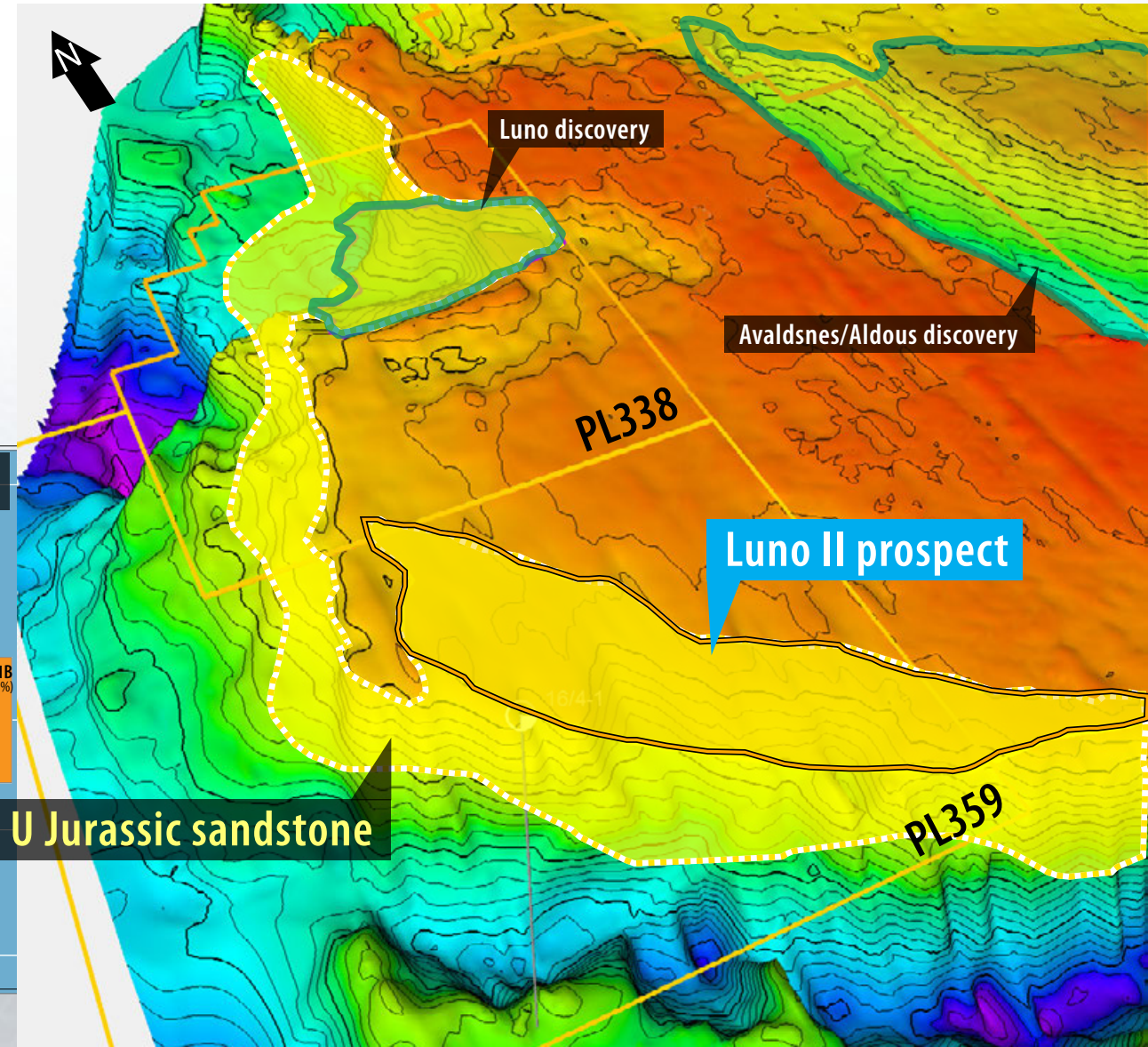
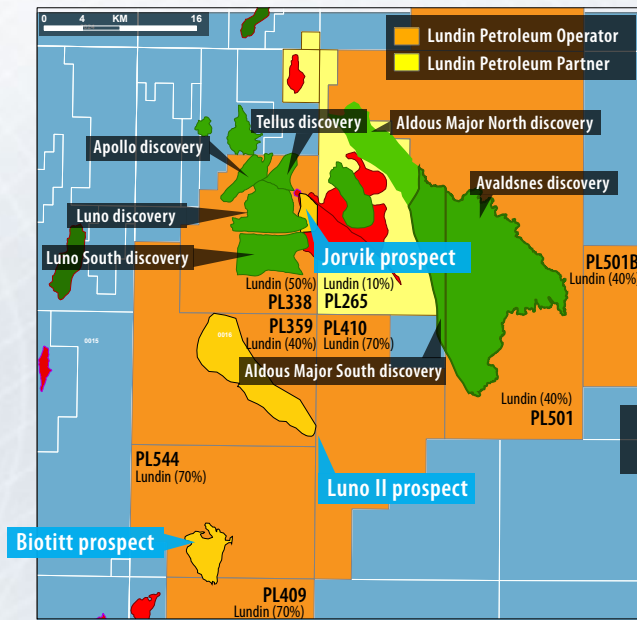
Greater Luno Area & the Southern Utsira High



2012 Exploration Drilling

➔ PL359 (Lundin 40% operated) Luno II prospect

- ➔ Avaldsnes play type
- ➔ Reservoir: Upper Jurassic
- ➔ Gross unrisked prospective resources: 139 MMboe



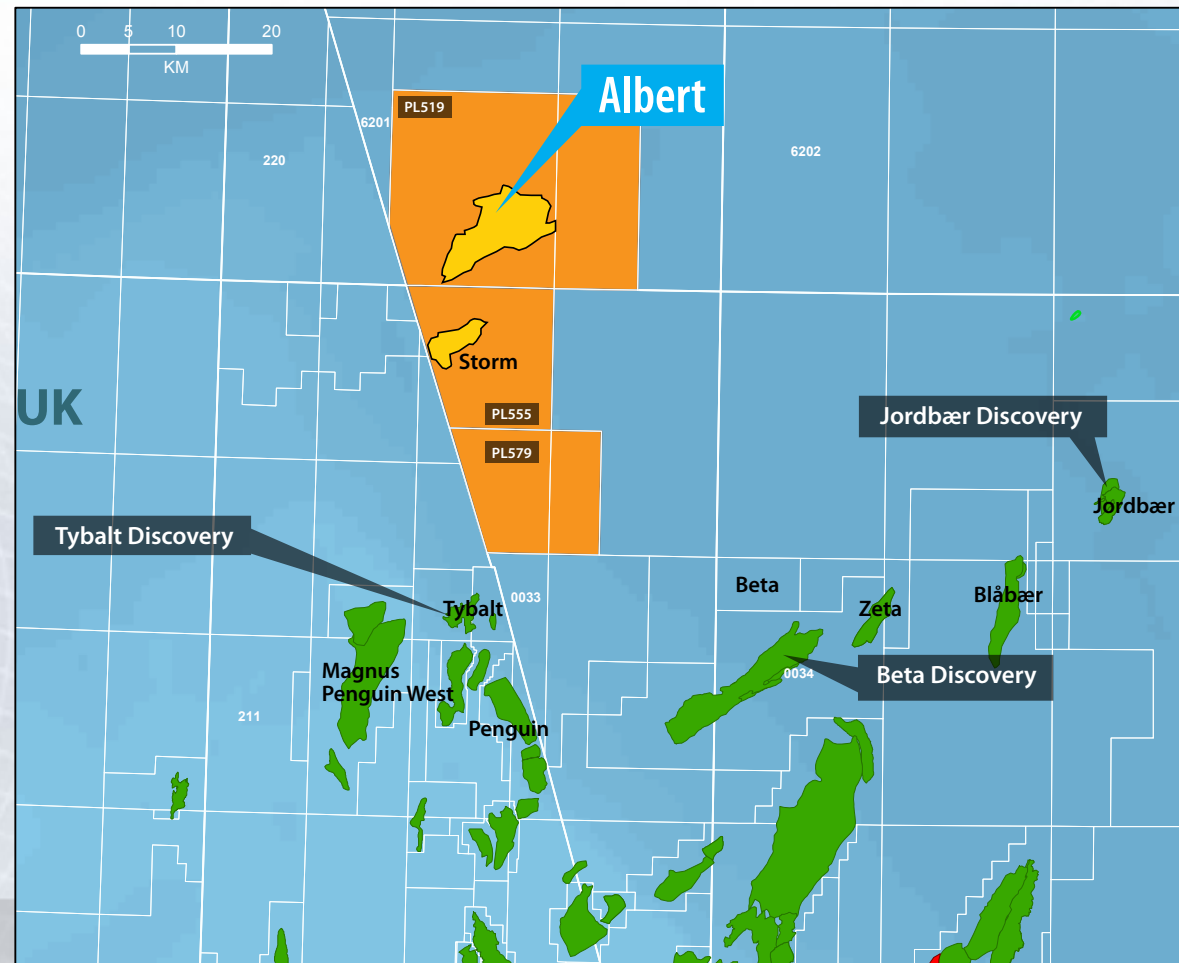
More Basin Area - A New "Core" Area



2012 Exploration Drilling

- **PL519 (Lundin 40% operated)**
Albert prospect
➔ Gross unrisked prospective resources: 177 MMboe
- **Further prospectivity identified for 2013 drilling campaign**
➔ Storm prospect

- Lundin operated block
- PL519 Lundin 40% (Operator)
- PL555 Lundin 60% (Operator)
- PL579 Lundin 50% (Operator)

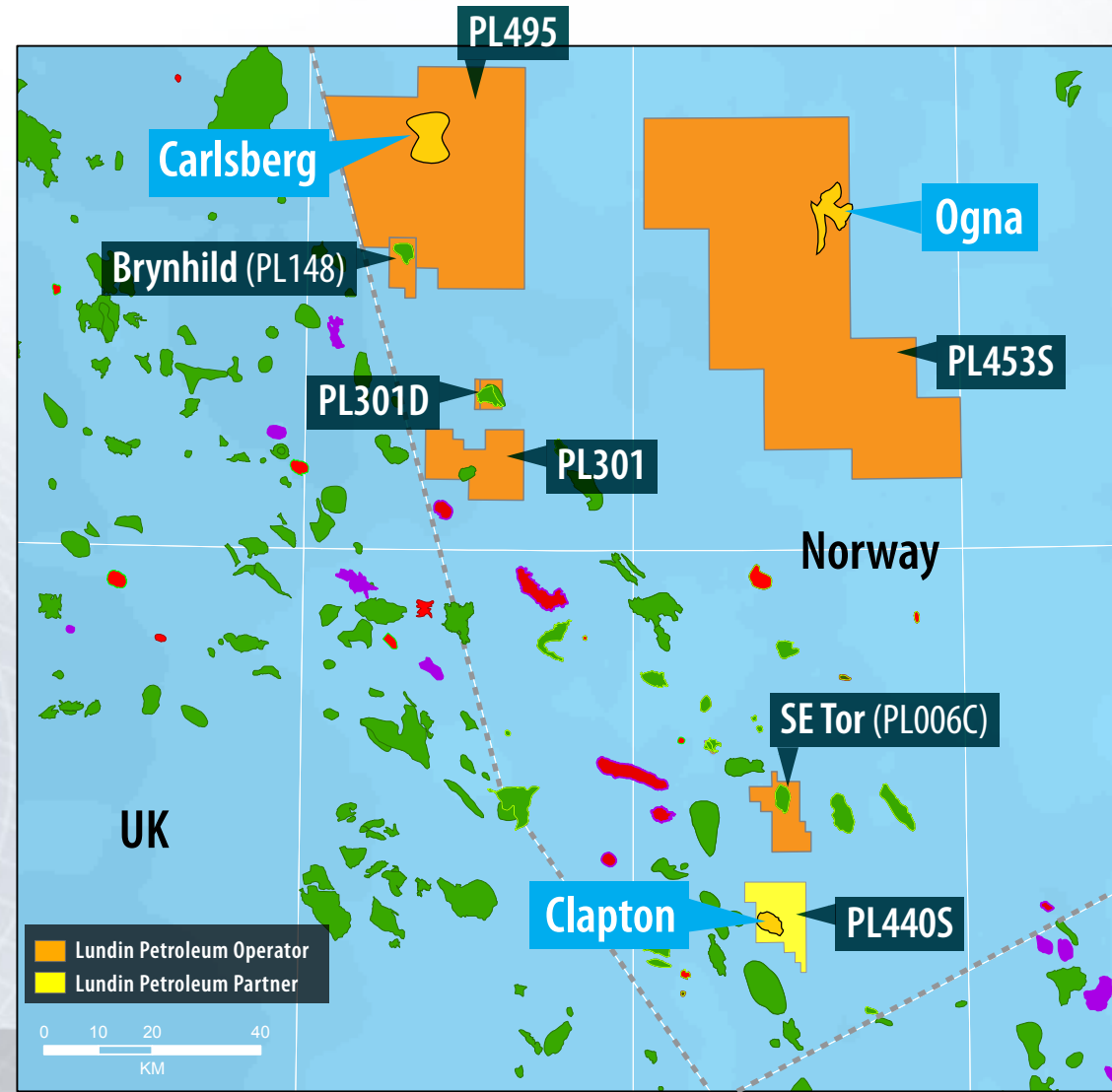


Quadrant 8 Area



2012 Exploration Drilling

- **PL495 (Lundin 60% operated)**
Carlsberg prospect
 → Gross unrisks prospective resources: 67 MMboe (2 levels)
 - **PL453 (Lundin 35% operated)**
Ogna prospect
 → Gross unrisks prospective resources: 156 MMboe
 - **PL440S (Lundin 18%)**
Clapton prospect
 → Gross unrisks prospective resources: 65 MMboe
- ⇒ **Targetting a total of 106.5 MMboe net unrisks prospective resources**



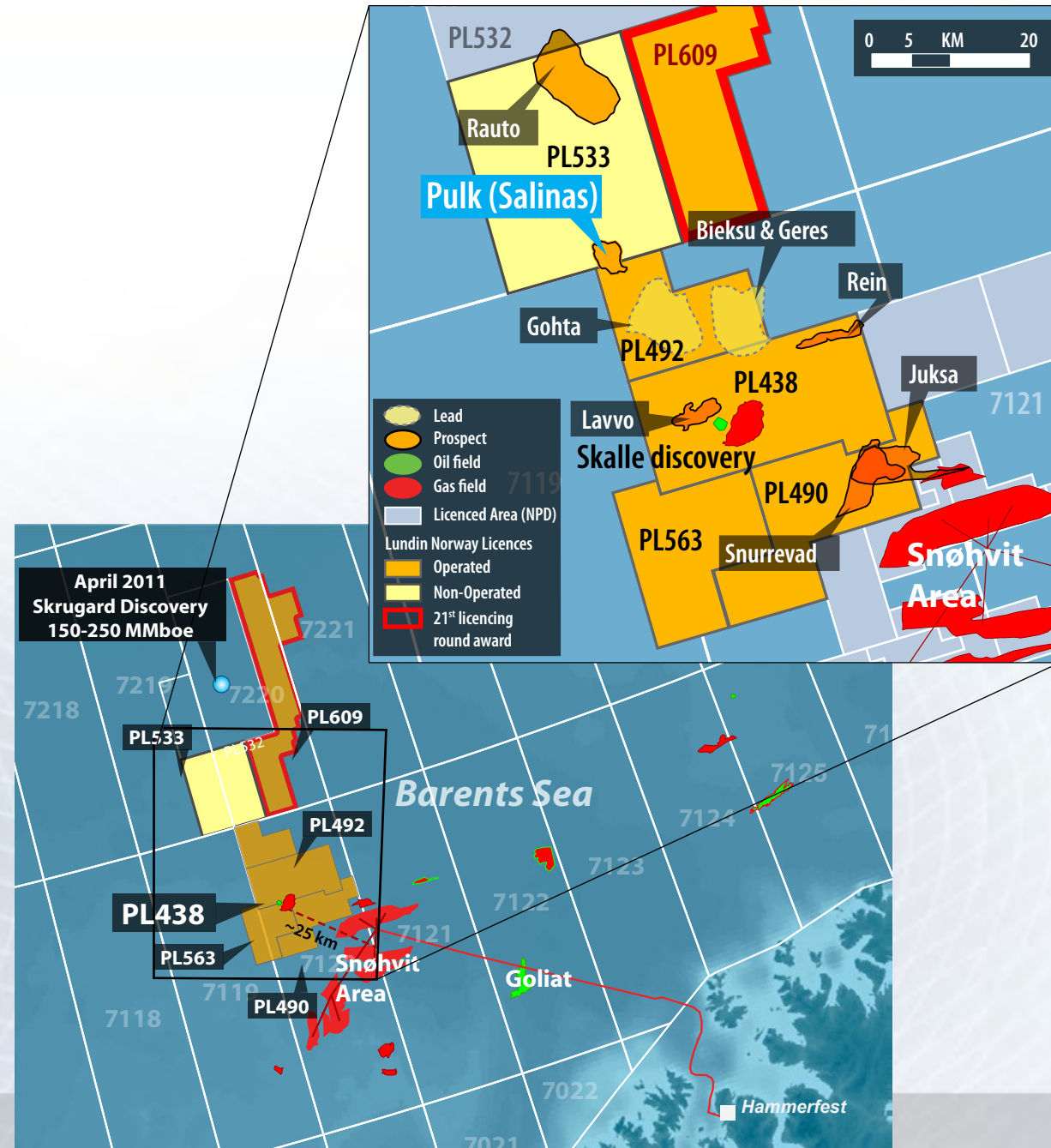
Barents Sea Area



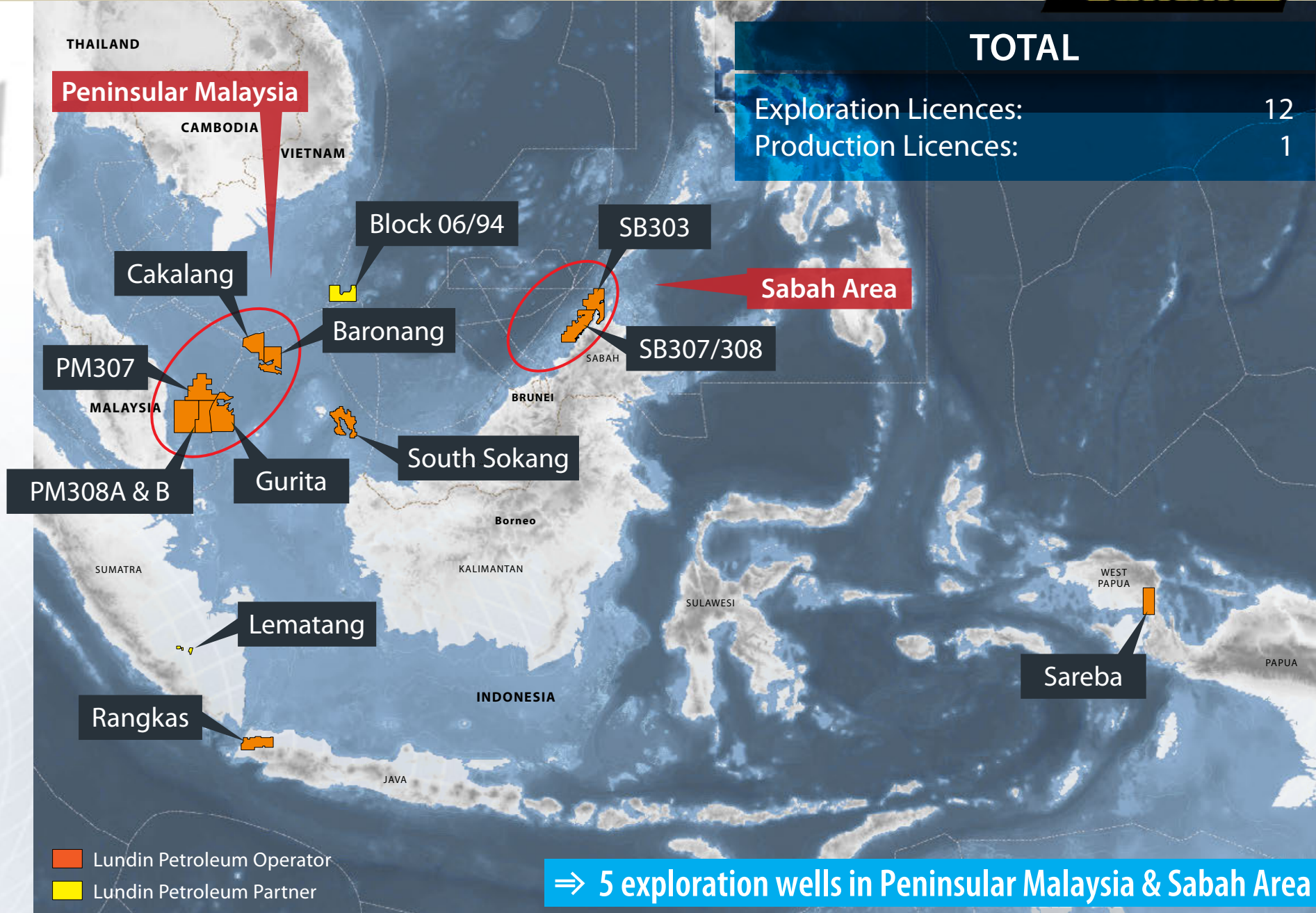
2012 Exploration Drilling

- **PL533 (Lundin 20%)**
Pulk (Salinas) prospect
 - ➔ Gross unrisked prospective resources: 500 MMboe
 - ➔ On trend with "Skrugard" discovery play type

- **Further drilling in 2013 in PL490**



South East Asia - 2012 Exploration Drilling

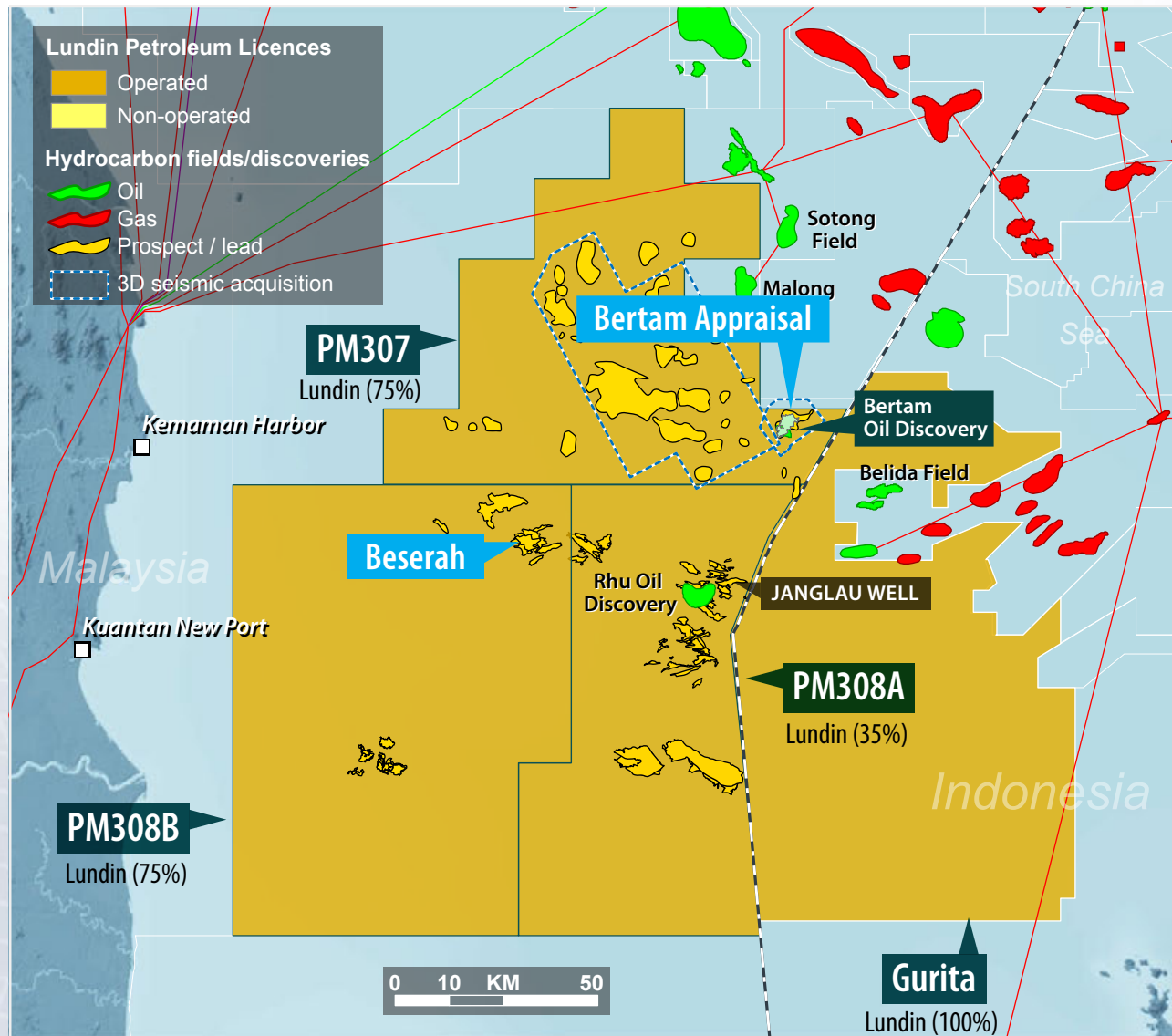


Peninsular Malaysia



2011/2012 Drilling Campaign

- **PM307 (Lundin 75% operated)**
Bertam appraisal
- **PM308B (Lundin 75% operated)**
Beserah prospect
→ Gross unrisked prospective resources: 46 MMboe
- **PM308A (Lundin 35% operated)**
→ 2 exploration wells
→ Final location to be determined



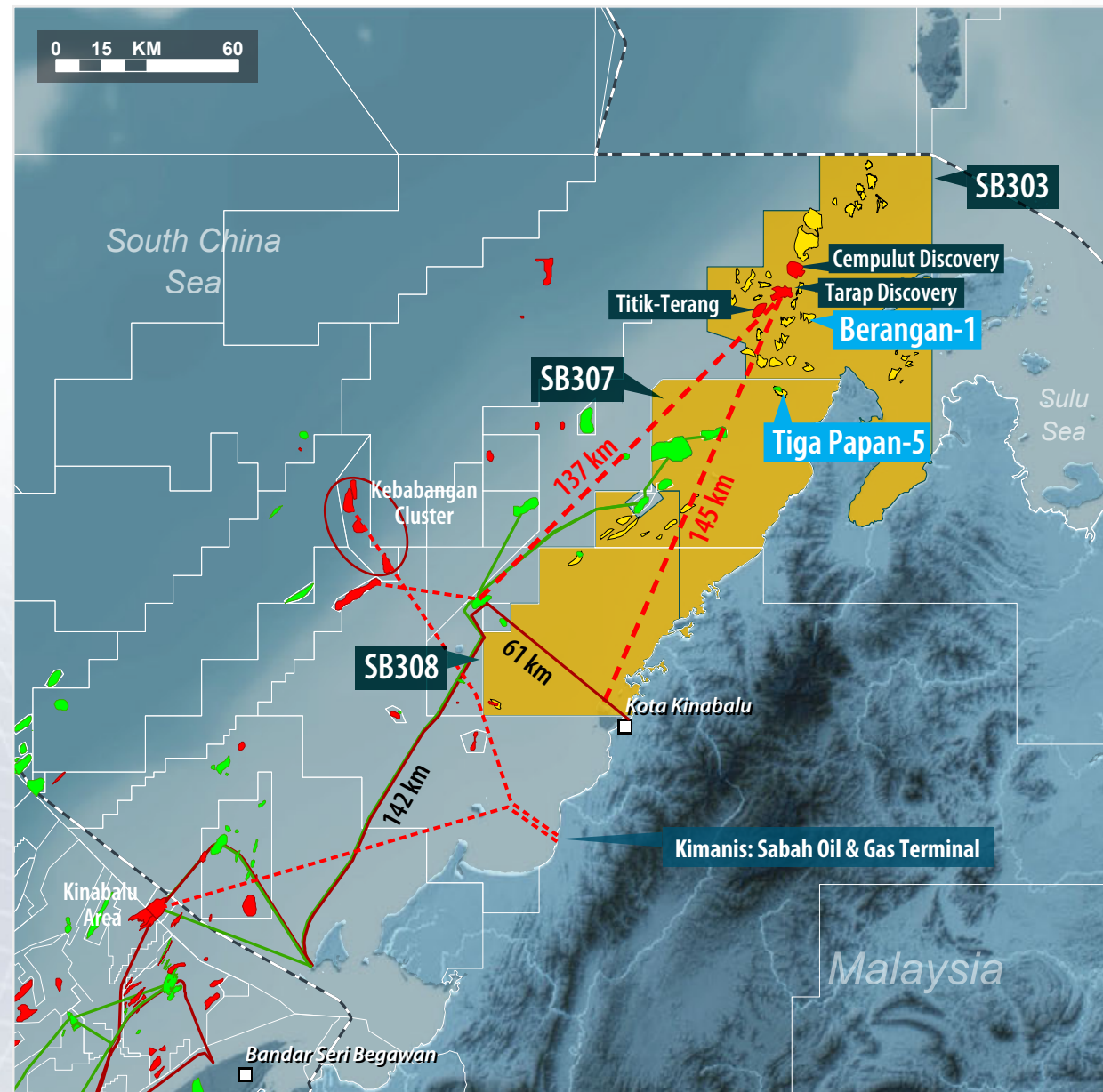
Malaysia - Sabah Area



- ➔ Tarap/Cempulut discoveries in 2011 + Titik-Terang discovery. Gross contingent resources >250 bcf. Potential cluster development.

2012 Drilling Campaign

- ➔ SB307/308 (Lundin 42.5% operated)
 - Tiga Papan-5 prospect
 - ➔ Gross unrisks prospective resources: 21 MMboe
 - ➔ Existing discovery
- ➔ SB303 (Lundin 75% operated)
 - Berangan prospect
 - ➔ Gross unrisks prospective resources: 28 MMboe



2011 - 2012 Drilling Schedule



Country	Licence - Prospect	Operator	LUPE%	NUPR ⁽¹⁾	CoS %	NRPR ⁽³⁾	2011	2012				
							Q4	Q1	Q2	Q3	Q4	
1 Norway	PL265 - Aldous MS App. 16/2-10	Statoil	10.00	–	–	–	Discovery					
2 Norway	PL501 - Avalsnes 16/5-2 App.	Lundin	40.00	–	–	–						
3 Norway	PL501 - Avalsnes 16/2-11 App.	Lundin	40.00	–	–	–						
4 Norway	PL501 - Avalsnes 16/2-12 App.	Lundin	40.00	–	–	–						
5 Norway	PL519 - Albert 6201/11-3	Lundin	40.00	71	26%	18						
6 Norway	PL501 - Avalsnes 16/5-3 App.	Lundin	40.00	–	–	–						
7 Norway	PL359 - Luno II	Lundin	40.00	56	35%	19						
8 Norway	PL338 - Jorvik	Lundin	50.00	23	49%	11						
9 Norway	PL544 - Biotitt	Lundin	70.00	87	29%	25						
10 Norway	PL453 - Oгна	Lundin	35.00	55	22%	12						
11 Norway	PL495 - Carlsberg	Lundin	60.00	40	15-24%	9						
12 Norway	PL338 - Apollo App.	Lundin	50.00	–	–	–						
13 Norway	PL533 - Pulk	ENI	20.00	102	14-19%	15						
14 Norway	PL440S - Clapton	Faroe	18.00	12	29%	3						
15 Malaysia	PM308A - PM308A-B (Janglau)	Lundin	35.00	9	24%	2	Ongoing					
16 Malaysia	PM307 - Bertam App.	Lundin	75.00	–	–	–						
17 Malaysia	SB307/308 - Tiga Papan-5	Lundin	42.50	9	50%	4						
18 Malaysia	SB303 - Berangan-1	Lundin	75.00	21	23%	5						
19 Malaysia	PM308B - Beserah-1	Lundin	75.00	35	24%	8						
20 Malaysia	PM308A - PM308A-3	Lundin	35.00	– ⁽²⁾	– ⁽²⁾	– ⁽²⁾						
21 Malaysia	PM308A - PM308A-4	Lundin	35.00	– ⁽²⁾	– ⁽²⁾	– ⁽²⁾						
22 France	Val des Marais - Pierre Morains	Lundin	100.00	2	50%	1						
23 France	East Champagne - Contault	Lundin	100.00	9	27%	2						
24 France	East Champagne - Nettancourt	Lundin	100.00	14	29-35%	5						
25 Congo (Brazzaville)	Block Marine XI - Mindu Marine	SOCO	18.75	21	–	–	Dry					
26 Congo (Brazzaville)	Block Marine XIV - Makouala	SOCO	21.55	8	32%	2						
27 Congo (Brazzaville)	Block Marine XI - Lideka East	SOCO	18.75	12	23%	3						
			operated	non operated	586	144						

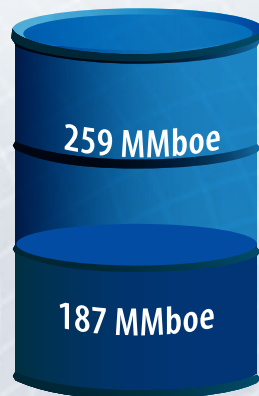
⁽¹⁾ Net Unrisked Prospective Resources (MMboe) ⁽²⁾ Awaiting completion of ongoing prospect analysis and results of current well ⁽³⁾ Net Risked Prospective Resources (MMboe)

Netherlands 3 exploration wells not included

Reserves and Resources Increase

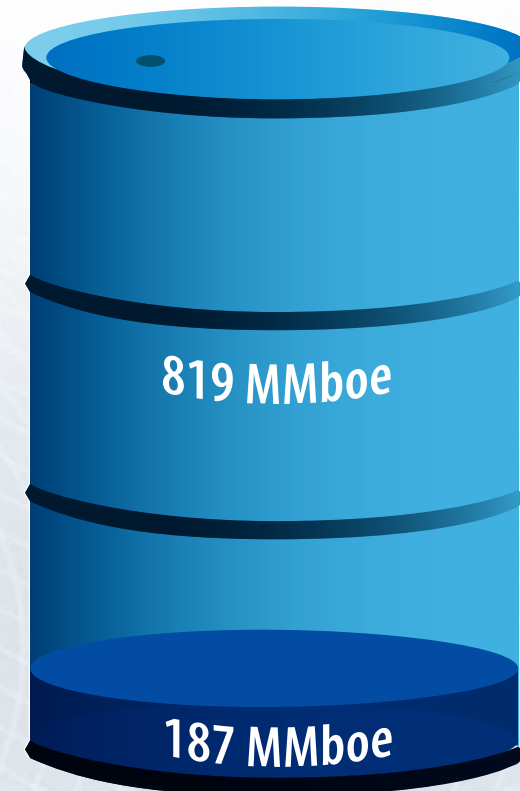


End 2010
Reserves & Contingent Resources



446 MMboe

End 2010 Reserves & Contingent Resources
+
Avaldsnes & Aldous Major South ⁽¹⁾
mid case net contingent resources



1006 MMboe

- **Strong production and cashflow**
- **Development programme. Production to double in 5 years**
- **Avaldsnes - a new giant oil field in Norway**
- **Major exploration/appraisal programme in 2012**

Financial Presentation - First Nine Months 2011



WWW.LUNDIN-PETROLEUM.COM