

*Lundin Petroleum - United Kingdom*

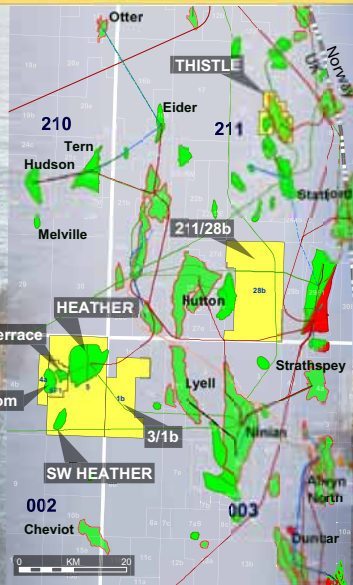
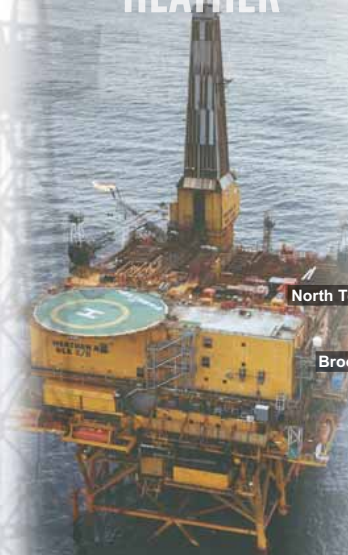


*Capital Market Day Presentation  
30th January 2007*

# UK Northern North Sea Asset Location



## HEATHER



## THISTLE



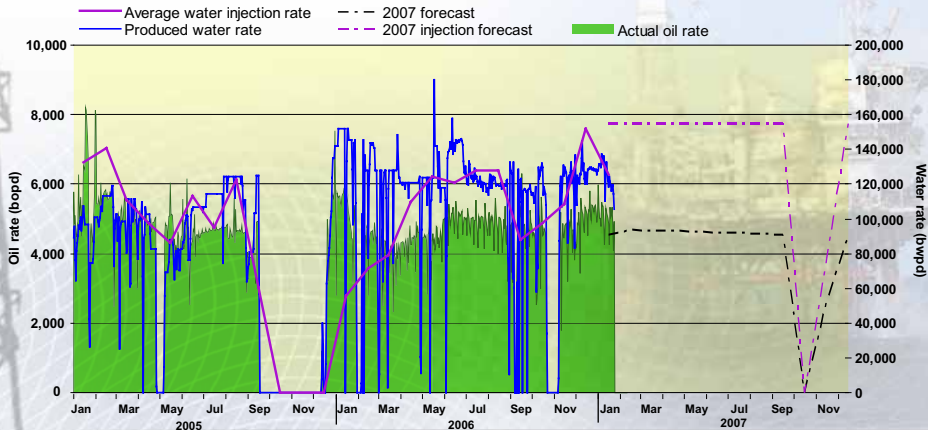
Heather Platform is located 390 km NE of Aberdeen

Thistle Platform is located 75 km NE of Heather

## Thistle 2005 to 2007 - Improving Performance



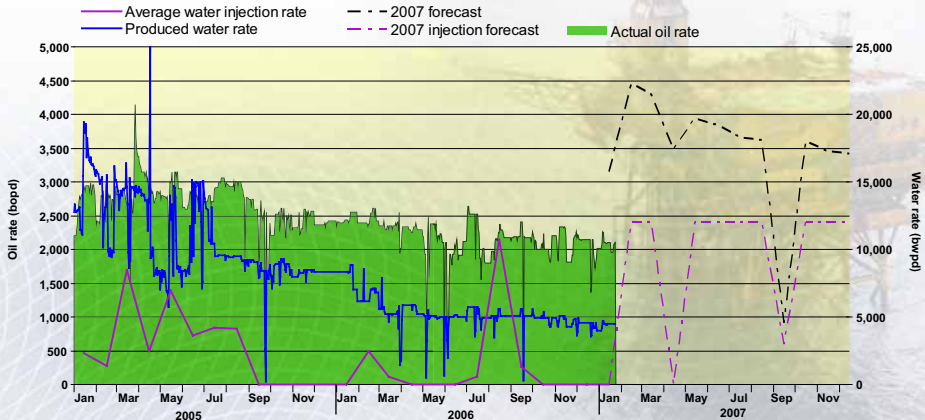
- ✓ Plant stability investment
- ✓ Water injection capability now in excess of 150,000 bwpd
- ✓ Power generation reliability
- ✓ Increasing oil production



## Heather 2005 to 2007 - Improving Performance



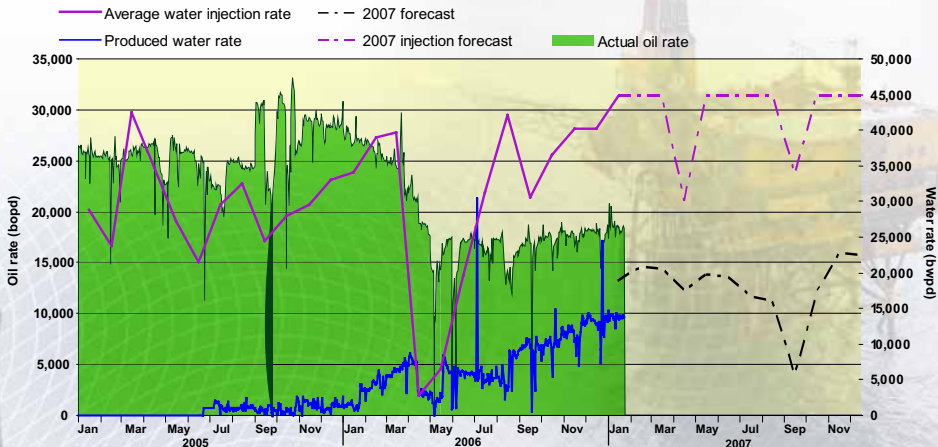
- Plant stability investment
- Water injection capacity now in excess of 55,000 bwpd
- Heather injection shut in during Triassic drilling
- Process uptime



## Broom 2005 to 2007 - Improving Performance



- Recovery from April low
- Stable water injection at 45,000 bwpd
- Oil production ahead of forecast



# Thistle Redevelopment



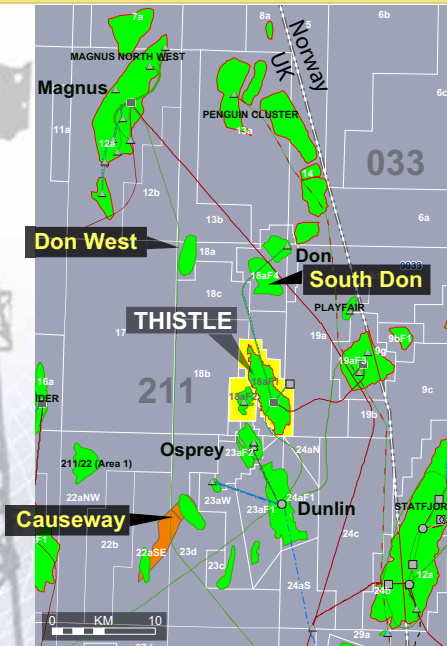
### Value Creation

- 409 MMboe produced – STOIP 846 MMboe
- No drilling since 1990
- No active reservoir management since 1990's
- Water injection critical
- Lundin Petroleum commitment to Thistle regeneration in May 2006
- Contingent Resources assumes 2.5% recovery increase from infill and workovers

### Ongoing Projects

- 3D seismic
- Rig reactivation
- Direct oil export
- Process debottlenecking

# Thistle Redevelopment - Potential Third Party Business



## West Don

- Subsea tie back
- Active tariff negotiations
- Targeting late 2008/ early 2009 first oil

## South Don

- Subsea tie back
- Scoping tariff discussions
- Potential fast track development through existing subsea facilities

## Causeway

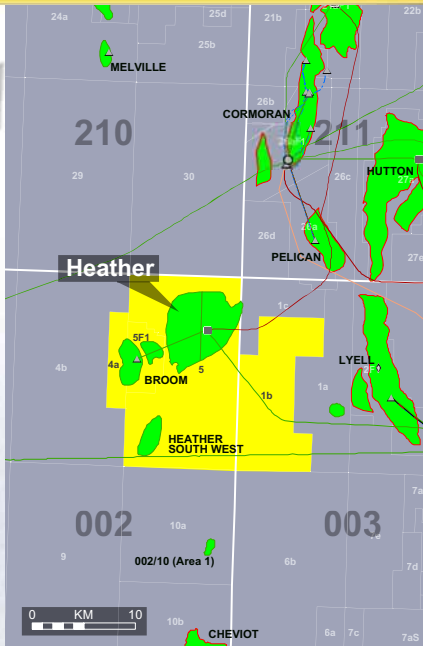
- Prospective tie back
- Exploratory discussions with owners
- Substantial appraisal program in 2007

**Combined Potential Resource of up to 100 MMboe**



- **Ongoing redevelopment investment**
- **Subsurface detective work with existing data**
- **2007 seismic shoot**
- **2007/8 revamp of Thistle reservoir model**
- **Reactivation of drilling package**
- **Preparing for 2008 workover program followed by extensive redrill campaign**
- **Capturing West Don, South Don and Causeway third party business**

# Heather - Development and Production Hub



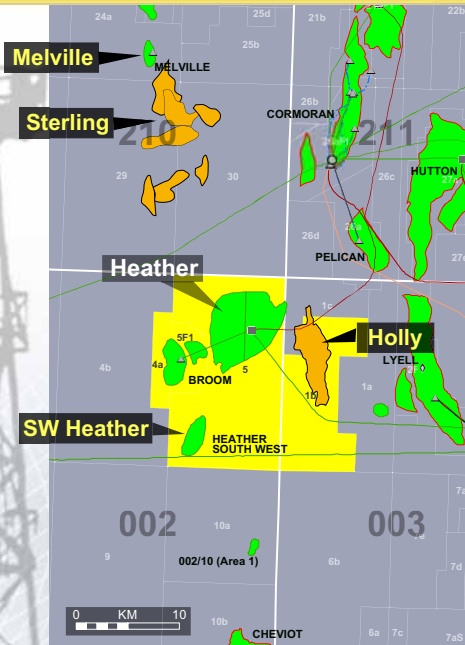
## **Value Creation**

- 131 MMboe produced – STOIP 507 MMboe
- Broom host
- Drilling facilities reactivated
- Life extension investment
- Greater Heather area 3D seismic shot in 2006

## **Ongoing Projects**

- Triassic drilling
- Seismic interpretation
- Control room upgrade

## Heather – Development and Production Hub



### South West Heather (CR) – Lundin Petroleum 55%

- Brent reservoir tested at 5 Mbopd
- Reserves range 6/12/22 MMboe
- Generate development plan in 2007

### Holly Prospect – Lundin Petroleum 100%

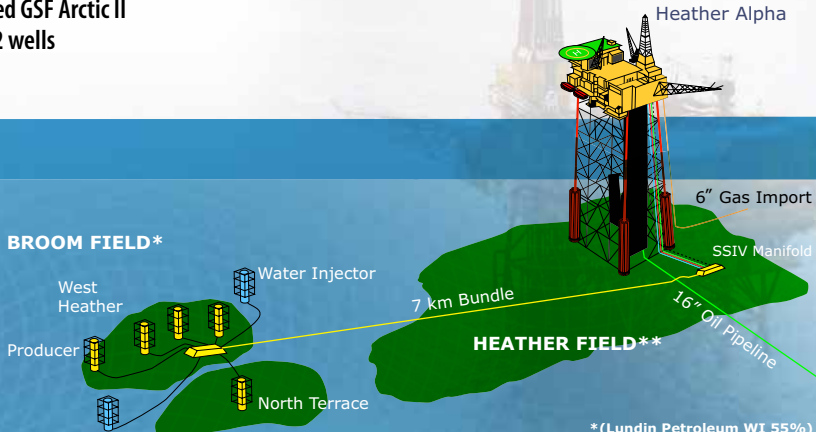
- Paleocene
- Subsea tie back to Heather
- Unrisked resource range 22/39/96 MMboe
- 2007 technical work program and drilling decision

### Potential Third Party Tie Backs

- Sterling – 210/29 & 210/30
- Melville – 210/24

- **Ongoing life extension investment**
- **Subsurface detective work integrating new 3D seismic**
- **2007 revamp of Heather reservoir model**
- **Generating Heather infill candidates**
- **Preparing for 2008 workover program and subsequent extensive drilling campaign**
- **Generating field development plan for SW Heather**
- **Capture Sterling operated and Melville third party business**

- First oil August 2004
- 20 MMbbls produced
- 3D seismic shot in 2006
- Contracted GSF Arctic II for next 2 wells

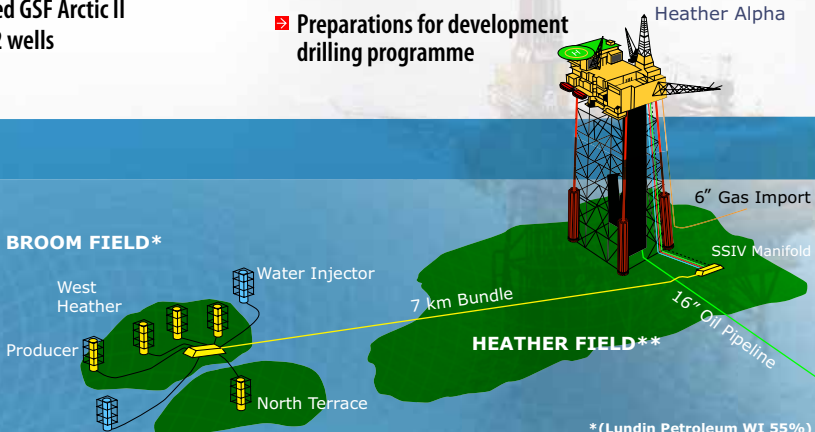


\*(Lundin Petroleum WI 55%)  
\*\*(Lundin Petroleum WI 100%)

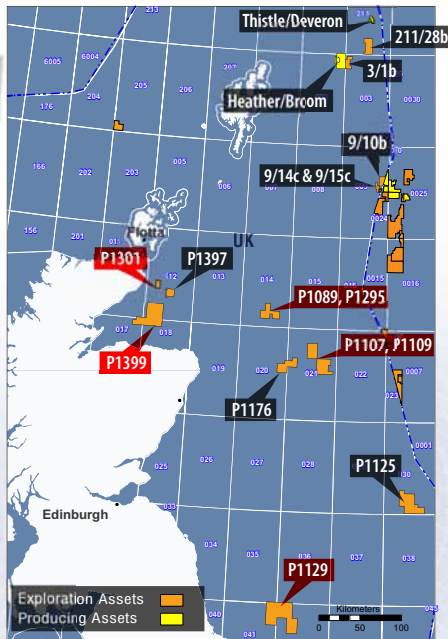
- First oil August 2004
- 20 MMbbls produced
- 3D seismic shot in 2006
- Contracted GSF Arctic II for next 2 wells

### Ongoing Projects

- 2007 revamp of Broom reservoir model integrating new seismic
- Installation of water handling equipment on Heather
- Preparations for development drilling programme



\*(Lundin Petroleum WI 55%)  
 \*\*(Lundin Petroleum WI 100%)



## 2007 Drilling Activity

- 12/17b Lundin Petroleum (P1301)
- 12/27 Endeavour (P1399)
- 14/28a OilExCo (P1089,P1295)
- 21/8 Lundin Petroleum (P1107,P1109)
- 41/10 Lundin Petroleum (P1129)

## Long Term Activity

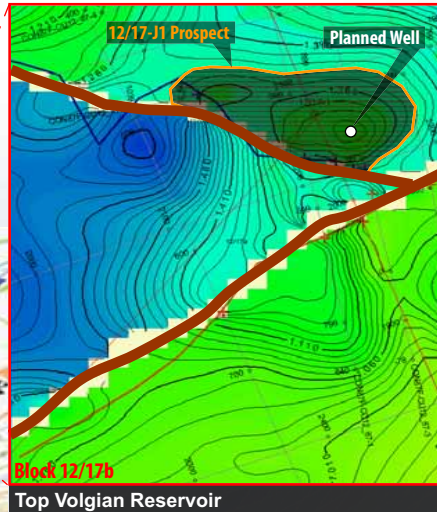
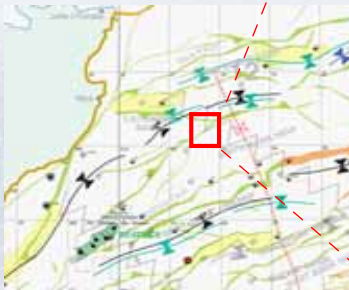
- 211/28b Lundin Petroleum
- 3/1b Lundin Petroleum
- 9/10b,14c,15b
- 12/23a Endeavour (P1397)
- 20/15b, 21/11c Endeavour (P1176)
- Q30 Lundin Petroleum (P1125)

## 24th Licence Round

- Applied for new licences

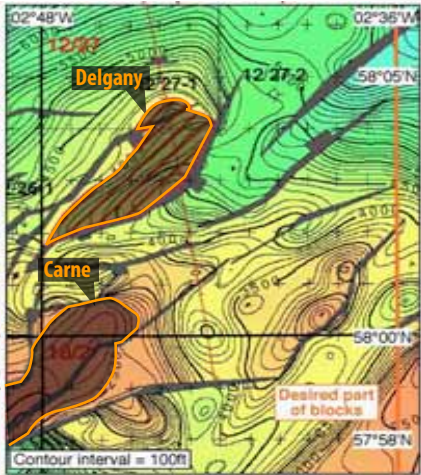
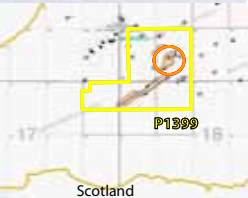
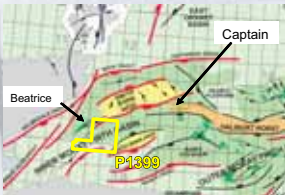


- Gross Resources: 40 MMboe  
12/17-J1
- LundinPetroleum interest: 30%
- Operator: Lundin Petroleum
- Drilling Date: 3/4Q 2007



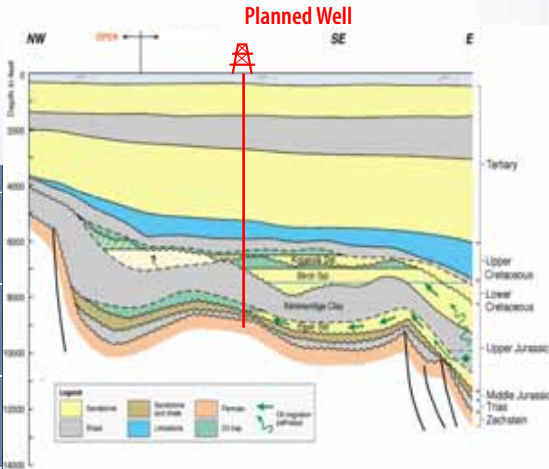
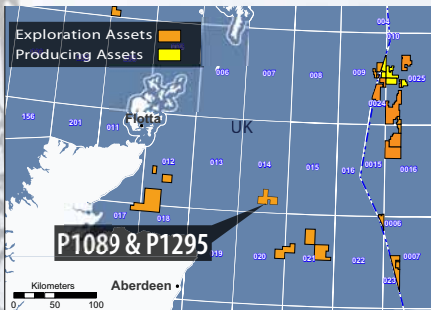
- **Gross Resources:** 821 Bcf
  - ➔ Delgany 444
  - ➔ Wenvoe 100
  - ➔ Southerndown 166
  - ➔ Carne 70
  - ➔ Cruit 41

- **Lundin Petroleum interest:** 15%
- **Operator:** Endeavour
- **Drilling Date:** 3Q 2007

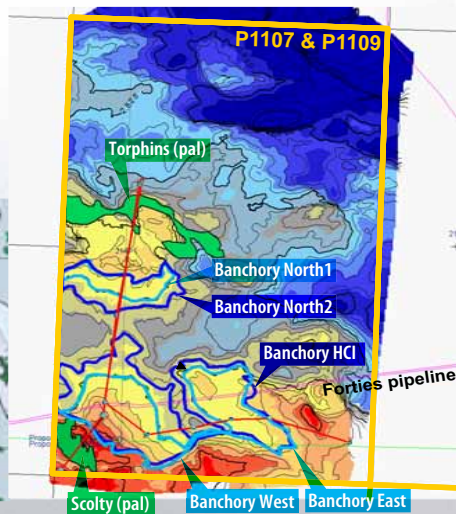
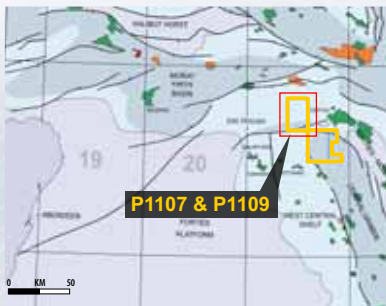


Top Triassic Depth Map (ft)

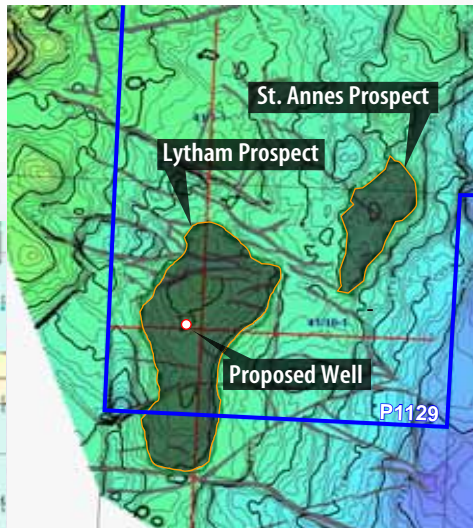
- **Gross Resources:** 408 MMboe
  - ➔ Birch/Kopervik 384
  - ➔ Piper 24
  
- **Lundin Petroleum interest:** 10%
- **Operator:** OilExCo
- **Drilling Date:** 1Q 2007



- **Gross Resources:** 145 MMboe
  - ➔ Banchory 41
  - ➔ Banchory East 27
  - ➔ Banchory North 23
  - ➔ Scolty 10
  - ➔ Torphins 28
  - ➔ Belfry 16
- **Lundin Petroleum interest:** 40%
- **Operator:** Lundin Petroleum
- **Drilling Date:** 4Q 2007



- **Gross Resources:** 762Bcf
  - ➔ Lytham 295
  - ➔ Haupt 93
  - ➔ St. Annes 164
  - ➔ String Of Pearls 210
  
- **Lundin Petroleum interest:** 25%
- **Operator:** Lundin Petroleum
- **Drilling Date:** 3Q 2007








# UK Exploration Drilling Schedule 2007



UK 

Likely Drilling Schedule 2007

Country	Licence	Net Interest	Operator	Q1	Q2	Q3	Q4
UK	P1399	15%	Endeavour				
	P1129	25%	Lundin				
	P1301	30%	Lundin				
	P1109 & P1107	40%	Lundin				
	P1089 & P1295	10%	OilExCo				

**2007 Wells**

Licence	Block	Equity	Operator
P1301	12/17b	30	Lundin Petroleum
P1399	12/27	15	Endeavour
P1089 & P1295	14/28a	10	OilExCo
P1107 & P1109	21/8	40	Lundin Petroleum
P1129	41/10	25	Lundin Petroleum

- 58 MUSD budgeted for 2007
- Net prospective resource of 100 MMboe unrisks and 25 MMboe risks