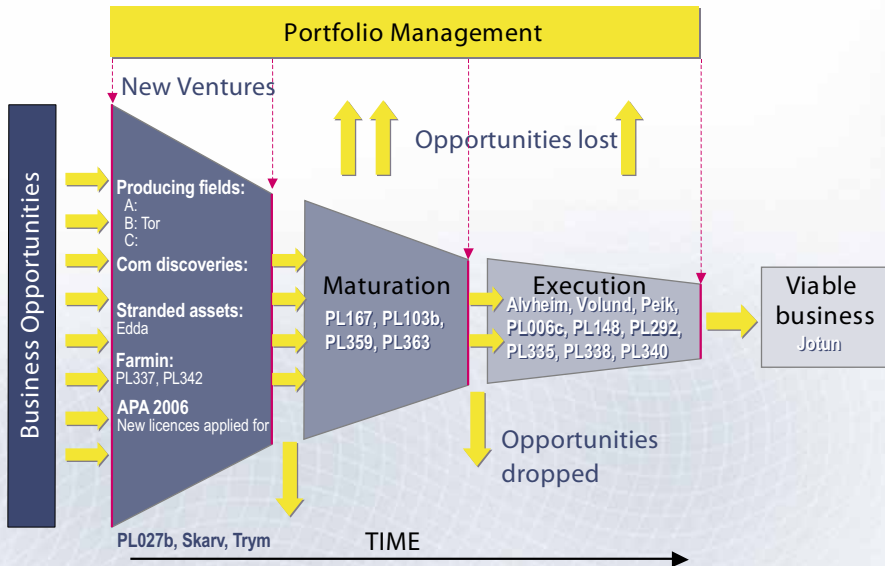


Lundin Petroleum Norway - NCS Portfolio

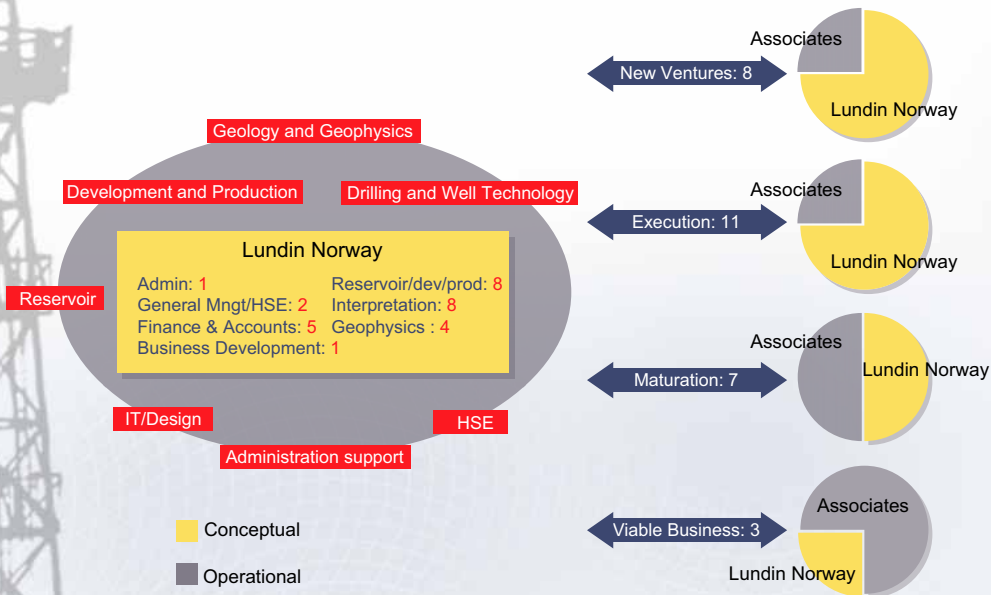
Lundin



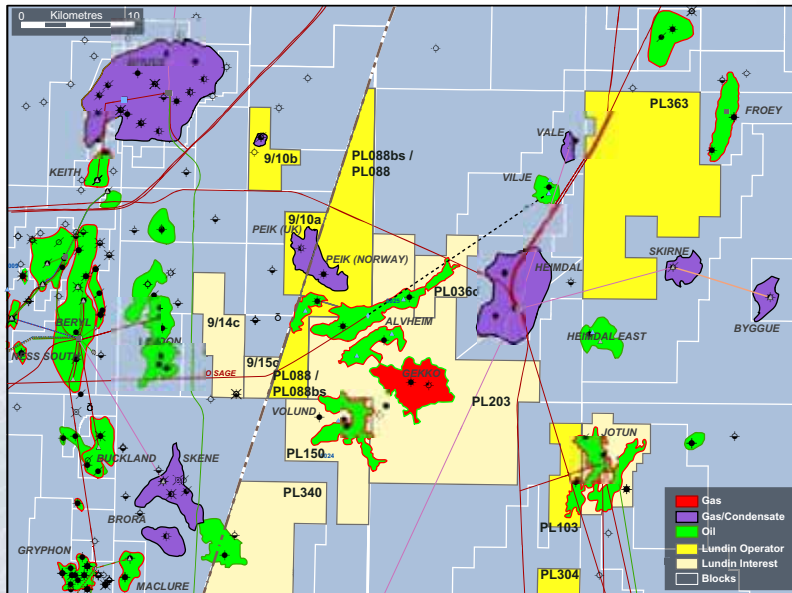
*Capital Market Day Presentation
30th January 2007*



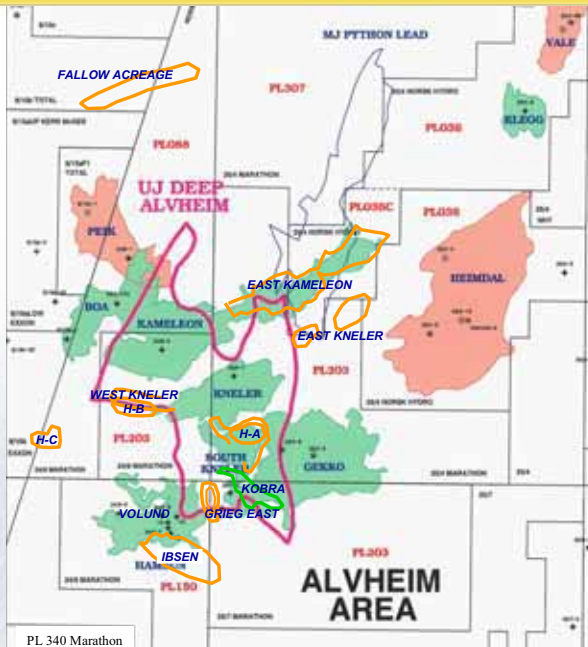
Concept and Operational Network



Alvheim Core Area



Alvheim - Volund Area - Resources



- **Alvheim Field (15%):**
Boa, Kameleon, Kneler
- **Volund Field (35%)**
- **Contingent Resources:**
East Kameleon branch wells
Gekko
Kobra
- **Prospective Resources:**
South Kneler
Alvheim Deep
Hermod A
East Kneler
West Kneler + H-B
Python
Grieg East + Ibsen N (35%)
Ibsen(35%)
- **PL 340(15%)**

Alvheim

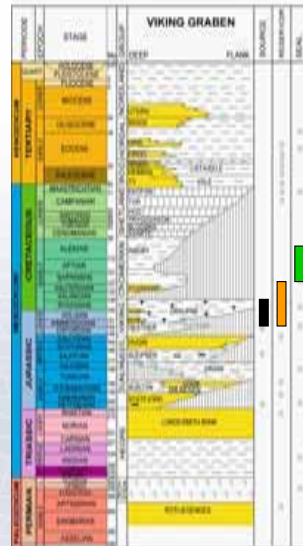
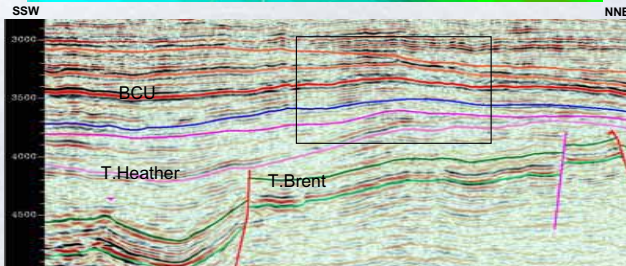
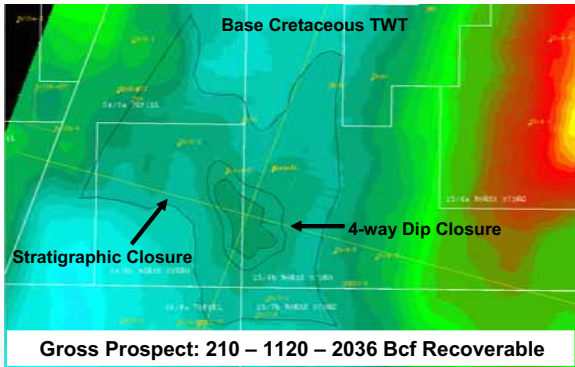
Lundin

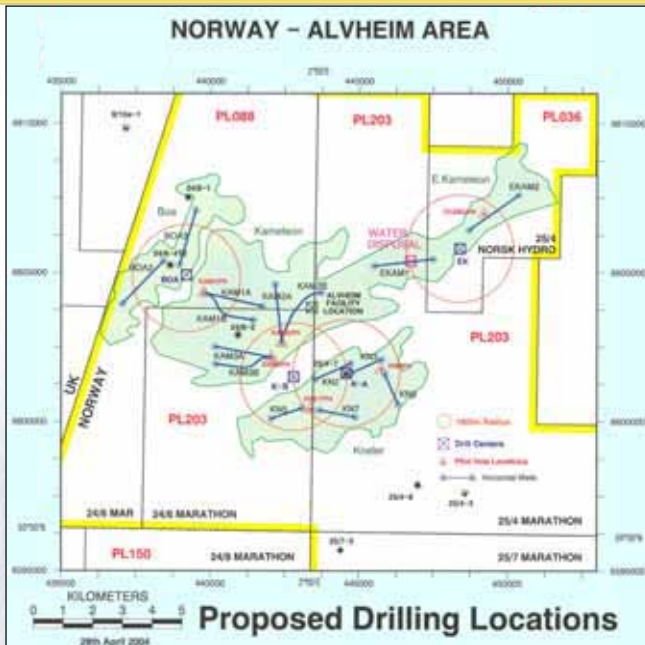


Subsea Installation

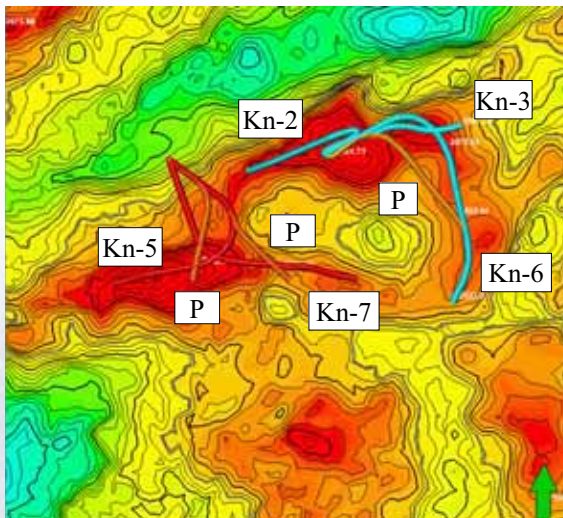
- Subsea installation finished except wells tie-in to manifolds
- Diving vessel secured for campaign in 1Q before First Oil (Technip)
- Buoy installed offshore and ready for hook up into turret







- 13 Production Wells (5 Multi-Laterals)
- 2 Water Disposal Wells
- 5 Drill Centres (incl water disposal)
- Pilot holes
- Increased branch wells since PDO from 3 to 5 and more pilot holes



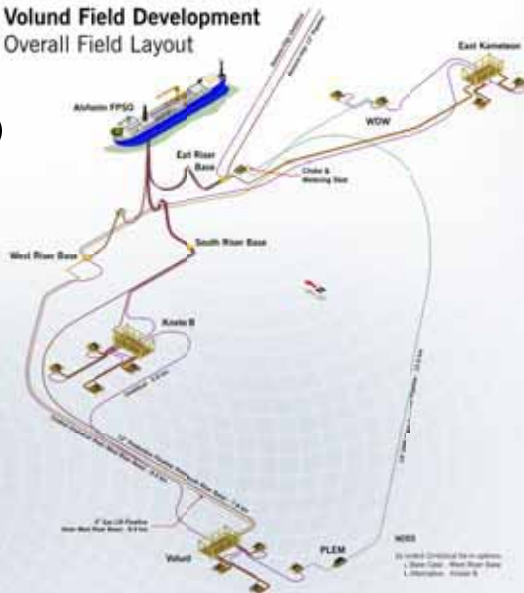
KNELER			
	2	3	6

- | | | | |
|---|--|------|------|
| ➤ Tot.Length | 1337 | 1258 | 1756 |
| Net Length | 1176 | 1148 | 1474 |
| ➤ N/G | 88% | 93% | 87% |
| ➤ Av.Por | 26% | 24% | 27% |
| ➤ Stand off | 34m | 29m | 21m |
| ➤ Pilot Kn5: | Lower N/G than prognosis
Deeper OWC than Exploration well | | |
| ➤ Pilot Kn7: | N/G as expected
Deeper OWC | | |
| ➤ Decision is made to drill Kn7 as the 4th producer | | | |

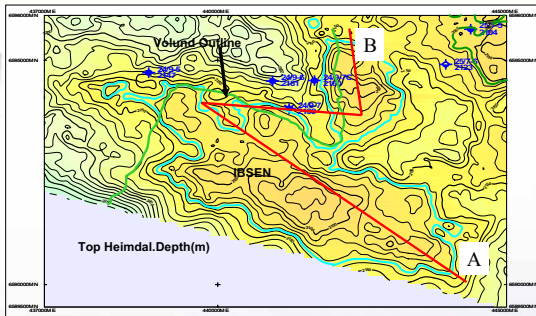
- Operator Marathon
- Lundin Petroleum interest 35%
- The PDO approved by "King in council"
- Estimated Capex NOK 2.8 billion (gross) for Volund
- Contracts awarded and drilling rig secured
- First oil estimated to 2Q 2009

- Subsea development
- Four slots manifold same as Alvheim
- 3 oil producers
- Water injection
- One production riser
- Some topside installation

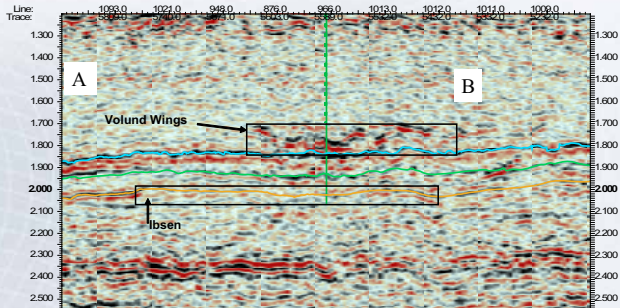
Volund Field Development
Overall Field Layout



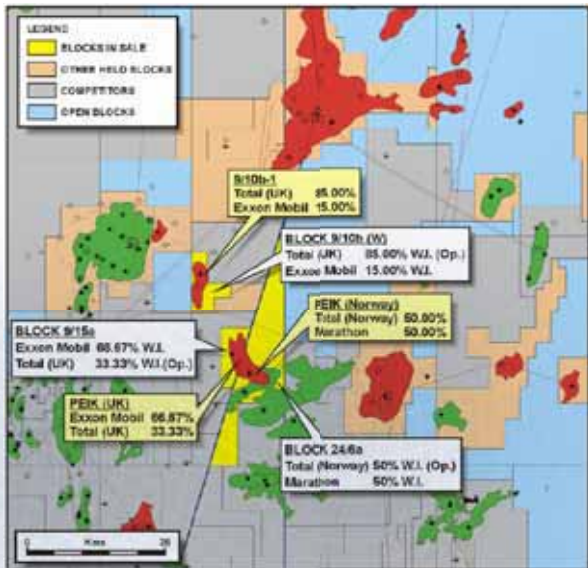
Ibsen Prospect - PL150

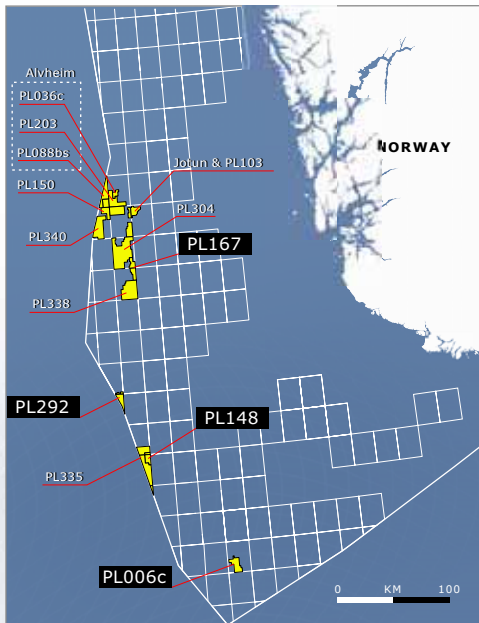


➤ Potential gross prospect resource:
47 MMbbl



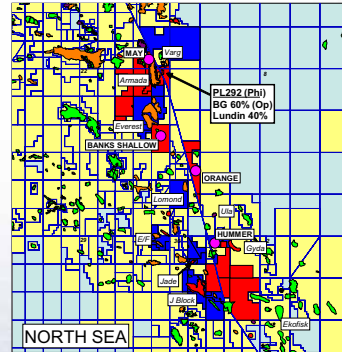
- 50% of NCS Block 24/6a
- 33.3% of UK Block 9/15a and b
- 85 % of UK Block 9/10b West
- Operated by Lundin Petroleum
- Deep Jurassic HTHP reservoir





Contingent Resources	MMboe
Alvh. Gekko (CR)	4,4
Alvh. EastKam (CR)	0,6
Alvh. Kobra (CR)	0,3
PL340 (CR)	1,6
PL167 (CR)	1,2
PL292 (CR)	4,4
PL148 (CR)	10,3
PL006c (CR)	16,9
Total Norway	39,7

- **PL 292: BG operator 60% , Lundin Petroleum 40%**
- **Licence obligation to drill exploration well within 2008 (NPD approved 1 year extension due to rig delay)**
- **BG has option to increase to 70% prior to drilling**
- **Discovery 6/3-1Phi South part of potentially larger structure Phi**
 - ➔ **Gas in Middle Jurassic Sleipner Fm.**
 - ➔ **Gas and oil in Triassic Skagerak Fm.**
 - ➔ **Normal pressure 371 bar and temperature 131C @ 3km SS**
- **Contingent resources Phi South 10.9 MMboe (net Lundin Petroleum 4.4)**
- **Mærsk Guardian rig to drill Phi North 15/12-x in Q3 2007 to prove upside reserves of 20 MMboe of Phi total**



- 7/7-2 Statoil 1992, oil down to
 - DST 5000 bbl/d, 36 API,
 - Pressure 626 bar @3310 m SS

- 7/7-3 Statoil 1993, only shows (water up to)

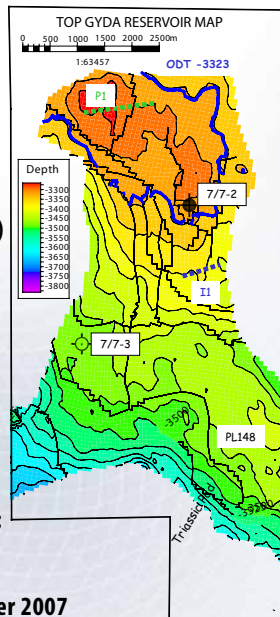
- Contingent resources 20.6 MMboe (10.3 net Lundin Petroleum)

- Review of economic cost feasibility for project sanction
 - Development costs (latest marked increase)
 - Tie in point/distance/commercial issues
 - Upside volumes 38 MMboe

- Potential optimizations
 - Area synergies, reuse appraisal well, phased development

- Planned appraisal well position to prove up significant upside:
 - OWC, reservoir thickness/quality

- Mærsk Guardian rig is secured for drilling in September/October 2007

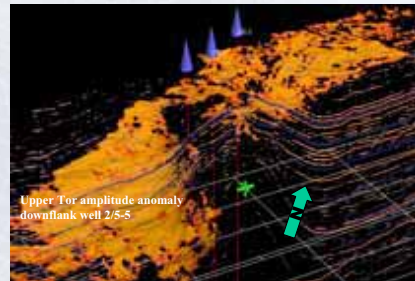
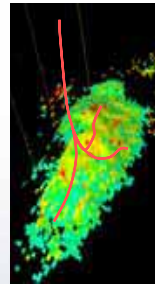


PL006c - South East Tor

- Lundin Petroleum 75%, Noreco 25%
(Noreco carries 220MNOK from 1/1-2006)
- Discovery well 2/5-3 tested ~4500 bbl/d
in two intervals
- Large span in ST00IP and reserves
- License decision to drill appraisal well
- Rig swap Songa Dee – Maersk Guardian
contract being signed late February 2007
- Most likely spud is Q1 2008

Gross volumes	Most likely	Upside potential
MMboe	22.5	46.8

Lundin

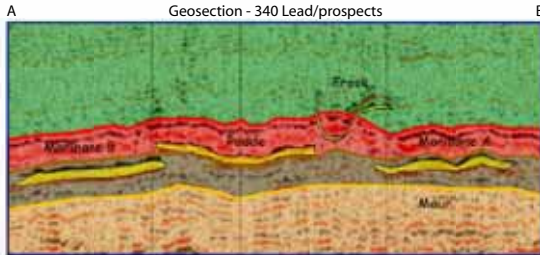
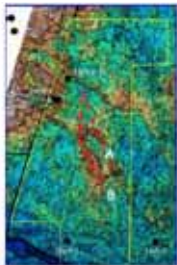


PL340 Prospective Resources

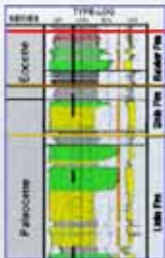


Lundin Interest: 15% (Operator: Marathon)

Heimdal structure



Top Balder Fm
Top Sele Fm
Top Lista Fm



Top Balder Fm

Injectites (?)

Top Seler Fm

Heimdal Fm sand

Top Lista Fm

Heimdal Fm sand

→ Frosk and Padde

→ Marihone (A+B)

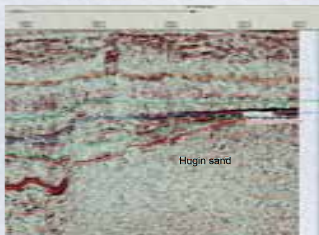
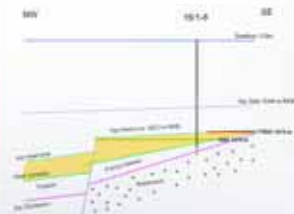
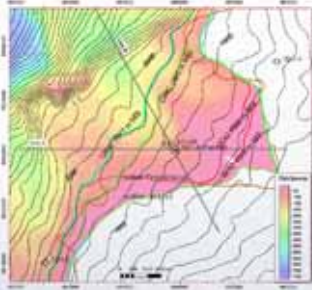
→ Maur

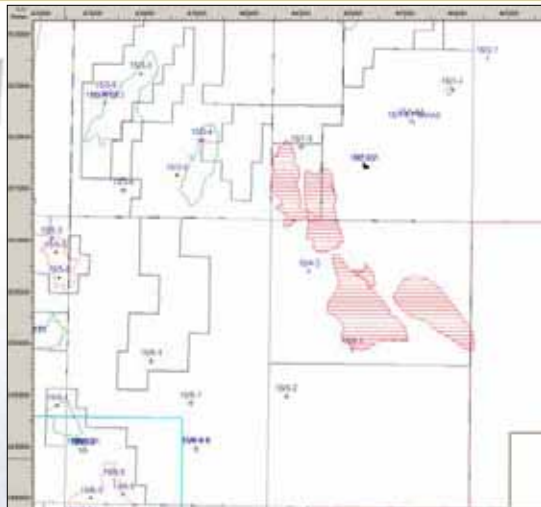
Total prospective resources: 90 MMboe

➤ Lundin Petroleum 50% - Operator

➤ Spud date: First half 2007

➤ Prospective resource
(net Lundin Petroleum)
125 MMboe





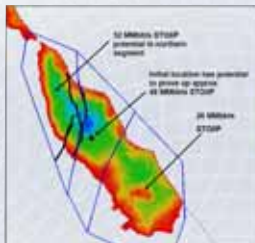
- The licence has leads that can be developed into prospects



Prospect Orange - PL335



- PL335, Blocks 7/4 (south), 7/7 & 7/10 Partnership
 - BG 52% (Op)
 - Lundin Petroleum 18%
 - Talisman 18%
 - RWE 12%
-
- Prospective resources 44 MMboe (Net Lundin Petroleum 7.9)
 - Mærsk Giant is secured for drilling the exploration well in May/June 2007

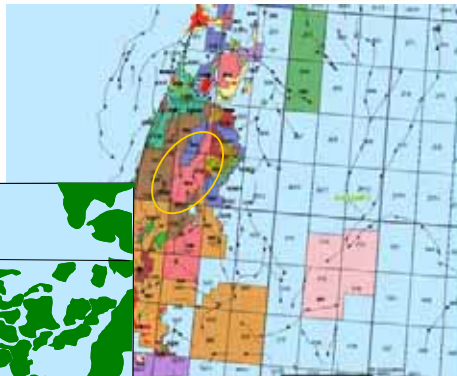
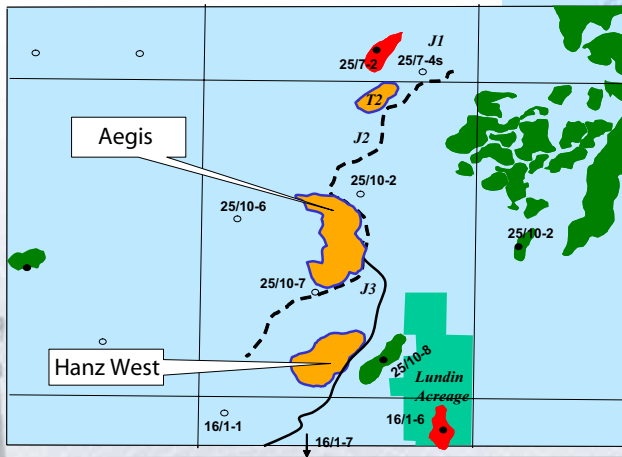


Revised volumetrics - Deterministic Oil Case

STORP	
Total	126 MMbbbls
MEV	~50 MMbbbls



- Lundin Petroleum interest: 60% and operator
- The partner Endeavour can swap a Bredford Dolphin slot in Autumn 2007



- **Two year contract, with one year option from 1Q 2009**
Lundin Petroleum share is 50%
Lundin Petroleum: Use external resources for drilling organisation
Rig type: MD-602, 1800', 15K and winterized
- **Rig plans in progress**
- **Mærsk Giant to be used on PL 148**
Mærsk Guardian from BG to be used on PL 006c (swap)



Major North Sea Exploration Activity - 2007



Norway Licence	Interest	Operator	2007 Drilling
▶ PL103 (Jotun Unit)	7%	Exxon/Mobil	
▶ PL103B	70%	Lundin	
▶ PL148	50%	Lundin	
▶ PL 006c (SE Tor discovery)	100%	Lundin	
▶ PL167 & 167b	20%	Statoil	
▶ PL292	40%	BG	1 Well
▶ PL203	15%	Marathon	
▶ PL 088bs	15%	Marathon	
▶ PL 036c	15%	Marathon	
▶ PL150 (Volund)	35%	Marathon	
▶ PL304	60%	Lundin	
▶ PL335	18%	BG	1 Well
▶ PL338	100%	Lundin	1 Well
▶ PL340	15%	Marathon	
▶ PL359	70%	Lundin	
▶ PL363	60%	Lundin	
▶ Block 24/6a	50%	Total	

UK Licence	Interest	Operator	2007 Drilling
▶ Heather P242	100%	Lundin	
▶ Broom P242/P902	55%	Lundin	
▶ Thistle	99%	Lundin	
▶ Deveron	99%	Lundin	
▶ Solan/Strathsmore P164	100%	Lundin	
▶ P0090 Block 9/10b	85%	Lundin	
▶ Block 9/14c & 15c	37.5%	Conoco	
▶ P0090 Block 9/15a	33.3%	Mobil	
▶ P1275 Block 3/1b	100%	Lundin	
▶ P1384 Block 211/28b	60%	Lundin	
▶ P1301 Block 12/17b	30%	Lundin	1 Well
▶ P1176 Block 20/15b & 21/11c	25%	Endeavour	
▶ P1129 Block 41/10a, 41/5, 42/2a & 42/7	25%	Lundin	1 Well
▶ P1125 Block 30/(22a,23a,27a,29a,28)	25%	Lundin	
▶ P1107 & P1109 Block 21/(8,14,15)	40%	Lundin	1 Well
▶ P1399 Block 12/(26b,27), 17/15b, 18/(1,2a)	15%	Endeavour	1 Well
▶ P1397 Block 12/23a	15%	Endeavour	
▶ P1089 & P1295 Block 14/(28a,29b,23b)	10%	Oil Exco	1 Well

