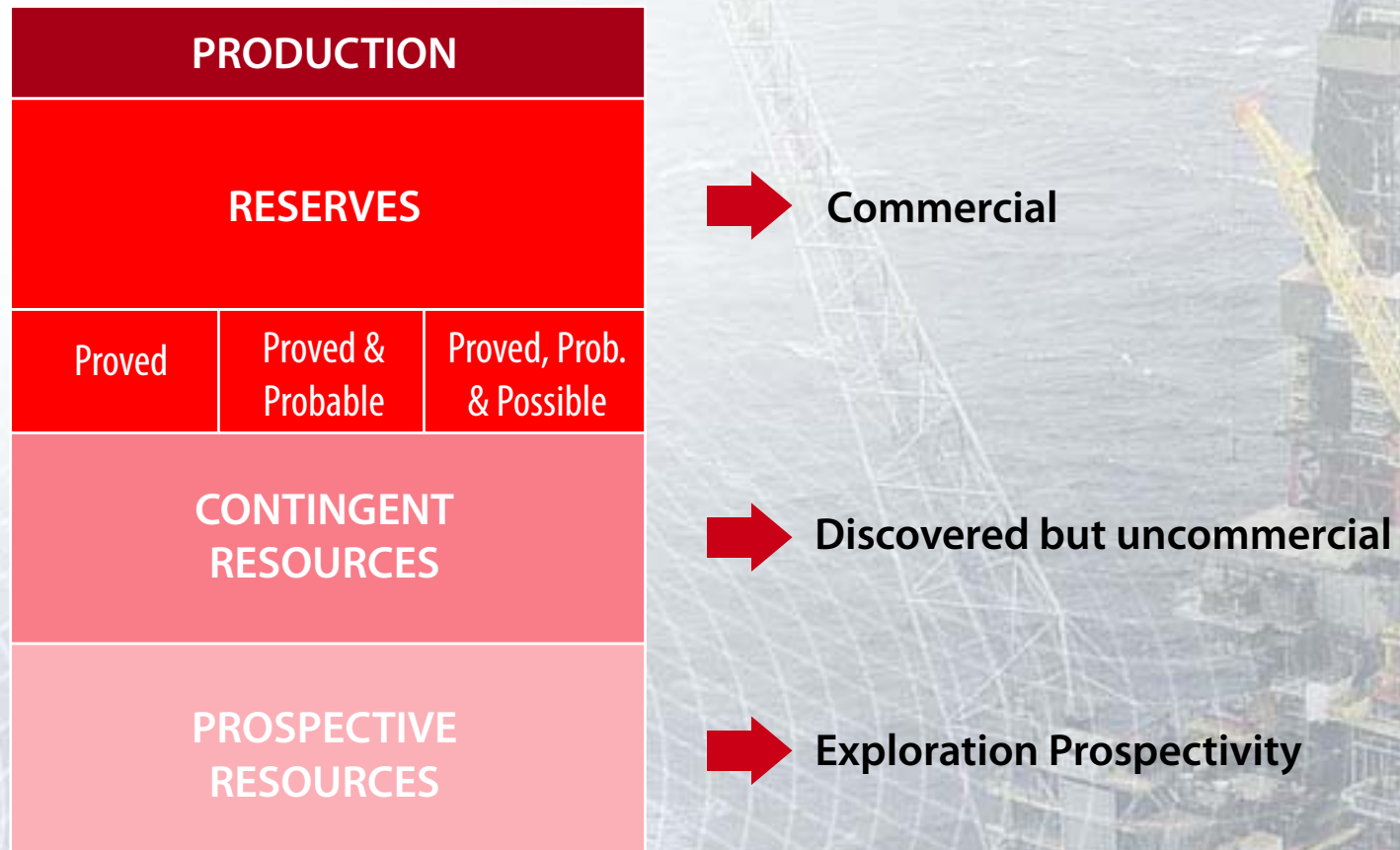


# *Contingent Resources*



## Society of Petroleum Engineers Classification



**Internal estimate 131.5 mmboe net Lundin**

## Norway, 48.8

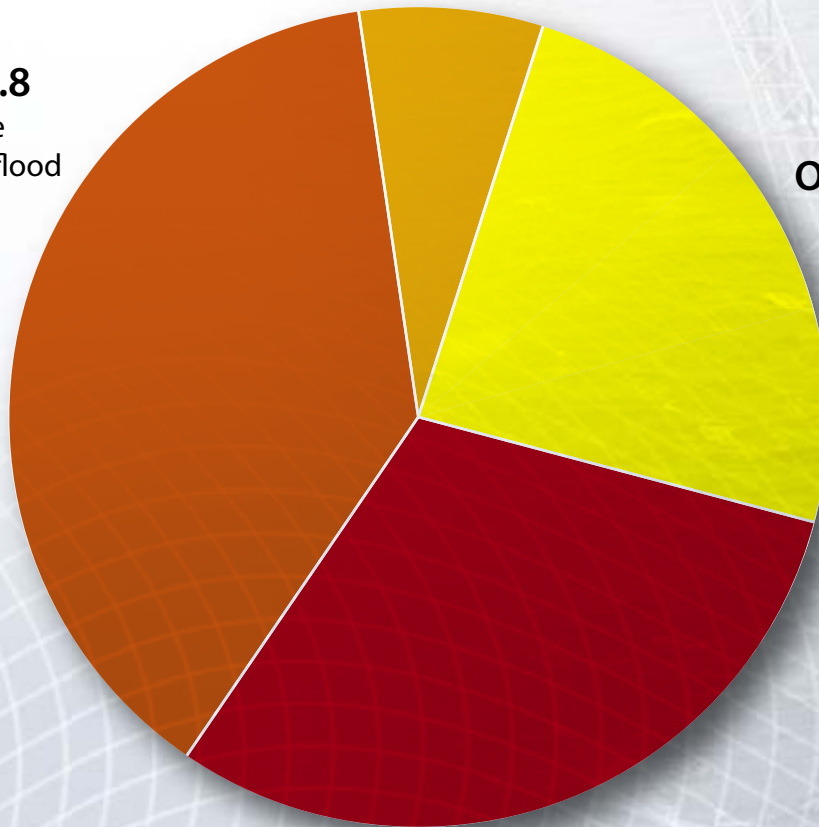
- Alvheim upside
- Hamsun waterflood
- PL292
- PL148
- PL006c
- PL340
- PL167

## France Paris Basin, 9.8

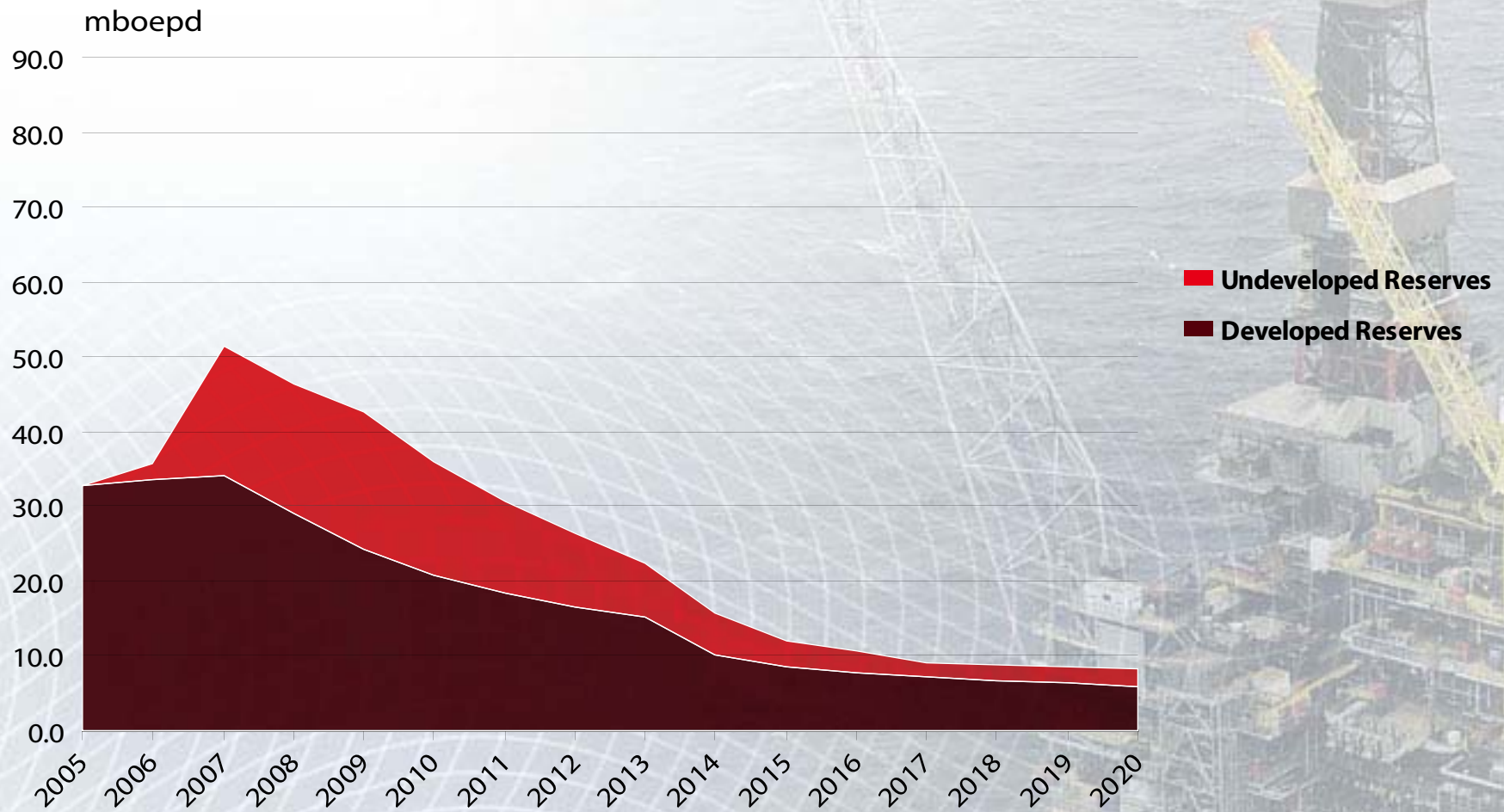
## Other, 32.3

## United Kingdom, 40.4

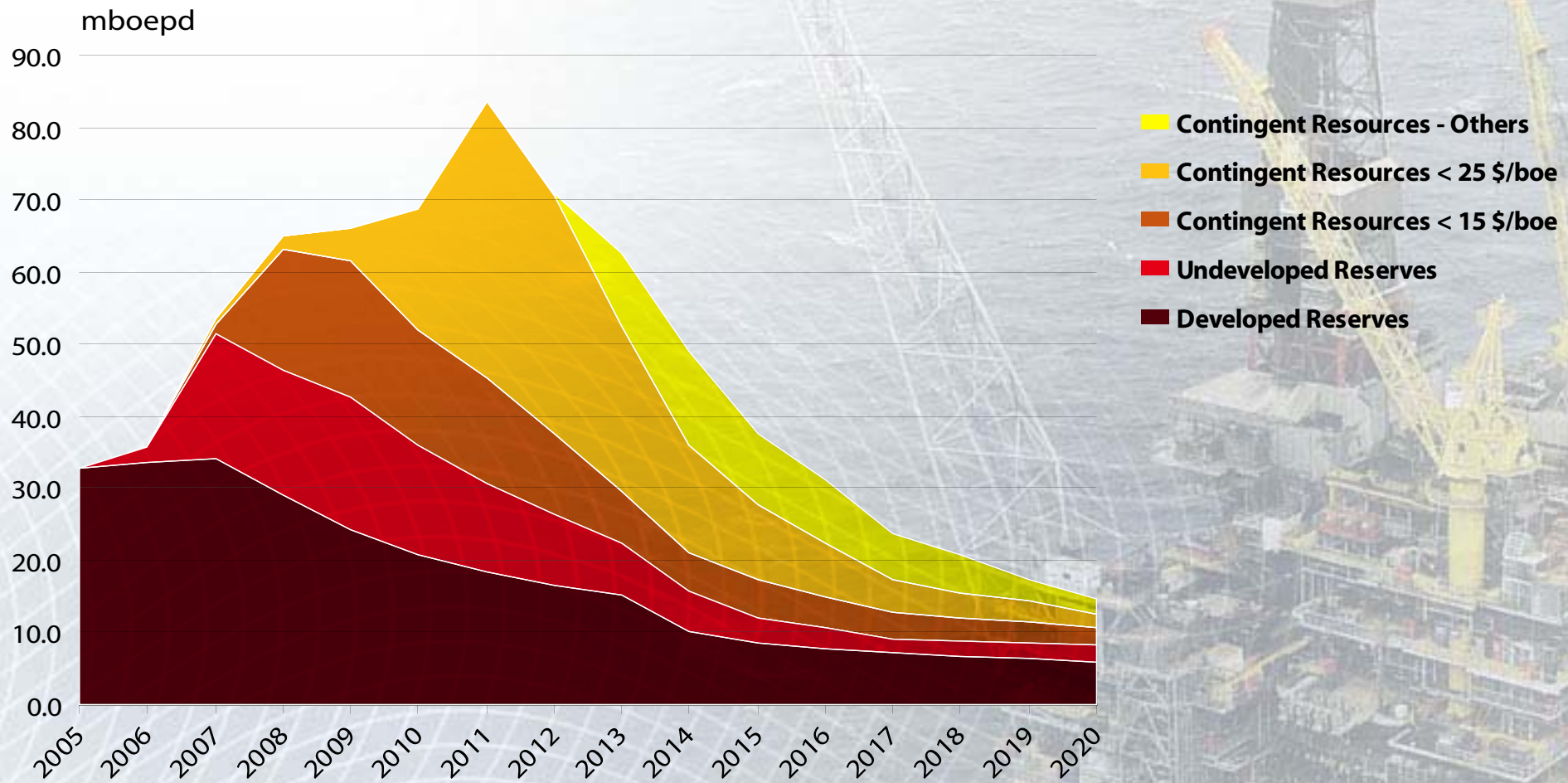
- Heather improved recovery & Triassic upside
- Thistle infill drilling
- SW Heather
- Solan



# Production Forecast - Contingent Resources



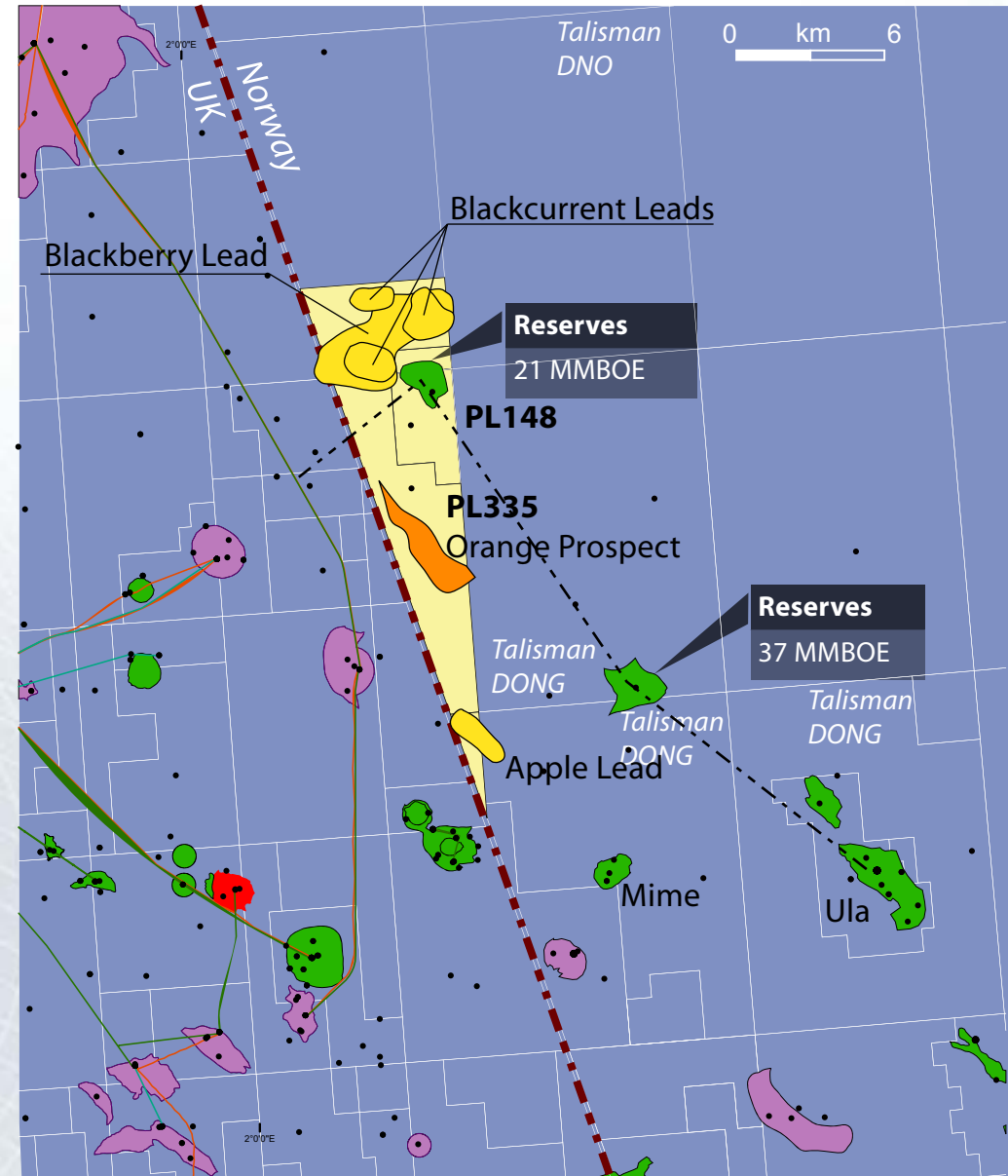
# Production Forecast - Contingent Resources



- **Discovered Hydrocarbons**
- **Not in the 146.1 MMboe reserves**
- **Not currently regarded commercial because:**
  - ➔ Additional appraisal required
  - ➔ Maturation technical work required
  - ➔ Additional seismic required
  - ➔ Pilot required

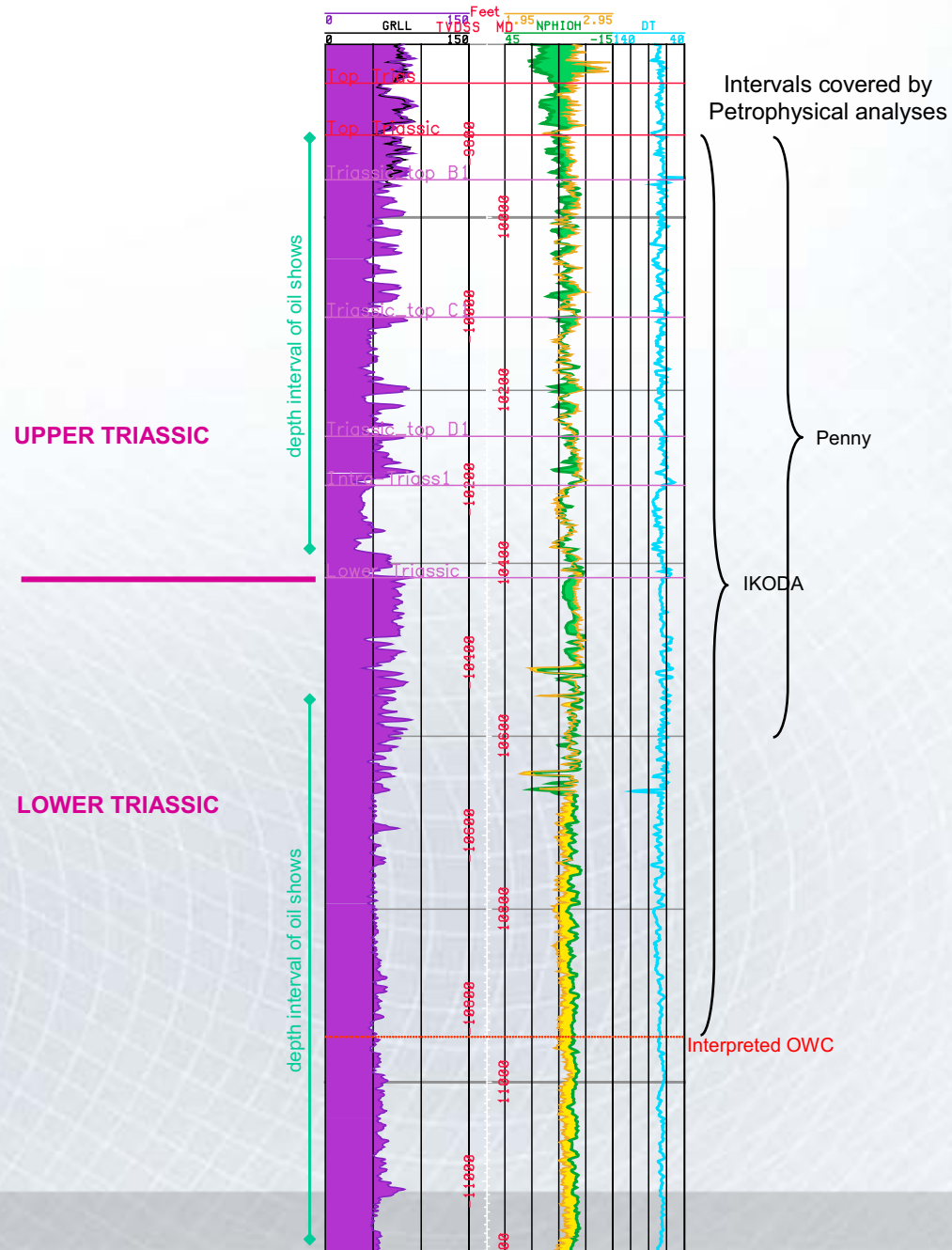
## NORWAY - PL148

- Oil discovery
- 21 MMstb recoverable volume
- Awaiting appraisal to firm up development
- Lundin Operator (50%)
- In principle well agreed with partner (Paladin/Talisman)
- Tag on to Talisman drilling sequence in 2007



## UK - Heather Triassic

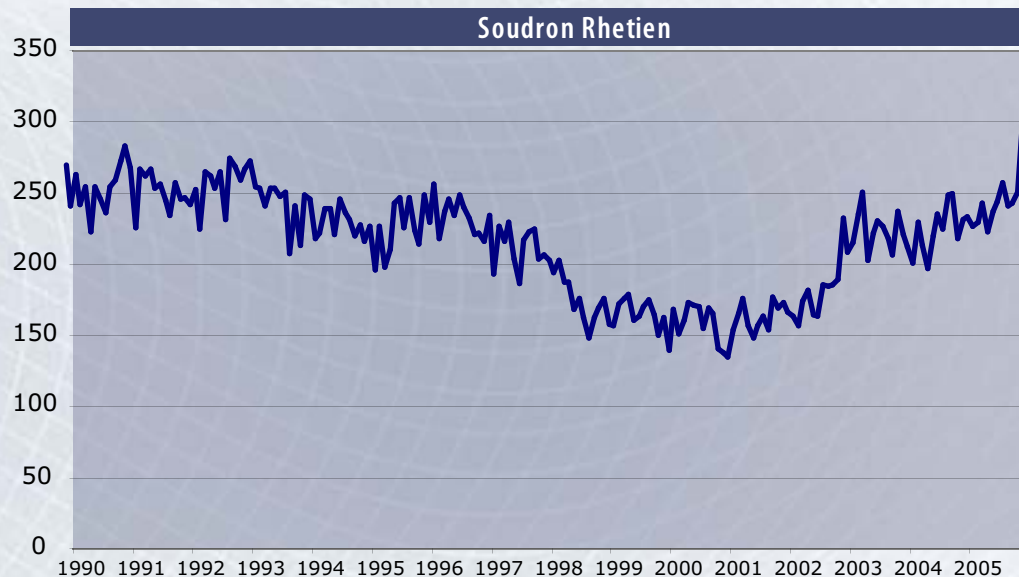
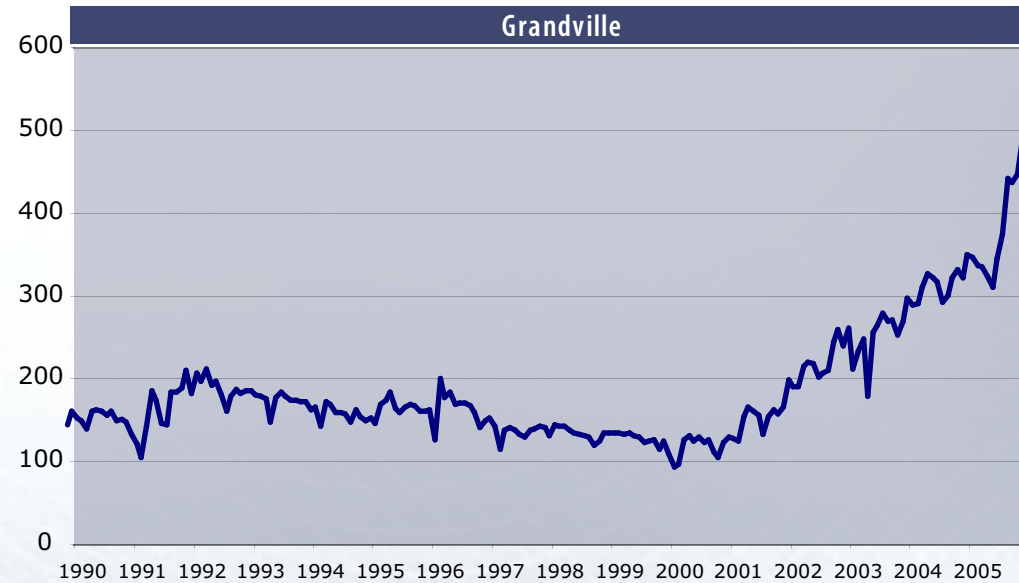
- Underlying Heather Brent Sequence
- 8.3 MMstb recoverable volume  
(assumes 5% RF)
- Poor productivity
- Drill well in 2006 to prove improved productivity





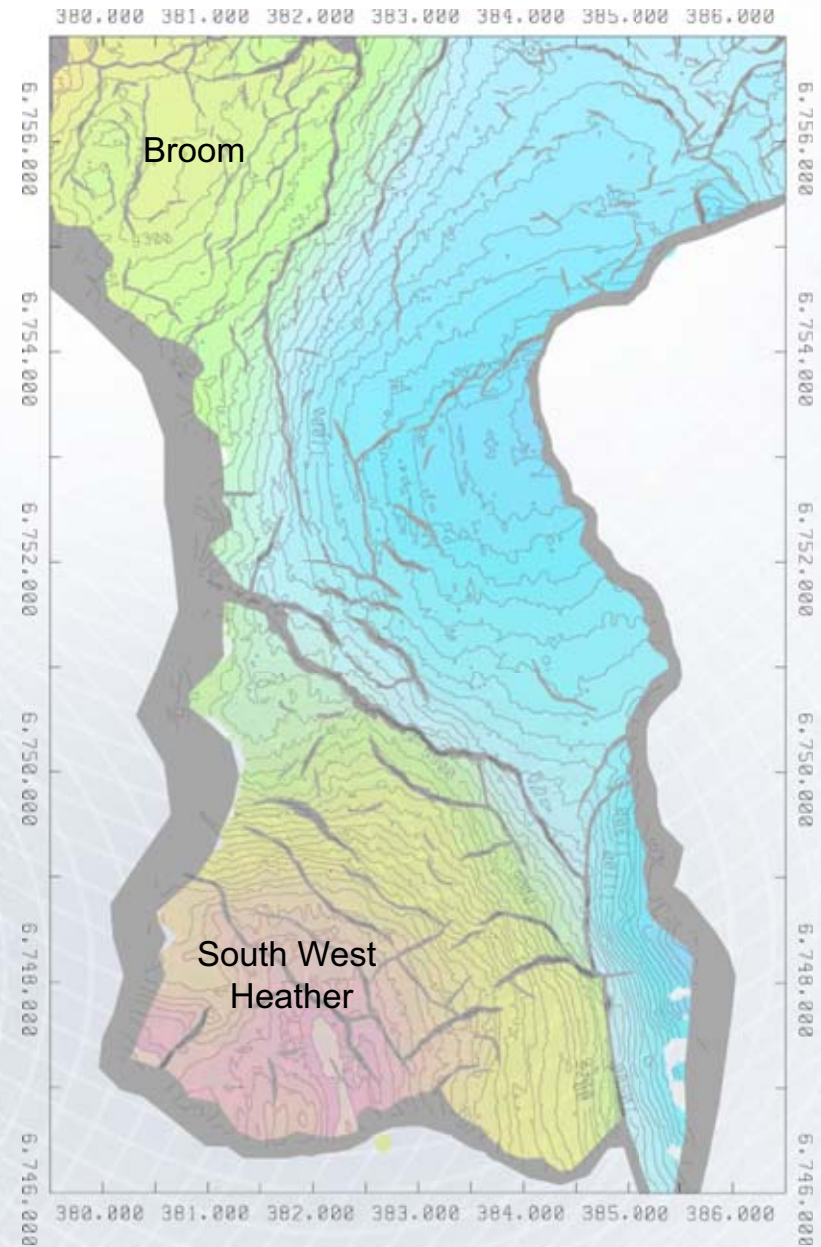
## FRANCE - Villeperdue

- ➔ North-East Underdeveloped
- ➔ Partially depleted reservoir, needs infill and water injection
- ➔ Needs underbalanced drilling to increase productivity
- ➔ 4 well drilling campaign scheduled and budgeted Q4 2006
- ➔ 1.5 MMboe recoverable volume
- ➔ 4 MMBoe upside



## UK - SW Heather

- ➔ Oil discovery
- ➔ Complex structure
- ➔ Poor seismic definition
- ➔ 3D seismic in Q2 2006
- ➔ 12 MMboe recoverable volume



**TUNISIA - Birsa**

- Oil Discovery, appraised with 5 wells
- Complex Structure
- Complex geology
- Carried out 2005 development study 2006
- 12 MMboe recoverable volume

